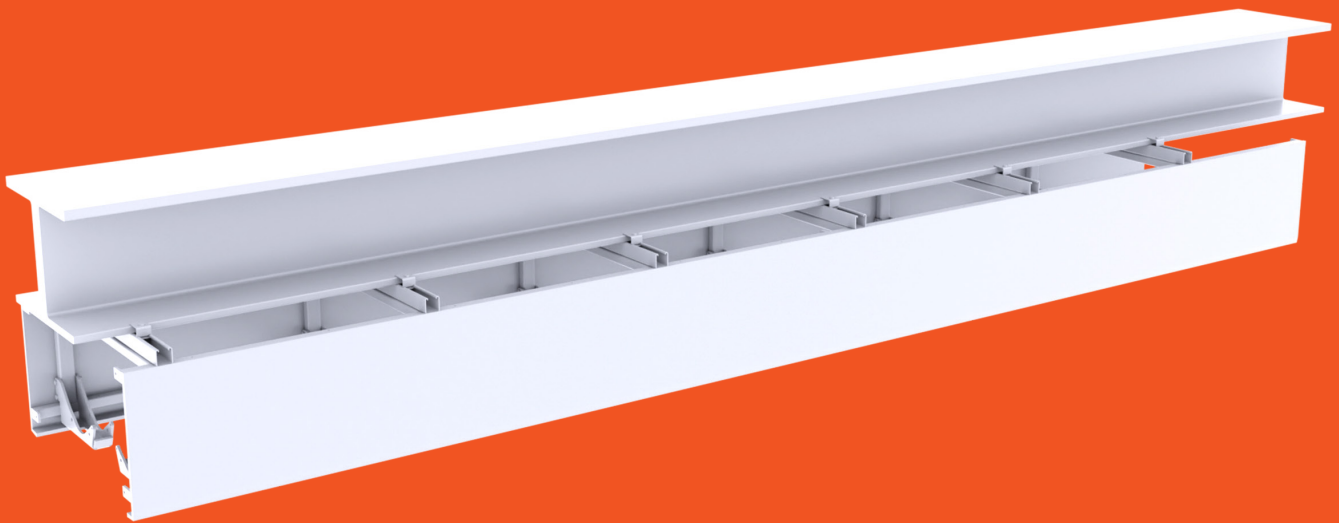
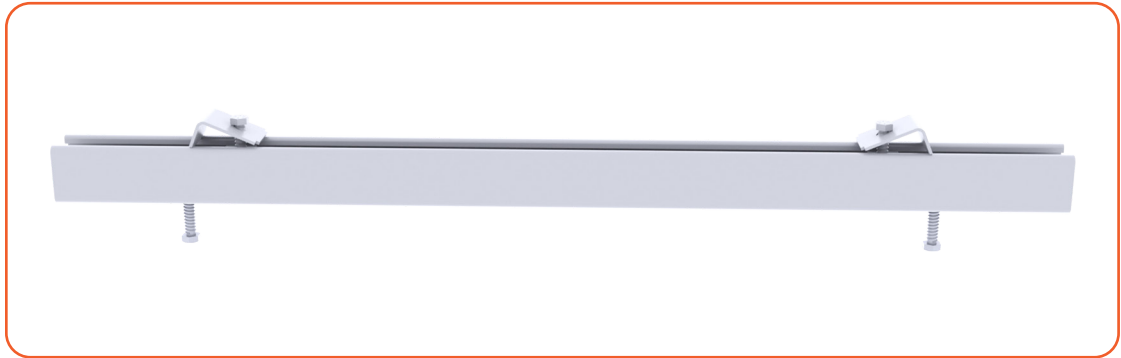


Unistrut Manual Direct to I-Beam

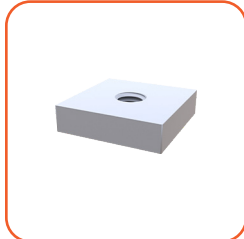


Tudelu®

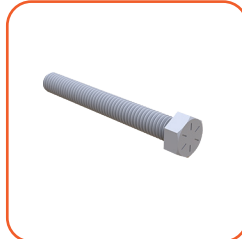
Assembled unistrut



Breakdown of unistrut components

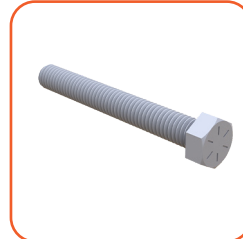


Square Strut Channel
Nut, 3/8"-16 Thread Size



Zinc Yellow-Chromate
Plated Hex Head Screw

Size:
1/2"-13 Thread , 2" Long



Zinc Yellow-Chromate
Plated Hex Head Screw

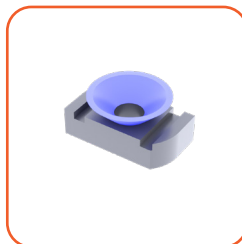
Size:
3/8"-16 Thread , 3" Long



Beam Clamp



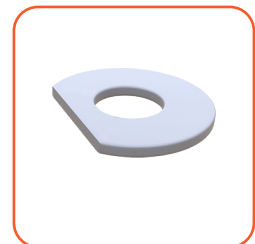
Strut Channel



Nylon Strut
Cone Nut



Zinc-Plated Steel
Split Lock Washer

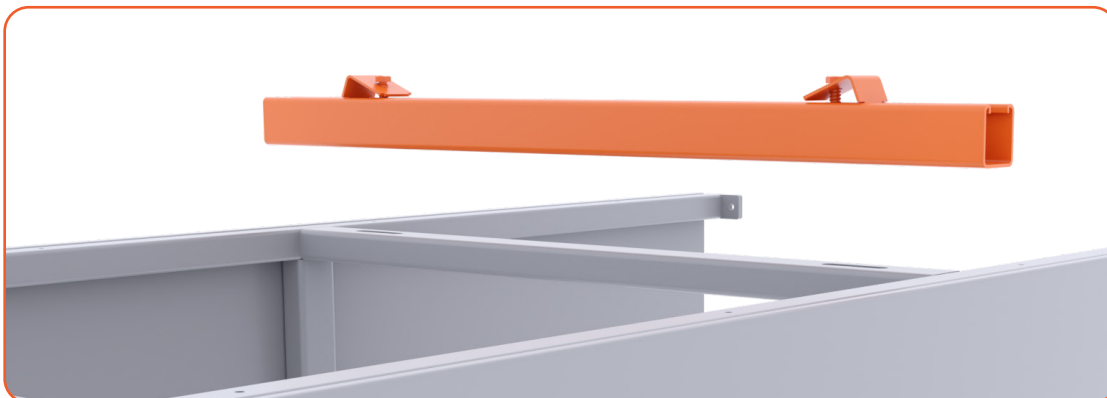


Oversized Clipped
Washer

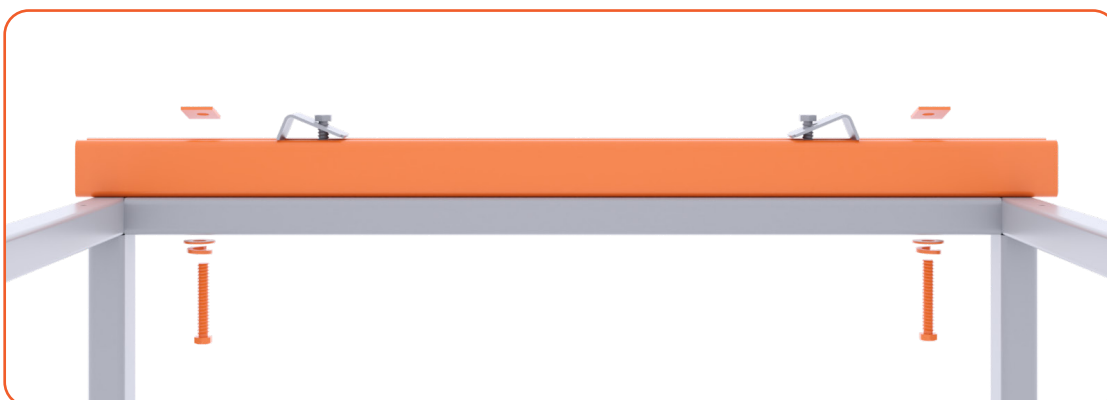
THESE DRAWINGS ARE FOR REFERENCE PURPOSES ONLY.
STRUCTURAL ENGINEER'S APPROVAL NEEDED

INSTALLING UNISTRUT TO TUDELU FRAME

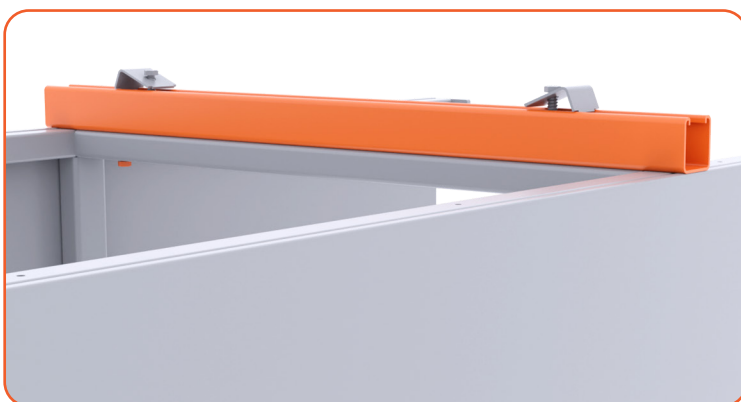
1. Place unistrut on Tudelu housing frame



2. Insert screws that come attached to Tudelu frame through the unistrut and tighten screws



End result



Side view



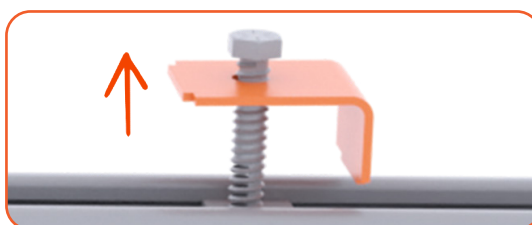
THESE DRAWINGS ARE FOR REFERENCE PURPOSES ONLY.
STRUCTURAL ENGINEER'S APPROVAL NEEDED

INSTALLING UNISTRUT TO I-BEAM

1. Release screws to open clamps



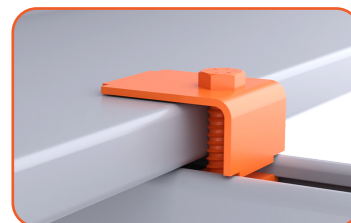
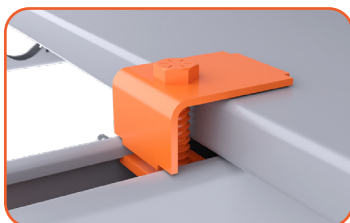
2. Raise the clamp



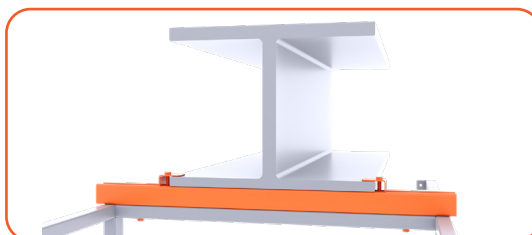
3. Adjust clamp to fit the I-Beam



4. Tighten screws in clamps and make sure both sides are fully secure



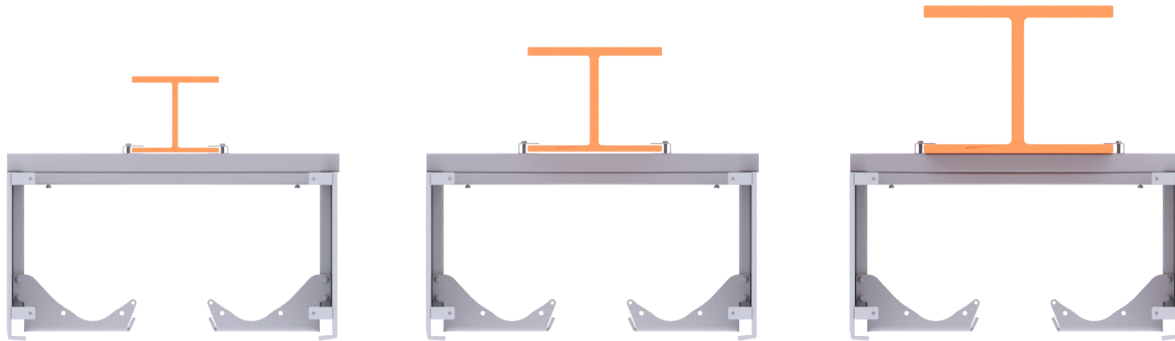
End result



THESE DRAWINGS ARE FOR REFERENCE PURPOSES ONLY.
STRUCTURAL ENGINEER'S APPROVAL NEEDED

OFFSETTING THE I-BEAM

The I-Beam can be offset up to 6"



I-Beam should not be smaller than 5"

- ADD BRACING IF NEEDED FOR ADDITIONAL RIGIDITY
- DESIGN LOADS- TUDELU SYSTEM WEIGHS 100 lbs/LF.
- LATERAL PRESSURE ON CURTAIN- 5 lbs/sq ft\

THESE DRAWINGS ARE FOR REFERENCE PURPOSES ONLY.
STRUCTURAL ENGINEER'S APPROVAL NEEDED