



Get An
Estimate



Tudelü®

www.Tudelu.com

Follow Us|





Change Spaces, Not Places

Discover **Tudelü's** innovative lineup of sleek, retractable partition walls, elegant pergolas, and versatile sunshades and canopies. Our partition walls offer premium, noise-reducing, and seamless flexibility for dynamic indoor spaces. Outside, our architecturally refined pergolas provide customizable, durable, and stylish outdoor living solutions, while our sunshades and canopies deliver smart, functional, and modern protection—Proving why.... **From Hello to Goodbye; Tudelü Makes The Statement**

Table of Contents

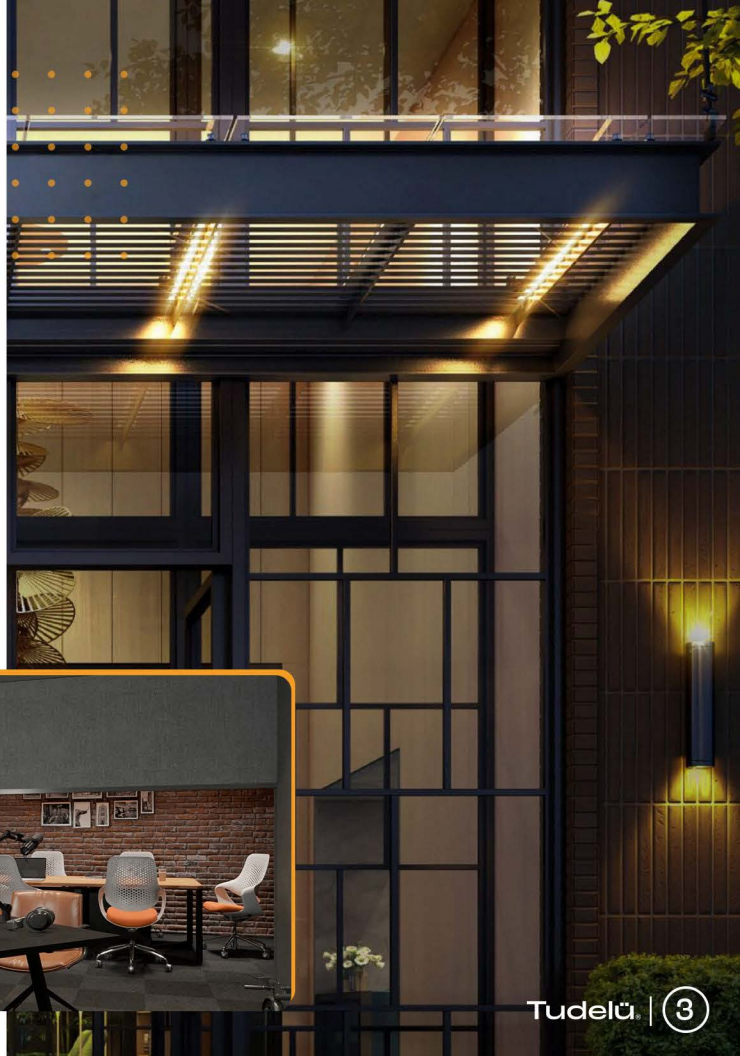
Company Introduction | 4

Partition Wall Systems | 6

Canopies | 8

Pergolas | 10

Website Exclusive Features | 12



Our Mission

This isn't just innovation. It's architecture with soul.

Tudelü empowers you to shape space on your terms, spaces that move with you, adapt to you, and reflect exactly who you are. Our walls aren't barriers—they're dynamic tools for creativity, privacy, and purpose. Our canopies do more than provide shelter—they create moments, moods, and meaning.

Every **Tudelü** system begins with a belief: great spaces don't just contain life—they elevate it. Whether you're a homeowner seeking calm, a designer crafting immersive experiences, or a business leader optimizing performance, **Tudelü** helps you build smarter, live better, and feel more. **From Hello to Goodbye; Tudelü Makes The Statement.** With patented tech, global integration, and soundproofing that rivals top recording studios, form meets function in every detail without compromise.

The future doesn't follow rules. It follows you. And **Tudelü** is here to make sure your space keeps up.

Why Tudelü

At **Tudelü**, we're more than just manufacturers we're makers, problem-solvers, and partners in design. Our team of designers, engineers, and production specialists collaborates from start to finish, ensuring every product is crafted with intention, precision, and purpose. We don't just assemble systems, we understand the minds behind the concept and the hands behind the build.

With over a decade of award-winning, patent-holding experience, **Tudelü** has worked with thousands of clients across North America to reimagine how space can serve both function and feeling. Our systems are built on premium technology, but what sets us apart is the personal attention each project receives. Every detail matters because every space is different. From large-scale commercial builds to unique residential projects, we bring creativity, consistency, and craftsmanship to every solution. Our commitment is simple: to meet high standards, exceed expectations, and deliver architectural innovation with a human touch.



Meet Tudelü Partitions

an industry-exclusive, remote-controlled, fully electric solution that instantly transforms spaces with a sleek, retractable, STC-rated sound-blocking wall.

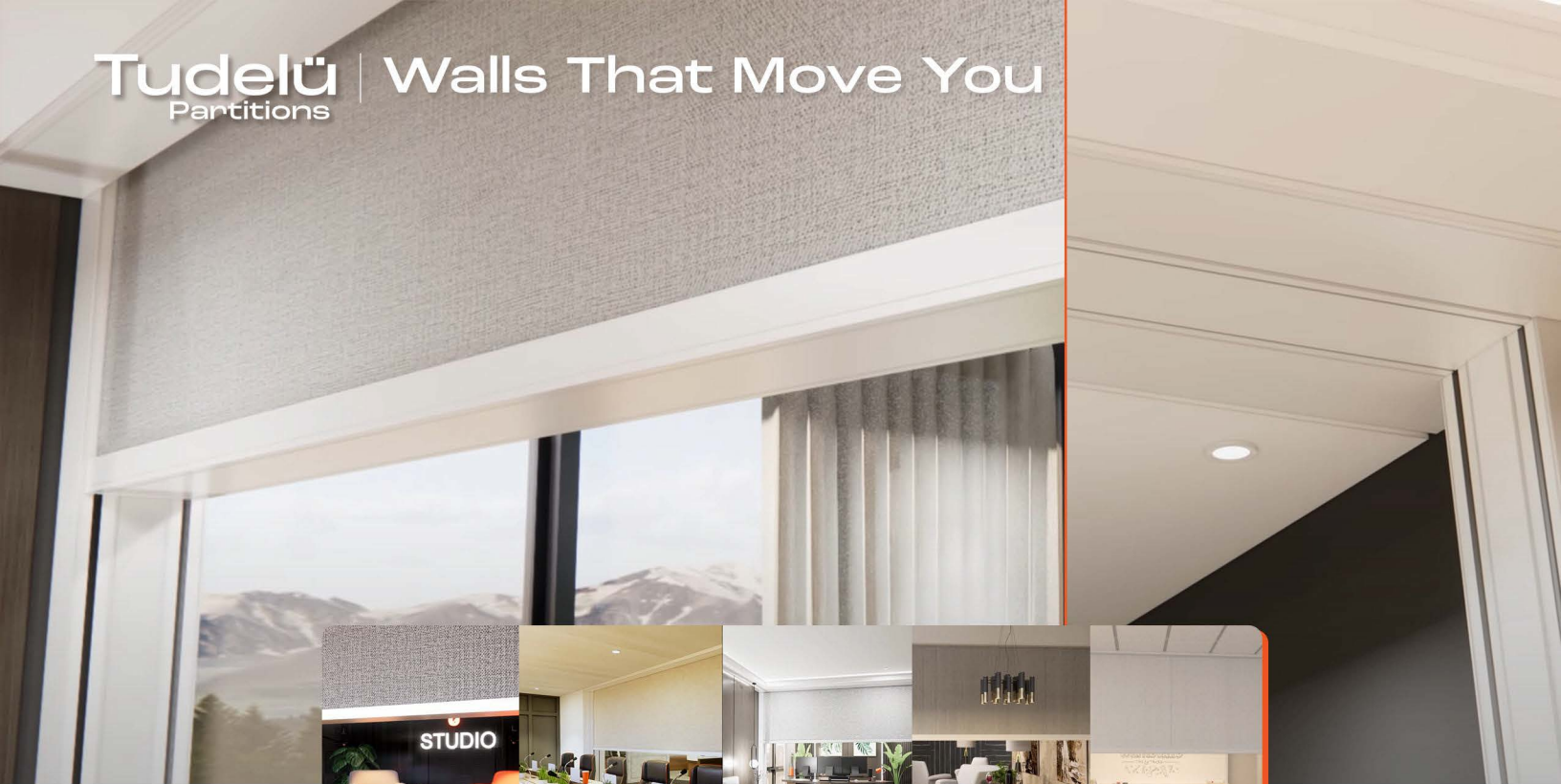
- **True 48 STC** | Solid wall meaning no gaps for sound to leak, unlike multi-segment panel wall designs.
- **Massive Scale** | Available up to 12 ft high and 60 ft wide for major coverage.
 - **Silent + Secure Seal** | Dual-connected bottom bar guarantees a smooth, quiet close—no gaps, no leaks.
 - **One-Touch Control** | Activate with a push-button or fully integrate with smart home systems.
 - **Compact Housing** | Just 12" high x 26" wide—engineered to fit discreetly into your space.
 - **Fully Disappearing Design** | Low-profile bottom bar retracts seamlessly into housing when not in use.



Ideal Environments: Education • Office • Kitchens • Hospitality • Dining • Home • Concerts • Military Healthcare • Remote Work • House of Worship

Tudelü | Walls That Move You

Partitions



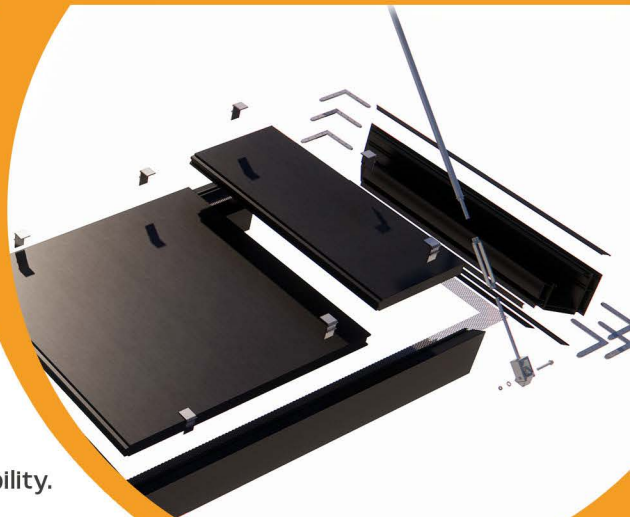
Meet Tudelü Canopies

customizable, modular designed, outdoor structures engineered to provide flexible shade and shelter with sleek, modern design and durable materials.

- **Modular Frame Sizes** | 6" or 8" extruded aluminum frames, customizable to fit any aesthetic.
- **Three Slot Configuration** | Choose Top, Bottom, or Back slot options to match structural and visual needs.
- **Waterproof Roofing Panels** | Engineered roof pans keep interiors dry and direct water to your chosen drainage system.
- **Flexible Drainage Options** | Compatible with scuppers, downspouts, or tie-ins to the building's drainage
- **Integrated Lighting** | Optional LED tap strips or downlights for increased safety and nighttime visibility.

- **Louver Enhancements** | Add airflow & sun-blocking functionality with durable aluminum louvers & lighting

- **Heavy-Duty Support** | Structural options include hanger rods, pre-installed or built-in cantilevers, and cable combinations.



Ideal Environments: Education • Hospitality • Residential • Commercial • Military • Healthcare
House of Worship

Tudelü | Shades That Brighten You Canopies



Meet Tudelü Pergolas

customizable, architecturally sleek outdoor structures designed to provide flexible shade and shelter, with modular components that adapt to a variety of residential and commercial environments.

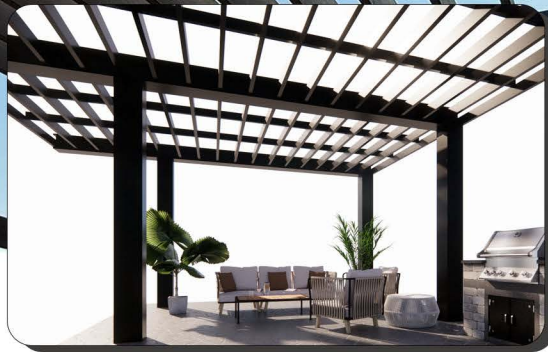
- **Customizable Frame Profiles** | 6" or 8" heavy-duty extruded aluminum frames.
- **Slot Options** | Fully configurable: Top Slot, Bottom Slot, or Back Slot for tailored design flow
 - **Roofing Flexibility** | Single or double watertight roof pans efficiently channel water to integrated drainage.
 - **Smart Drainage System** | Scupper, downspout leader, or building-integrated drainage options for durability.
 - **Lighting Integration** | Add down lights or LED tap strips for ambient evening use.
 - **Air & Shade Control** | Optional extruded aluminum louvers with LED louver lighting for airflow and shade control.
 - **Structural Support Options** | Supports include hanger rods, cantilevers, or custom hybrid options for safe load handling.



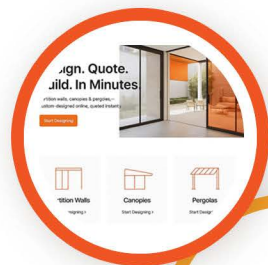
Ideal Environments: Residential • Commercial • Hospitality • Healthcare • House of Worship

Tudelü | Spaces That Free You

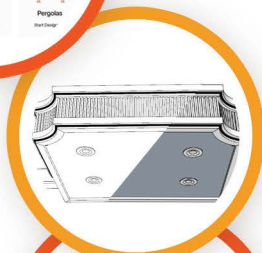
Pergolas



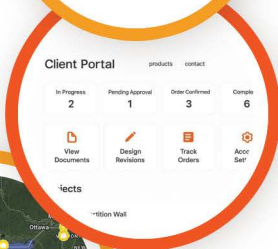
Tudelü Portal Key Features



- **Instant 5-Step Quoting Tool** | Visualize your system and get a quote in seconds with our intuitive design platform.



- **Two-Hour Quotes** | Receive shop drawings and installation pricing within two hours—not weeks.



- **Customer Project Portal** | Access live project updates, Q&A, shop drawings, and delivery timelines—all in one place.



- **Interactive Installation Map** | View real-world Tudelü installs nationwide for inspiration and location-based examples.

From customizable partitions to modular pergolas and sleek canopies—Tudelü empowers design at every scale. Explore tools, drawings, and more.



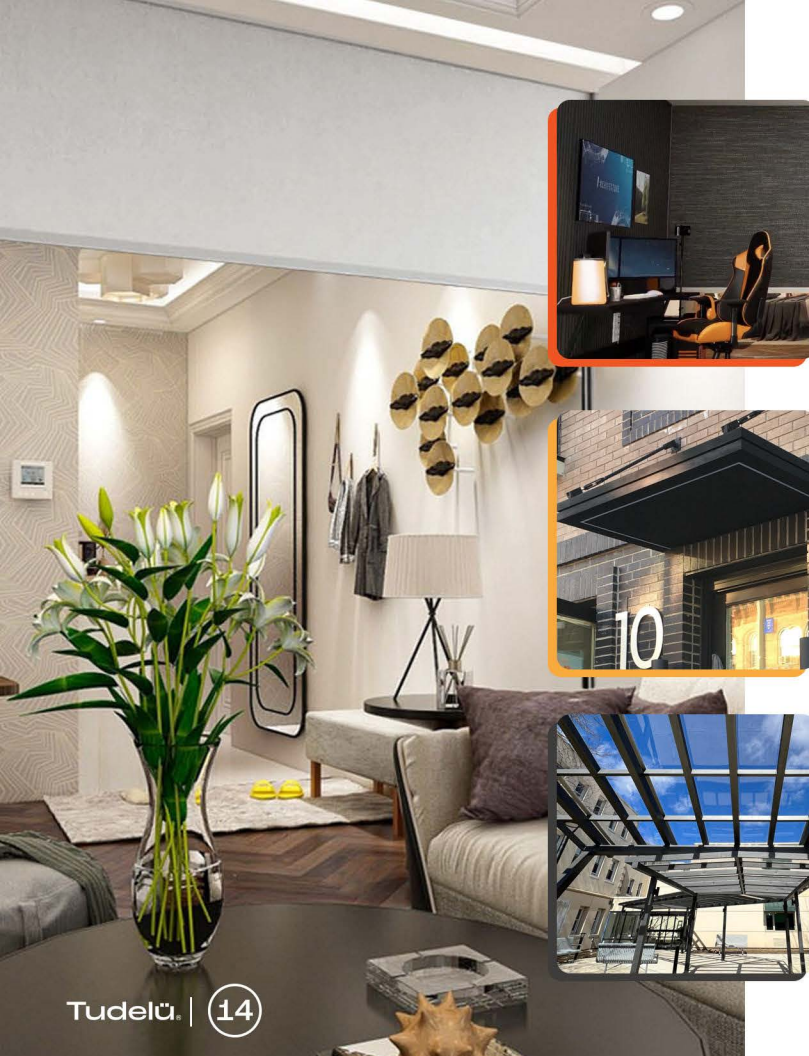
- **Industry Integration** | Direct access to our ARCAT, LEED, and AIA profiles for seamless spec coordination.

- **Architect Hub** | Download CAD, REVIT, brochures, specs, and electrical guides—plus access our 3D designer.

- **AIA Education Center** | Register for approved courses, earn credits, and deepen your knowledge of acoustics and design.

- **Case Study Library** | See how Tudelü systems perform across industries—real stories, real results.

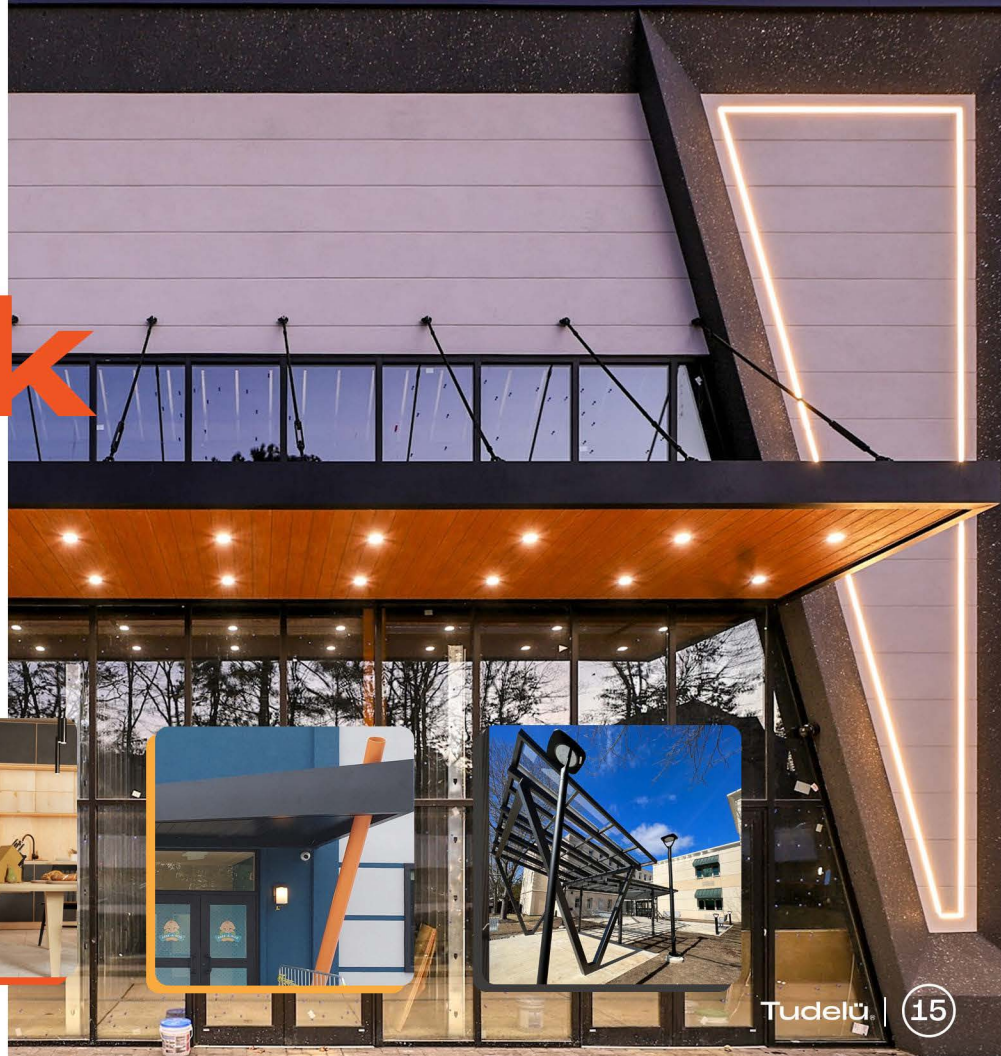




Hello to Goodbye; **Tudelü Makes** **The Statement**

Get your **Tudelü** system delivered in half the time of the competitors and every space your space.

Thank You!





www.Tudelu.com



718.782.7882



100 Industrial Ave
Little Ferry NJ, 07643



sales@tudelu.com

Follow Us|

