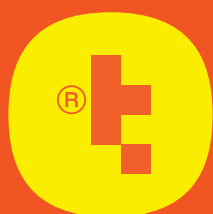


Installation Manual



**SYSTEM:
MUTE**

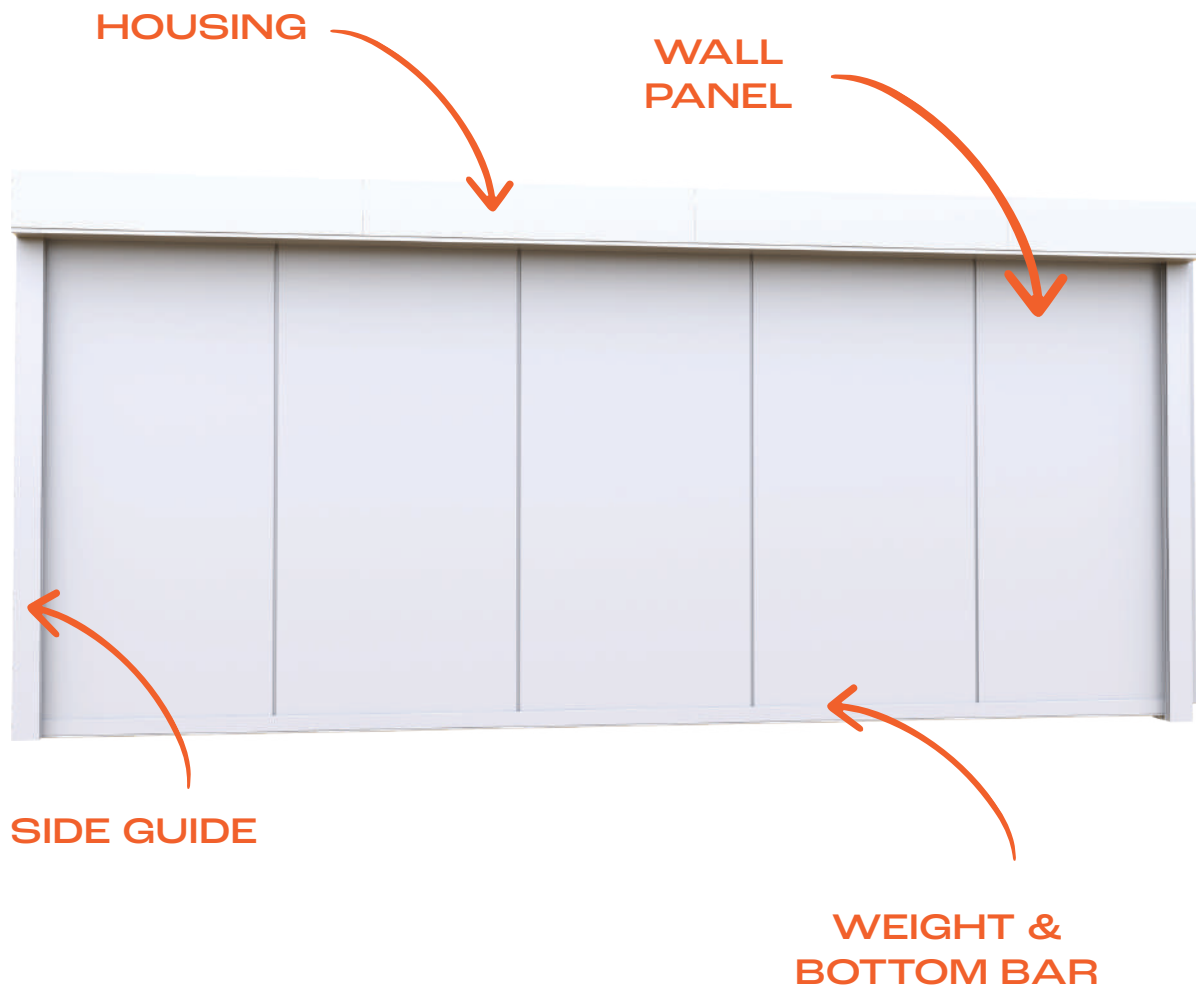


Tudelu®

TABLE OF CONTENTS

MEET THE SYSTEM	3
PRE-INSTALLATION CHECKLIST:	4
- BOXES	5
- TOOLS	6
- ROOM	7
HOUSING INSTALLATION:	
- INSIDE THE BOX:	
- BEGINNING UNIT	9
- MIDDLE UNIT	10
- END UNIT	11
- ASSEMBLY	12
- INSTALLATION	14
- SOUND BOARDS	17
- ROLLERS	18
- MOTOR:	
- INSIDE THE BOX	19
- TUBE:	
- ASSEMBLY	20
- INSTALLATION	22
WALL PANEL UNIT:	
- INSIDE THE BOX	23
- INSTALLATION	24
WEIGHT & BOTTOM BAR UNIT:	
- INSIDE THE BOX	26
- INSTALLATION	27
SIDE GUIDE:	
- INSIDE THE BOX	29
- ASSEMBLY	30
- INSTALLATION	33
UNDER HOUSING COVER:	
- INSIDE THE BOX	35
- INSTALLATION	36
CONTROL BOX:	
- INSTALLATION	38
HEAT STRIP:	
- INSTALLATION	39

MEET THE SYSTEM



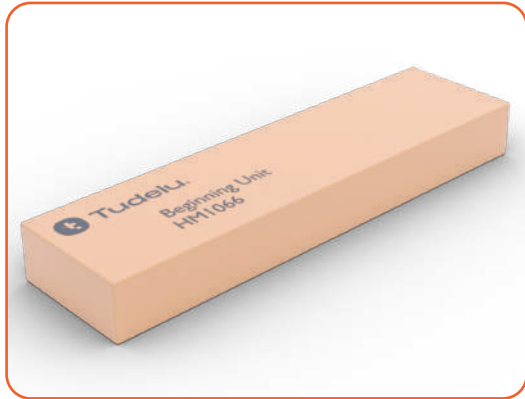
PRE-INSTALLATION CHECKLIST

Before getting started, complete the following checklists to ensure you are set for installation:

1. Boxes checklist
2. Tools checklist
3. Room checklist

CHECKLIST #1 : BOXES

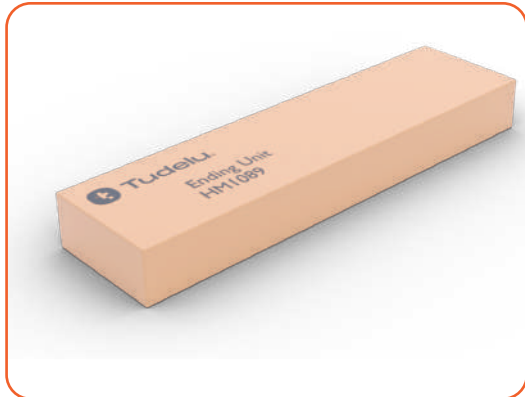
Make sure you received your full order.



Beginning Unit



Middle Unit/s*



Ending Unit



Motor Unit



Wall Panel Units*



Weight and
Bottom Bar Unit



2 Side Guide Units

*amount depends on the length of your specific system

CHECKLIST #2 : TOOLS

These are the tools you'll need to install your system:



Wrenches

Socket / Wrench;
7/16 +
3/8 +
9/16



Philips #2 &
Flat screwdriver
& Angle screwdriver



Drill bits



Tape measure



Utility knife



Stapler



Leveler



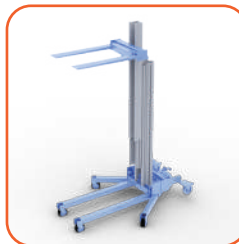
Extension cord



Laser



Saw
or Band Saw
with aluminum blade



Material Lift



Drill



2 ladders and
scaffolding



Plier



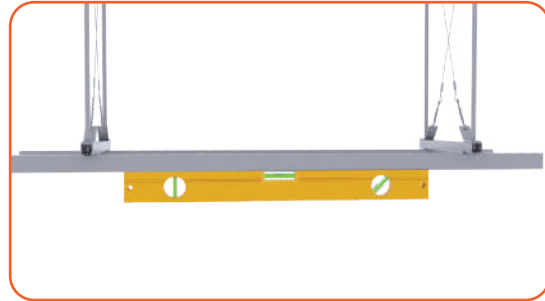
Duct tape



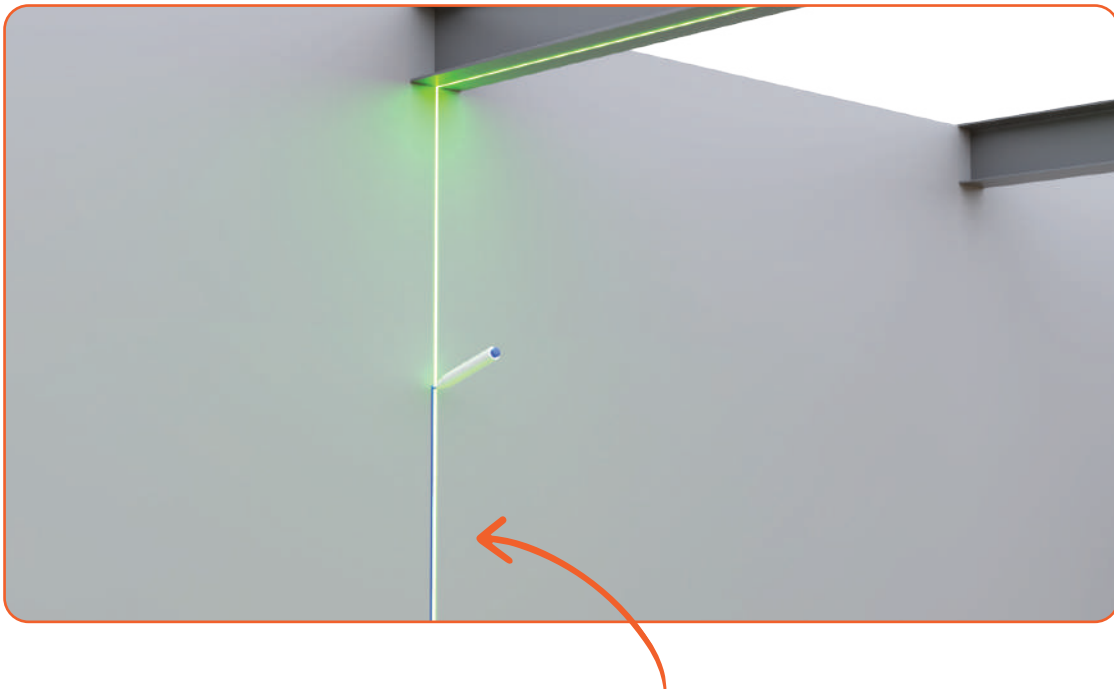
Heat Gun

CHECKLIST #3 : ROOM

- A. Make sure you have power to operate your tools and the system
- B. Ensure the power is in a convenient location
- C. Clear the room for installation
- D. Use the laser to check that the structural support is leveled



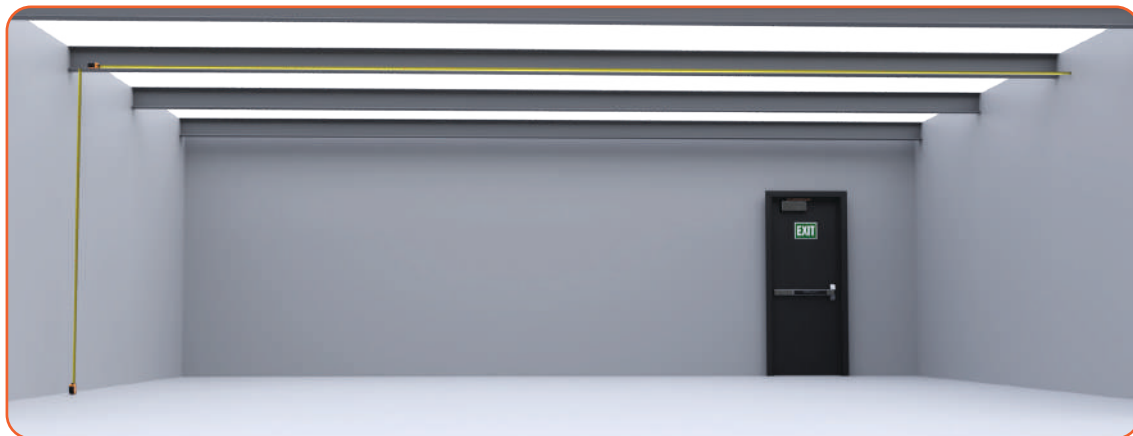
- E. Mark both sides of the wall



this is where the side tracks will go

CHECKLIST #3 : ROOM

F. Verify once more that the system you ordered and the room measurements match



G. Mark 26" on the ceiling
(this is where the system will be installed)

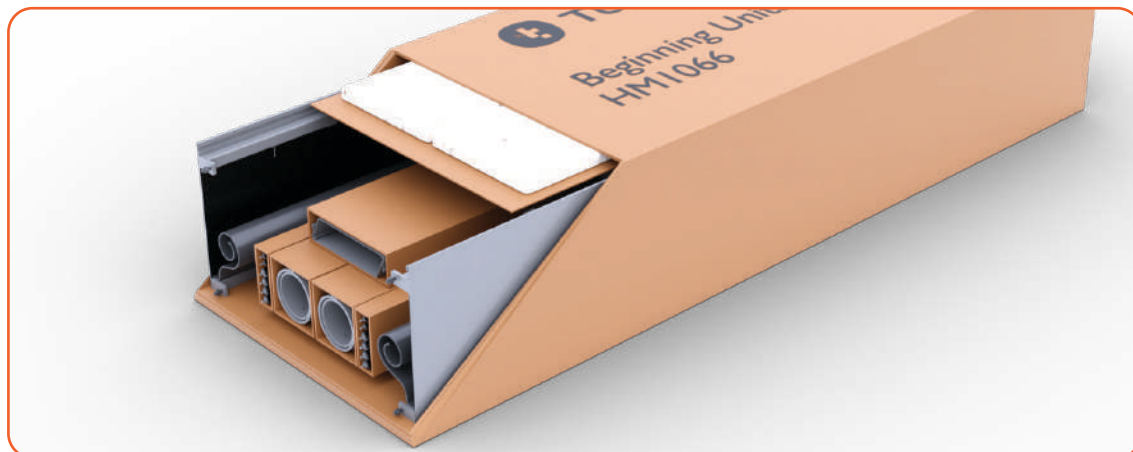


H. If installed on a drop, ensure that each nut and bolt is firmly tightened



HOUSING INSTALLATION : INSIDE THE BOX

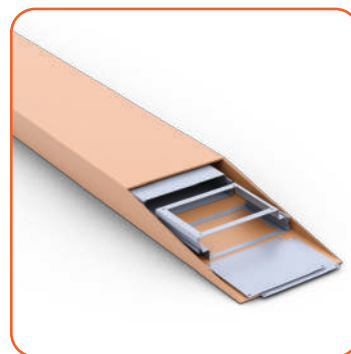
BEGINNING UNIT - HM1066



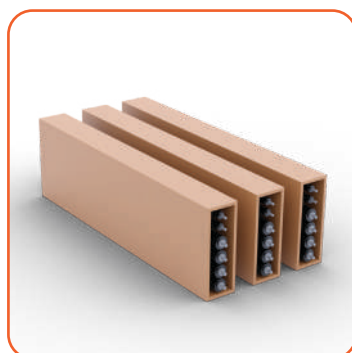
Beginning housing
frame



2 tubes



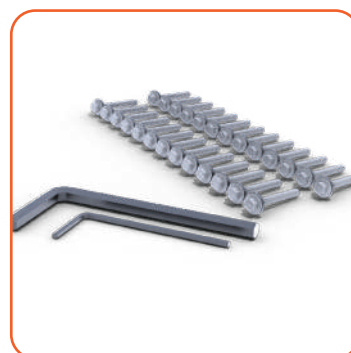
Under-housing covers
and access panels



3 sets of:
4 large rollers
2 small rollers

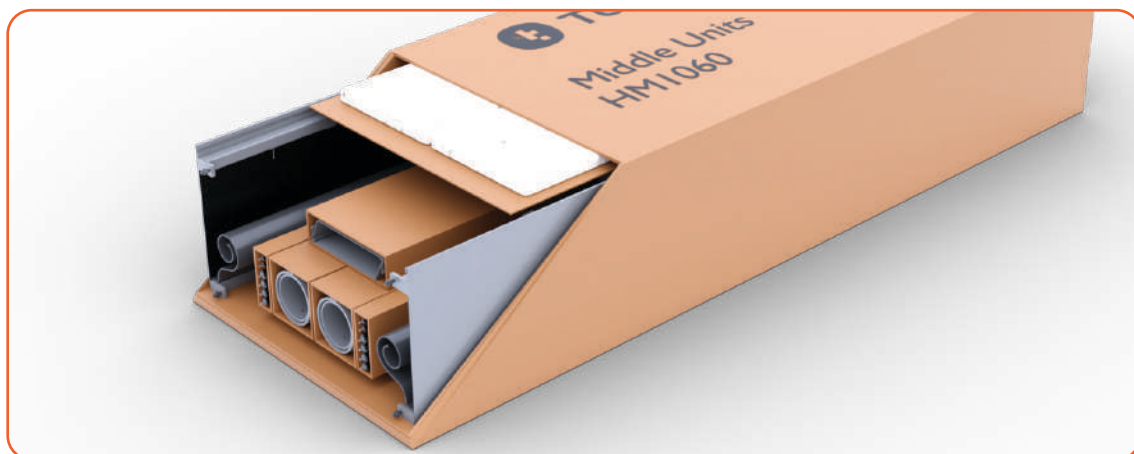


Soundboards



Bolts and tools

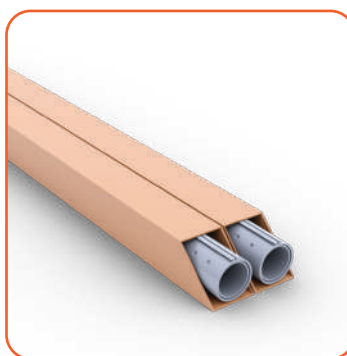
HOUSING INSTALLATION : INSIDE THE BOX

MIDDLE UNIT - HM1060

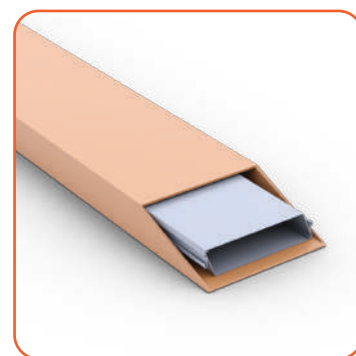
Each Middle Unit box contains:



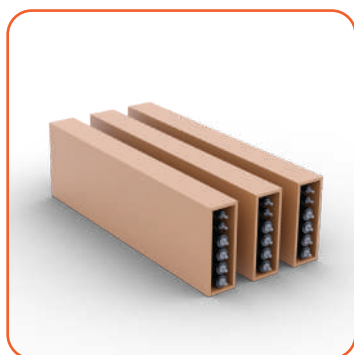
Middle housing frame



2 tubes



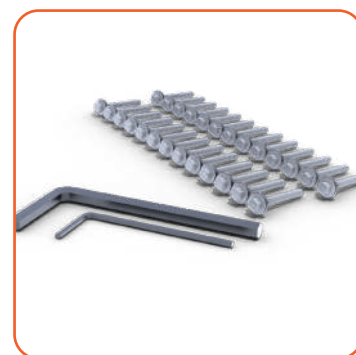
Under-housing covers



3 sets of:
4 large rollers
2 small rollers



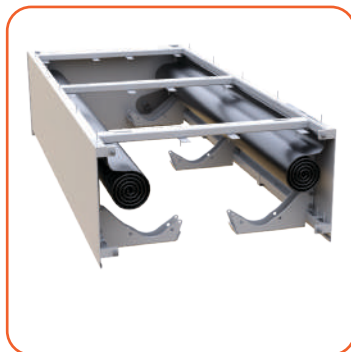
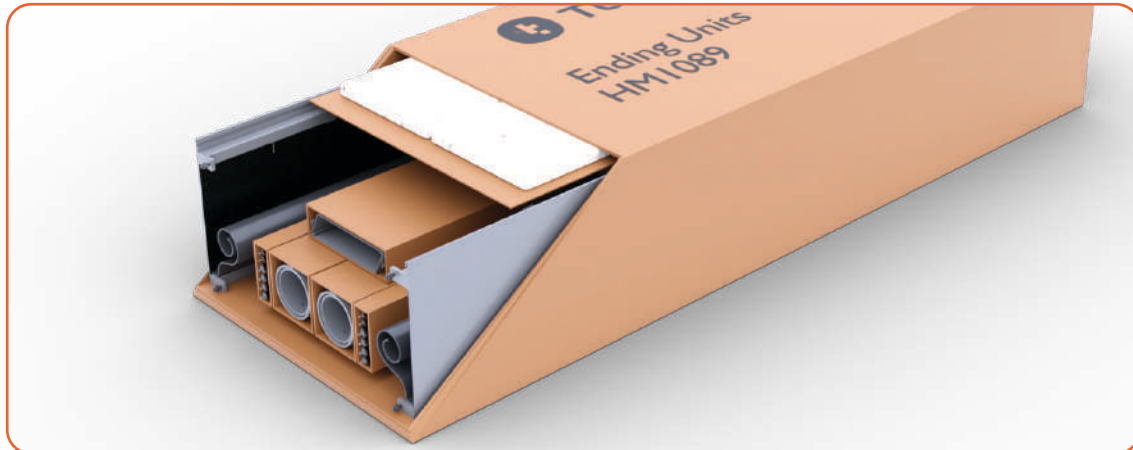
Soundboards



Bolts and tools

HOUSING INSTALLATION : INSIDE THE BOX

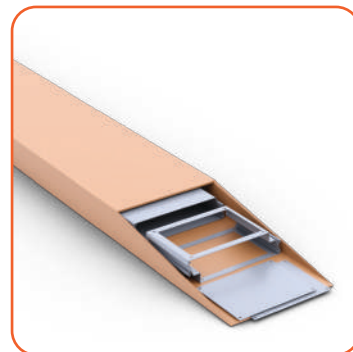
ENDING UNIT - HM1089



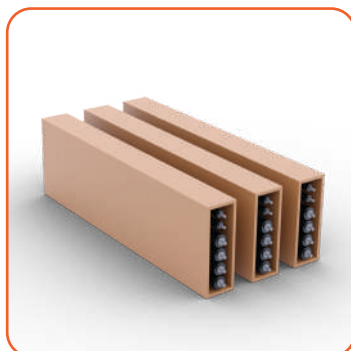
Ending housing frame



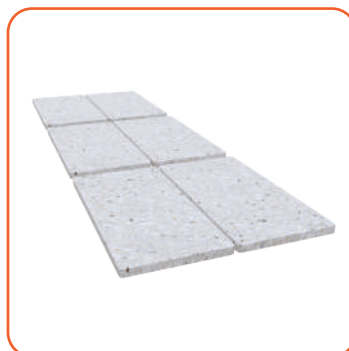
2 tubes



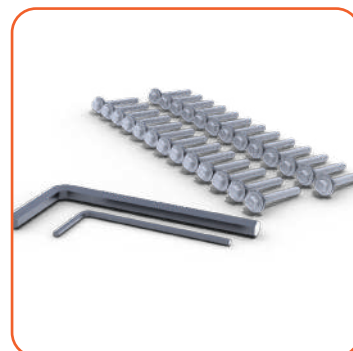
Under-housing covers
and access panels



3 sets of:
4 large rollers
2 small rollers

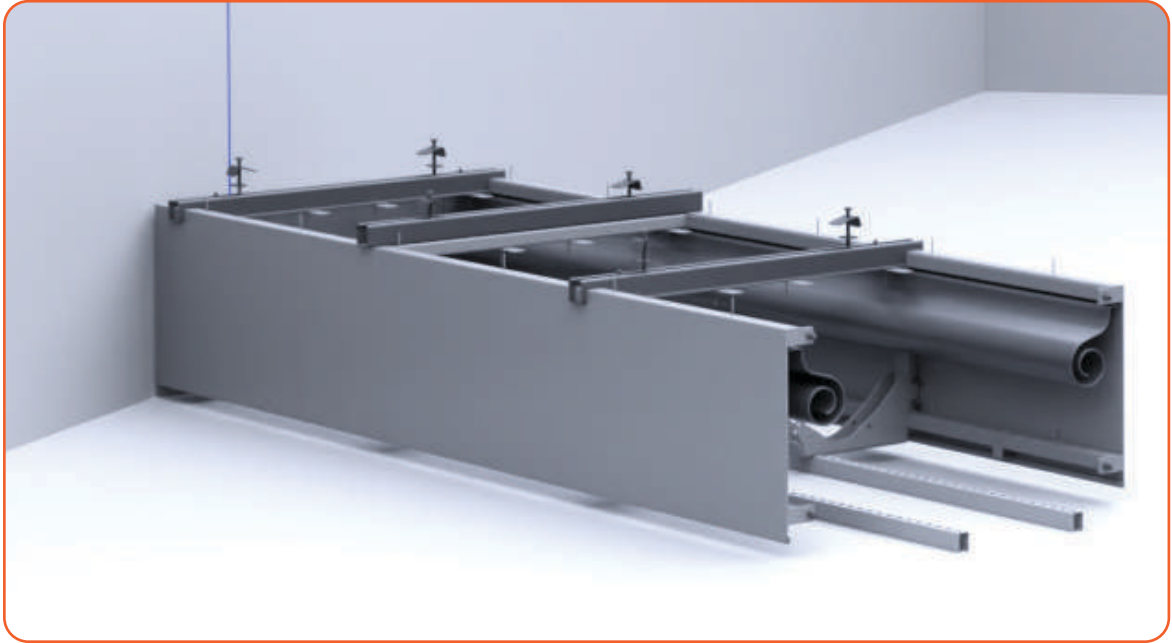


Soundboards



Bolts and tools

HOUSING INSTALLATION : ASSEMBLY



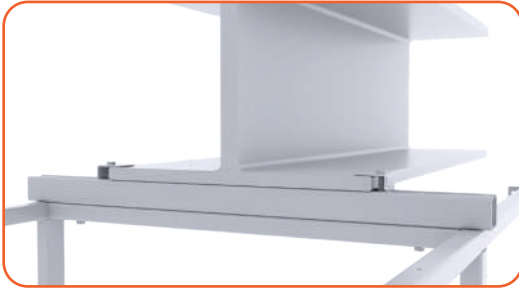
Place metal rods under the housing so the unit remains intact when you lift it



Set all the housing modules on the floor before installation

HOUSING INSTALLATION : ASSEMBLY

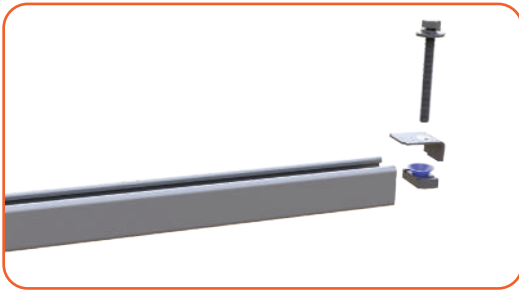
Follow the instructions that are relevant to your system and refer to the mini manual for more information



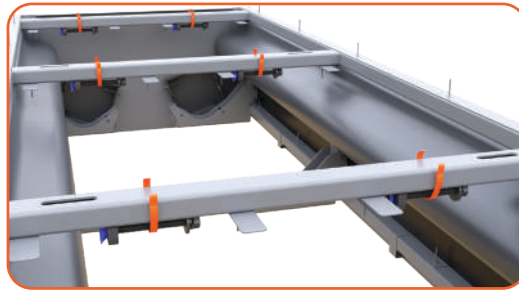
DIRECT TO I-BEAM



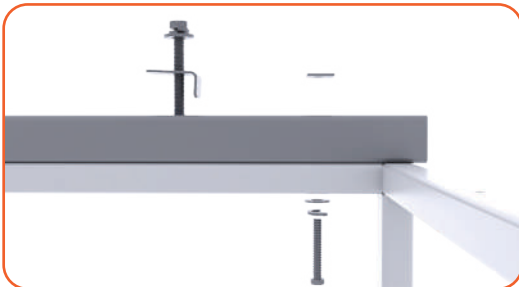
CROSS/DROP SECTION



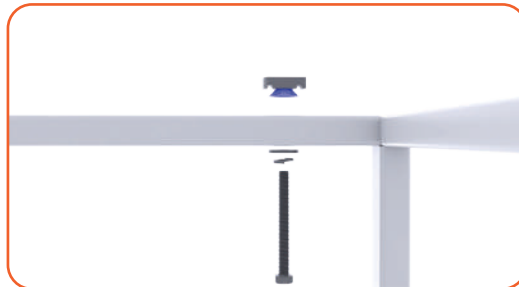
Insert the screw clamp and washers into the unistrut



Disconnect the screws from the housing



Connect the unistrut to the housing
Note: Do not tighten the screw, You will need space for leveling



Insert the screws and washers into the housing



When connecting the unistrut to the housing, make sure the clamp screw is inside to ensure that it locks within



Connect all 6 screws

HOUSING INSTALLATION : INSTALLATION

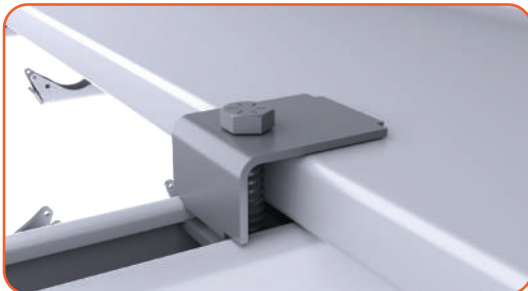


Use the material lift to raise the first housing unit

DIRECT TO I-BEAM



Push the screw clamp in



Tighten the screw

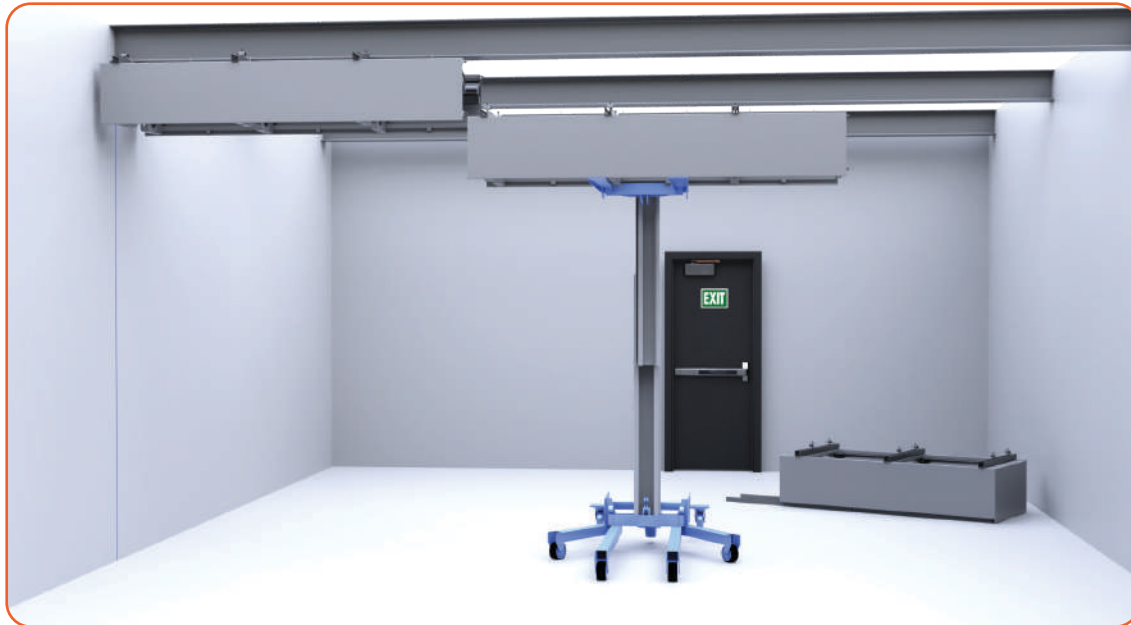
CROSS/DROP SECTION



Push the screw in and rotate

Note: Do not tighten the screw all the way

HOUSING INSTALLATION : INSTALLATION



Repeat the previous steps to install the middle housing frame/s



Repeat the previous steps to install the ending housing frame

HOUSING INSTALLATION : INSTALLATION



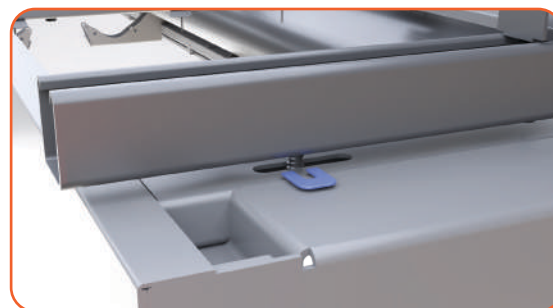
Project a laser beam across the housing. If it isn't leveled, use the laser's lowest point as a guide to level the housing



Check all 4 corners of each housing to ensure they are all leveled



Join each housing unit together



If needed insert a shim to lower the housing



Tighten the screws that connect the housing to the unistrut



Use laser again to ensure all the housing is leveled

HOUSING INSTALLATION : SOUNDBOARDS

END RESULT



INSTRUCTIONS



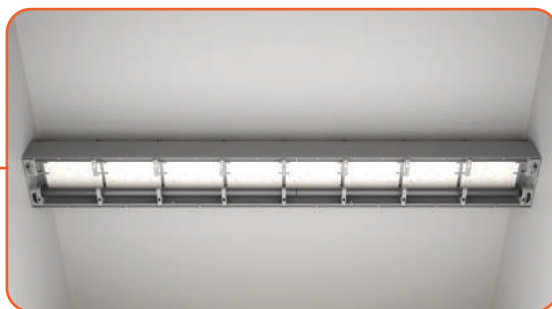
Open the fingers



Insert the boards



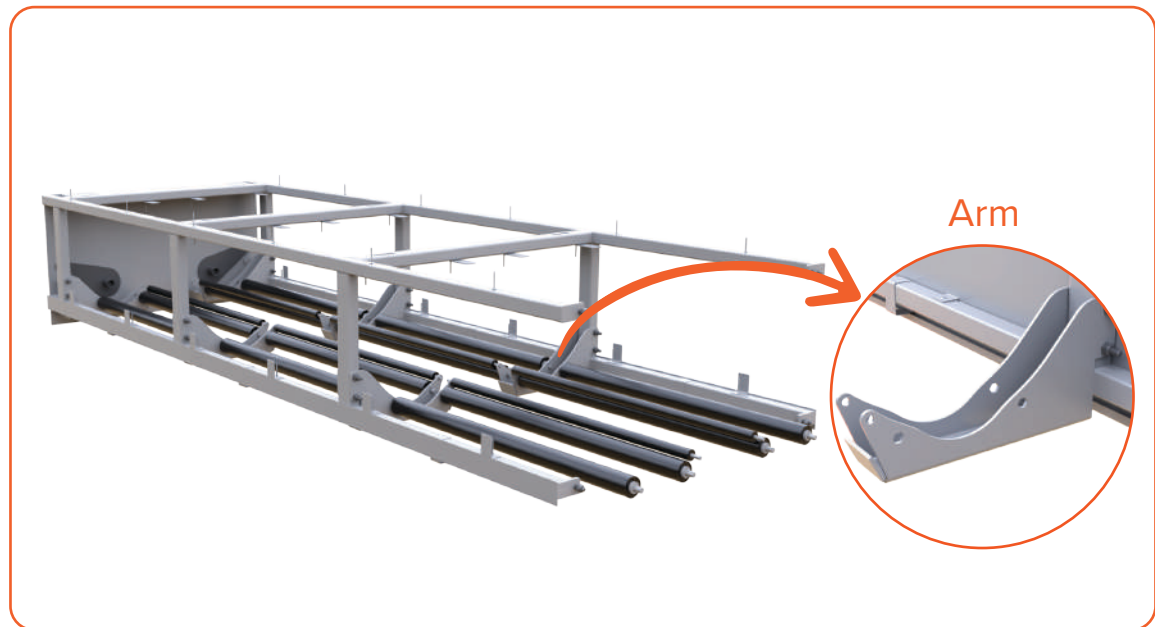
Lock the fingers



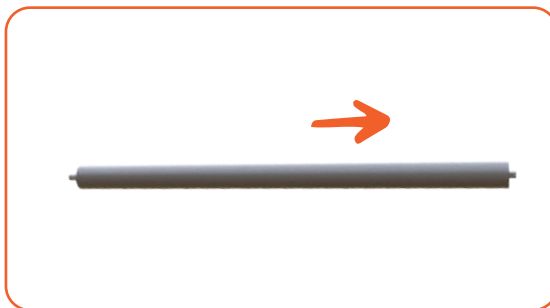
Repeat for all the soundboards

HOUSING INSTALLATION : ROLLERS

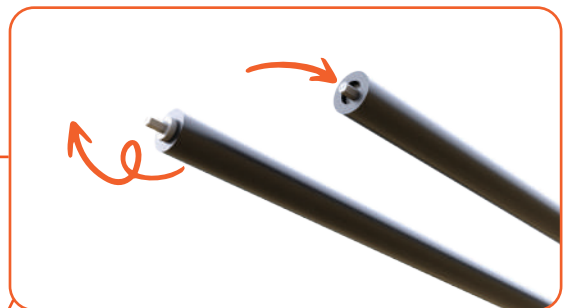
END RESULT



INSTRUCTIONS



All rollers should be facing the same way



Note: Only one side could be pushed in



Insert the rollers into the arms

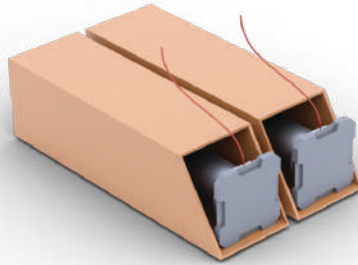
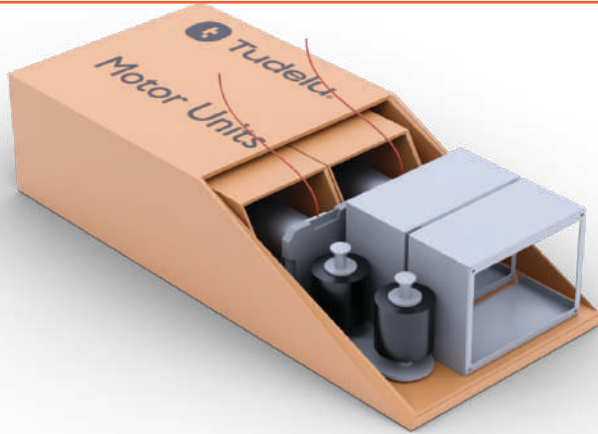
1. Larger rollers go on either side
2. Smaller rollers go in the center



Repeat on the other side

MOTOR UNIT : INSIDE THE BOX

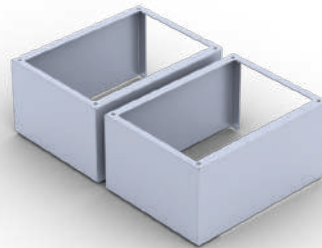
MOTOR UNIT - HM1138



2 motors



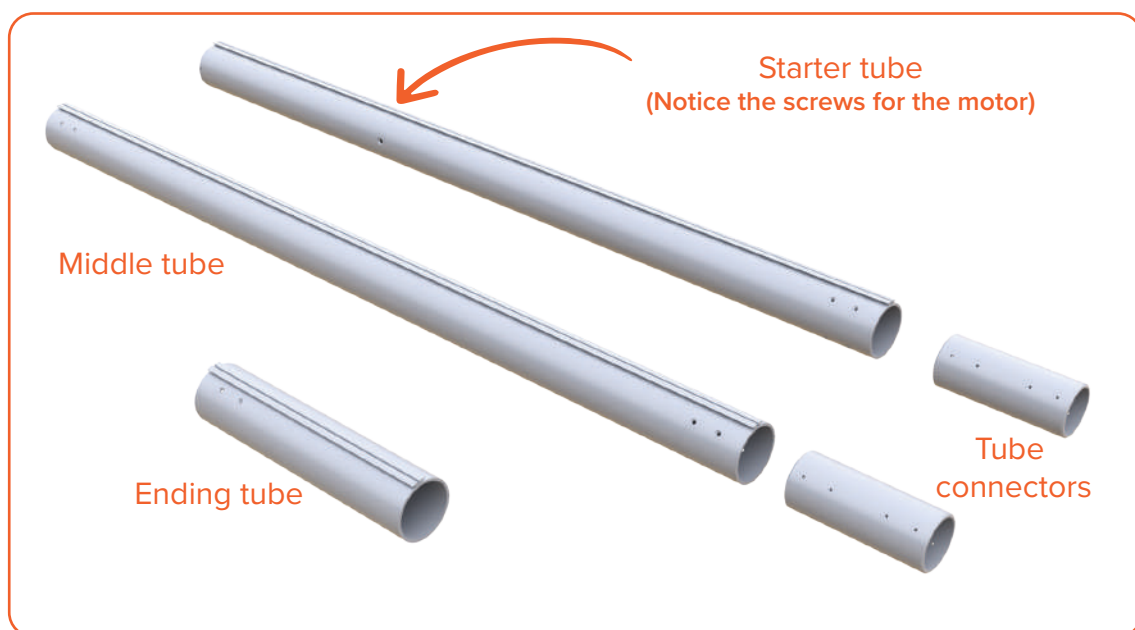
2 idlers



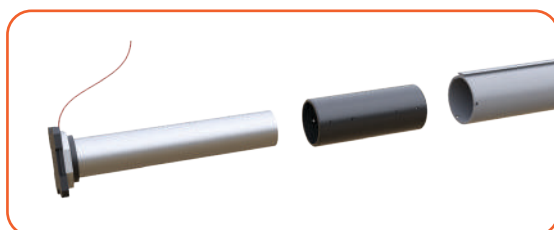
2 control boxes

HOUSING INSTALLATION : TUBE ASSEMBLY

TUBE PART BREAKDOWN



INSTRUCTIONS



Connect the motor to the starter tube

Note: The screws connecting the motor are different than the screws connecting the tubes to the connectors



Connect the starter tube to the tube connector



Push the tube connector halfway to secure



Connect the middle tube to the other end of the tube connector



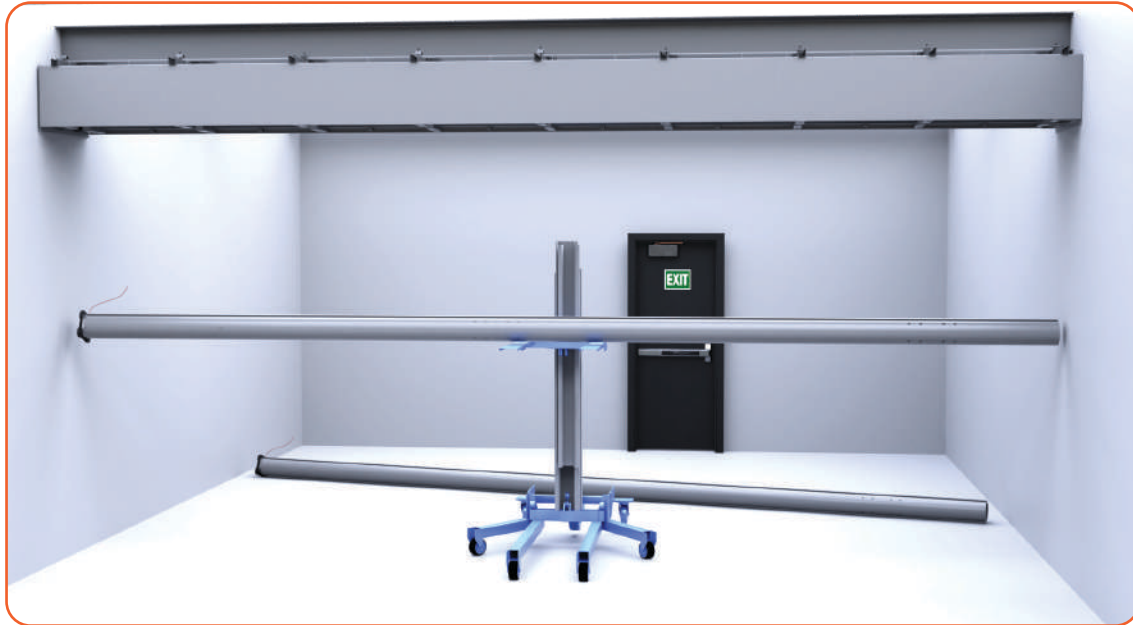
Repeat until all the tubes are connected



Insert the idler to secure the system

HOUSING INSTALLATION : TUBE INSTALLATION

INSTRUCTIONS



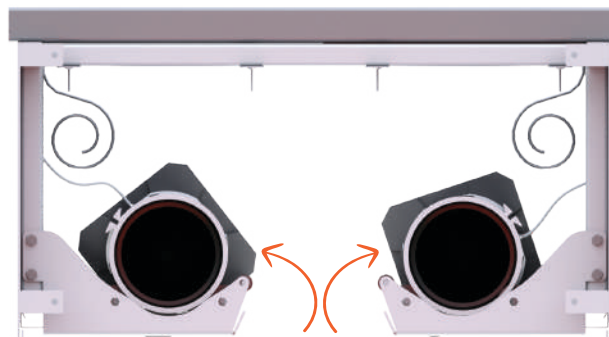
Use the material lift to raise the connected tubes to the housing system



Lift the tubes to the center of housing

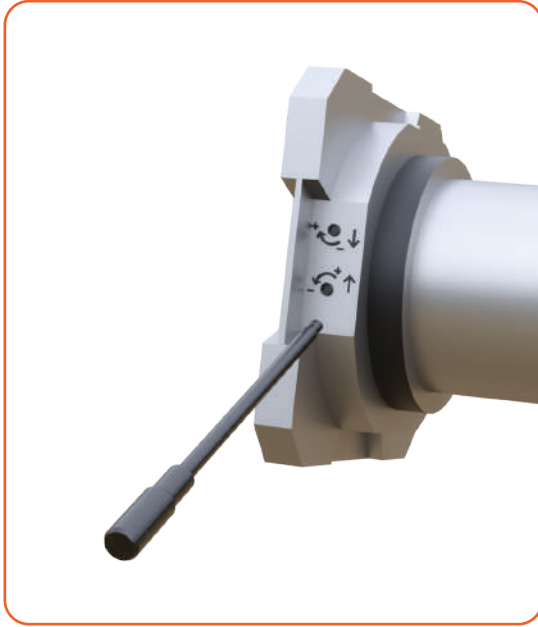


Push the tubes into the arms on both sides

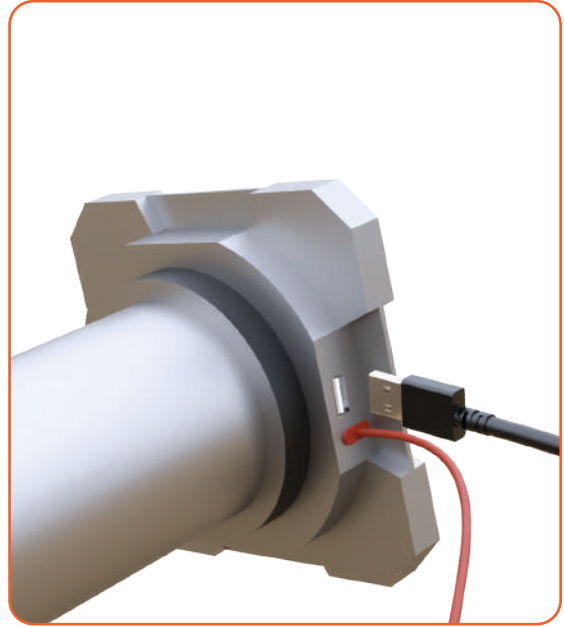


Side view of the tubes inside arms

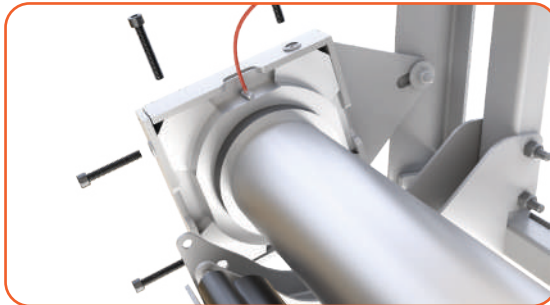
HOUSING INSTALLATION : TUBE INSTALLATION



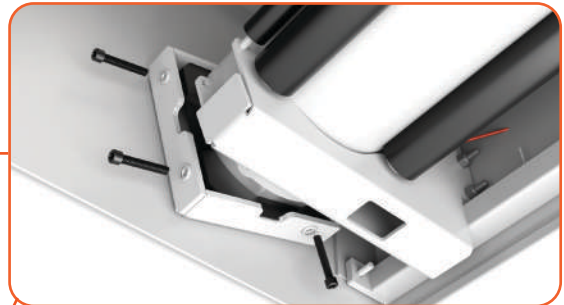
Ensure that the limit adjusters are on the bottom of the housing (facing the floor)



Connect the second wire



Remove the screws and insert the motor into the motor connector (make sure it's all the way in)

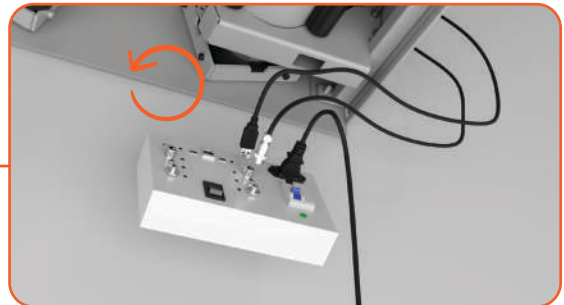


Insert and tighten the screws



Connect the tube wire to the temporary connection

You can use the black flip switch for temporary operation and testing during assembly



Rotate the motor downwards

Warning: Avoid toggling the control box frequently to prevent potential damage

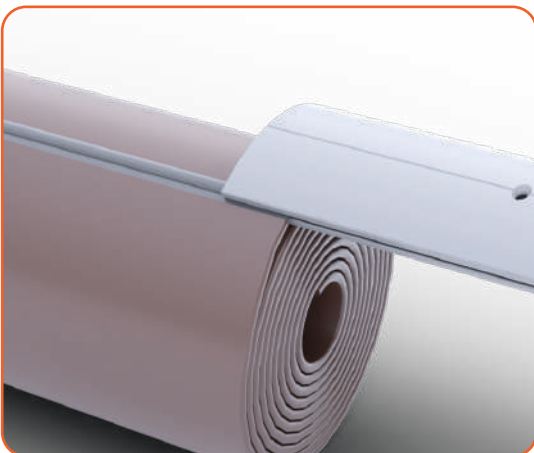
WALL PANEL UNIT : INSIDE THE BOX



Heavy-duty paper tubes



Rolls of wall panels (inside paper tubes) and hook attachment

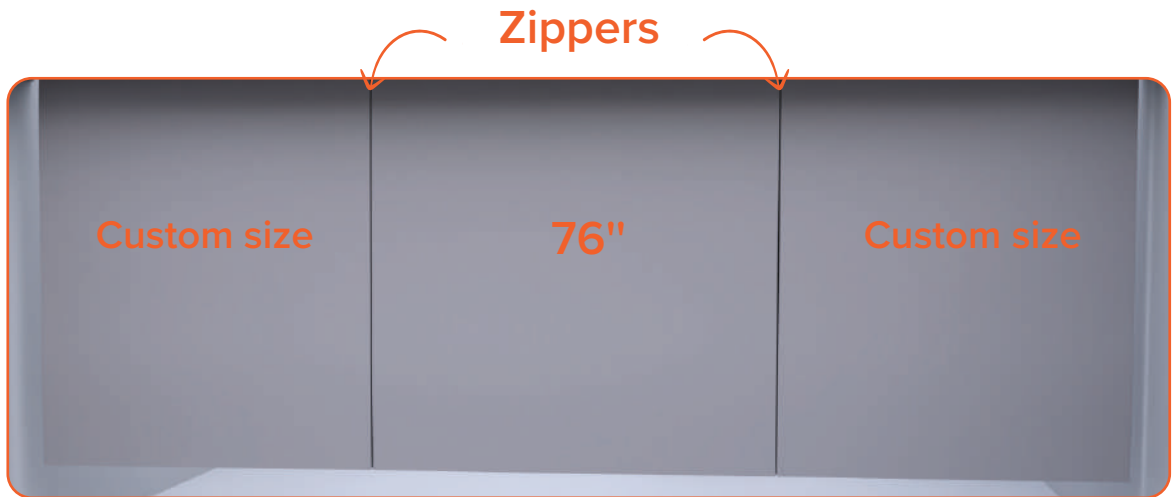


Slide the hook attachment into the wall panel



Press on the end off the hook attachment to lock it into place. You should hear a slight click so you know its connected.

WALL PANEL UNIT : INSTALLATION

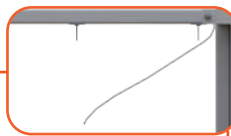


Largest wall section uses the zipper and the smallest section is what is custom

INSTRUCTIONS



Cut the zipties



open the flap



and connect to the second flap



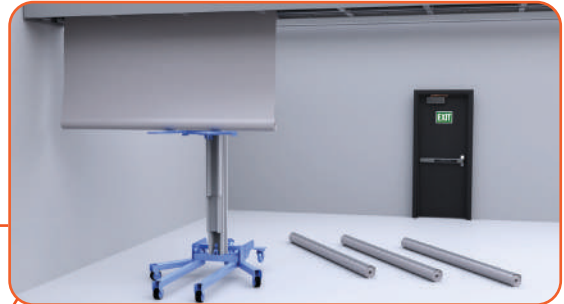
Use the material lift to raise the wall panel



Connect the top of the metal attachment to the tube



Then click in to the top



Slowly lower the lift

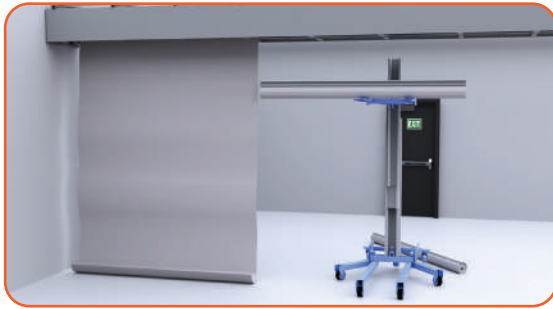


Slide the wall panel to 3" from the wall

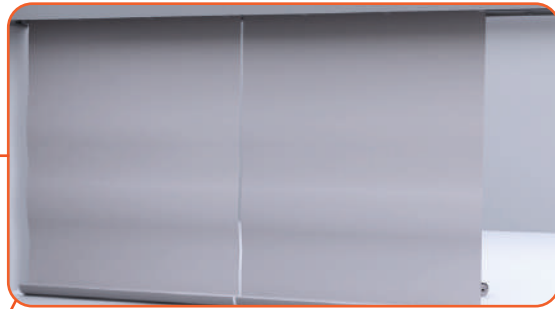


Measure 3" from the wall

WALL PANEL UNIT : INSTALLATION



Raise the next wall panel roll



Slide it next to the first wall panel



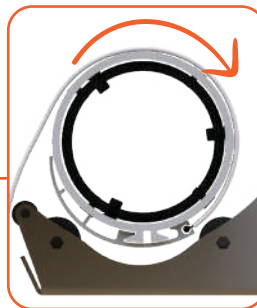
Start zipping from the bottom
Note: Make sure both walls are aligned



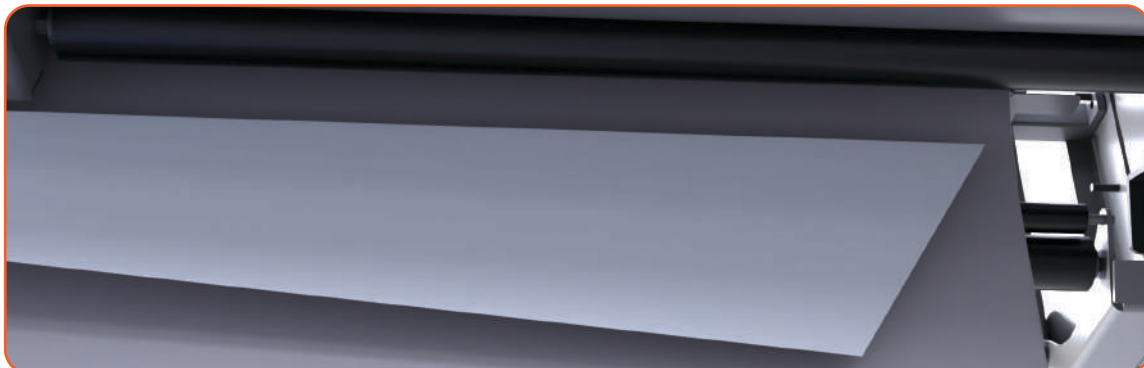
Add a stopper and continue zipping to the top



Zip to the top add a stopper and tape the zipper to the tube



Rotate the tube facing down and insert the screws

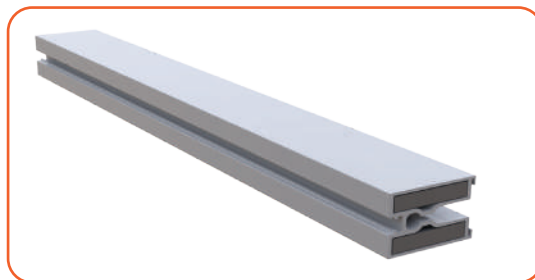


If needed: Insert a shim under the wall panel on the motor size. This section needs to be as straight as possible

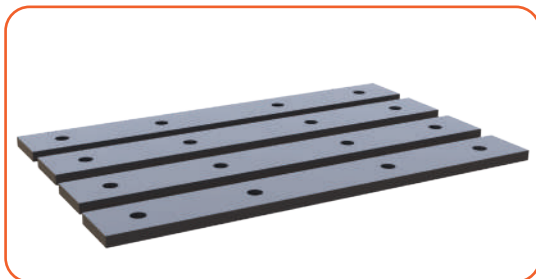
WEIGHT AND BOTTOM BAR : INSIDE THE BOX



2 bottom bars



2 weight bars



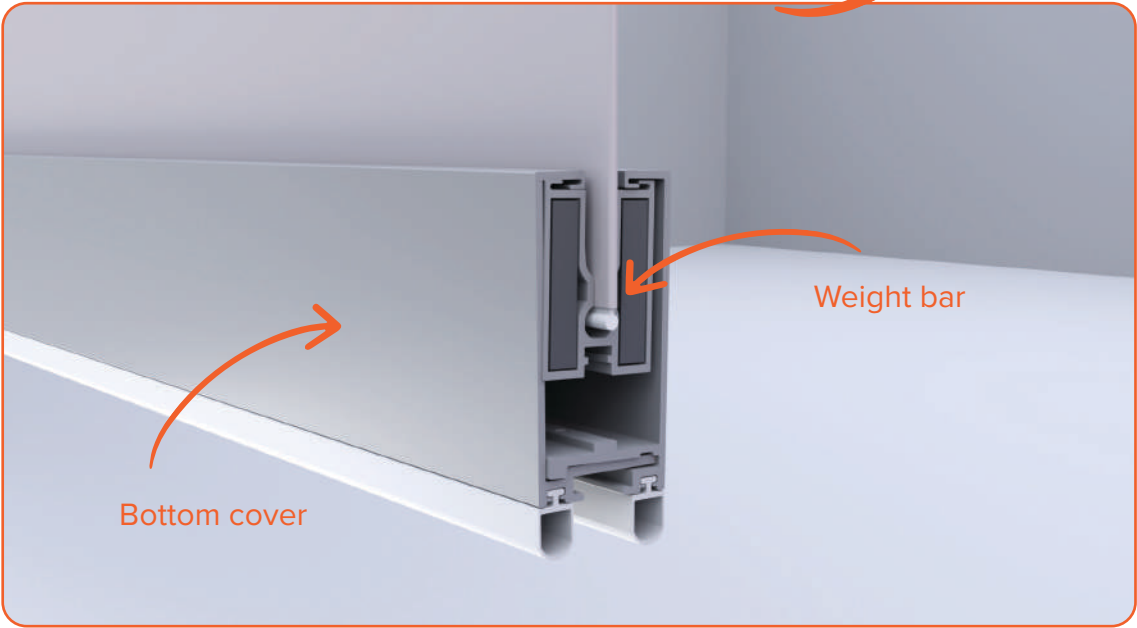
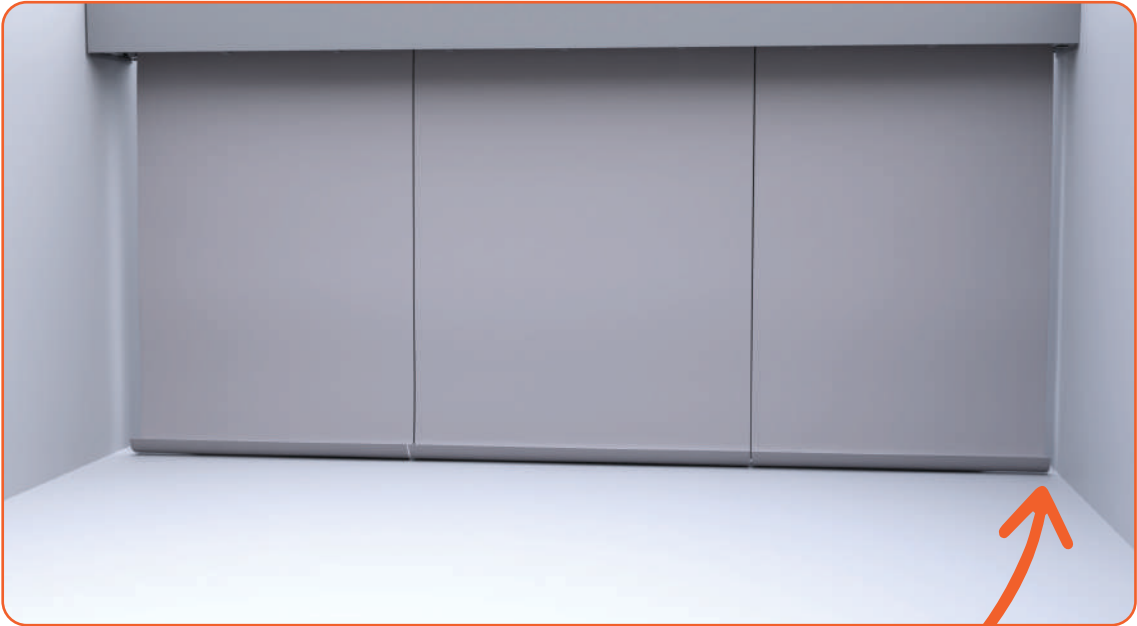
Bottom bar connectors
(Thick)



Weight bar connectors
(Thin)

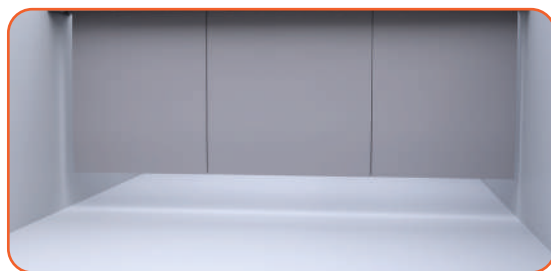
WEIGHT AND BOTTOM BAR : INSTALLATION

END RESULT



Side view

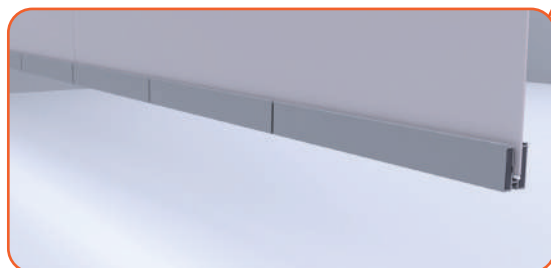
WEIGHT AND BOTTOM BAR UNIT: INSTALLATION



Raise the wall panels off the floor to make it easier to insert the bars



Slide the weight bar into the wall panel



Repeat the previous steps to all the wall panels



Slide the small weight bar connector into the weight bar under the wall panel



Insert the screws into the weight bar connector



Attach the bottom bar



Attach the other side of the bottom bar



Slide the large weight bar connector into the bottom part of the weight bar



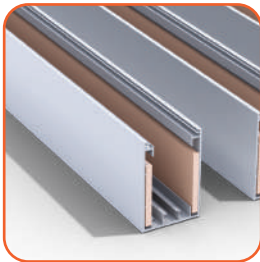
Insert the screw and tighten



Repeat the steps to the other side of wall and insert the covers

SIDE GUIDE : INSIDE THE BOX

SIDE GUIDE UNIT - GM1018



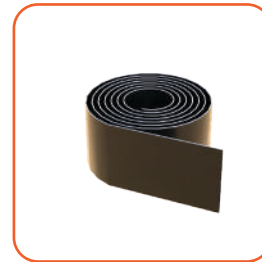
Side guide
extrusion



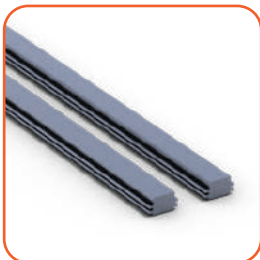
Aligners



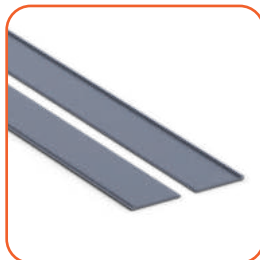
Connectors



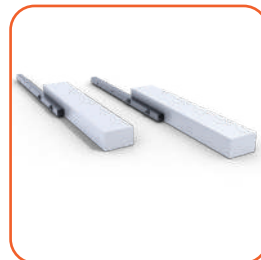
Sensor cable
raceway



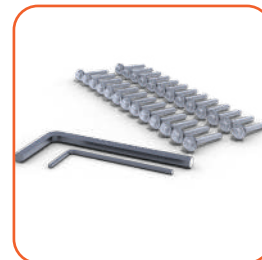
SG-13 sensor
transmitter *



Rubber seal



Top attachment



Tools & screws

DO NOT REMOVE PROTECTIVE FILM UNTIL CONSTRUCTION IS COMPLETE

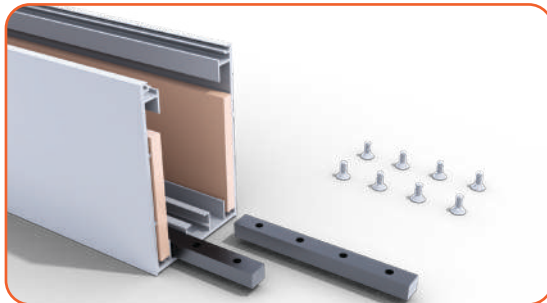
*this piece is ONLY available if ordered separately.

SIDE GUIDE : ASSEMBLY

END RESULT



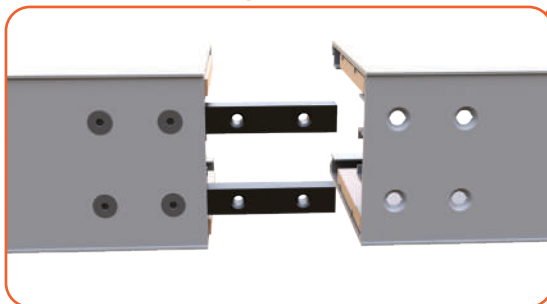
INSTRUCTIONS



Insert the connectors into the side guide



Insert and tighten the screws



Connect the second side guide to the first



Insert and tighten the screws



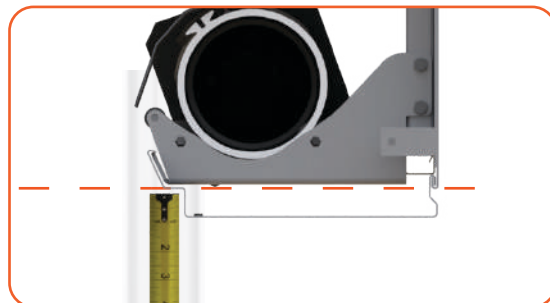
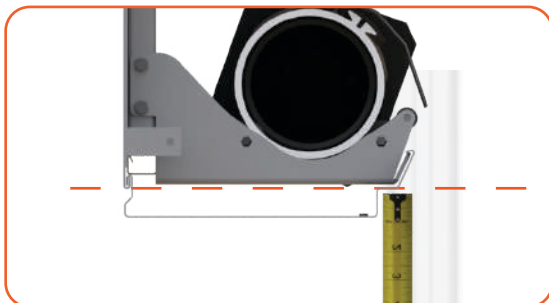
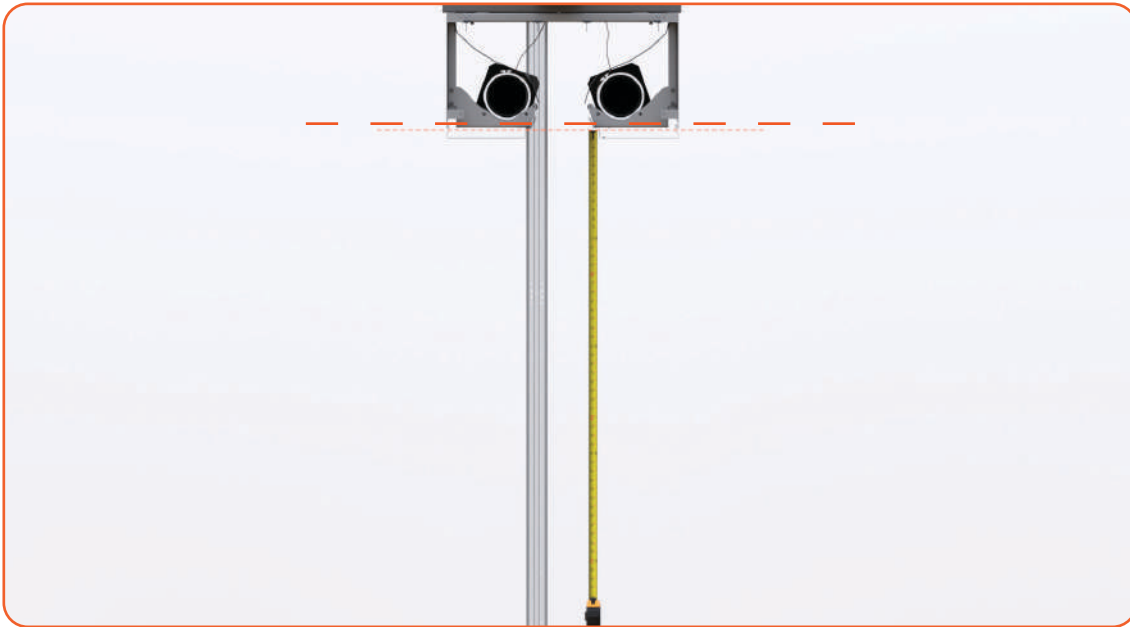
Insert the aligners



Use an allen key to tighten the screws

SIDE GUIDE : ASSEMBLY

After assembling the side guides, measure the height from the housing to the floor and cut the side guides accordingly

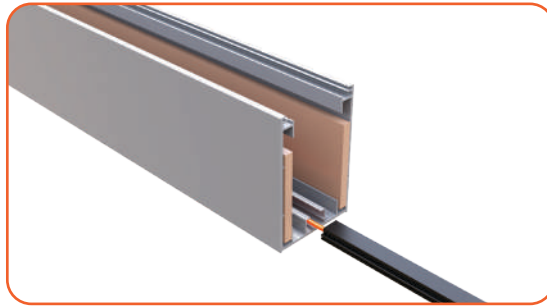


Insert the first housing cover temporarily to ensure the measurements are correct

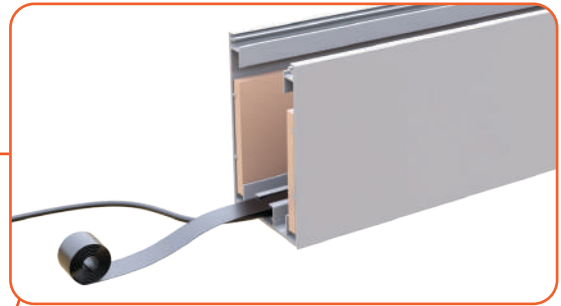


cut side guide accordingly

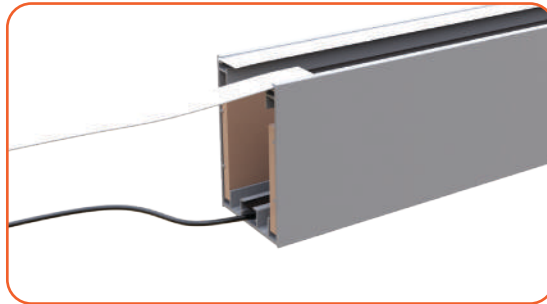
INSTRUCTIONS



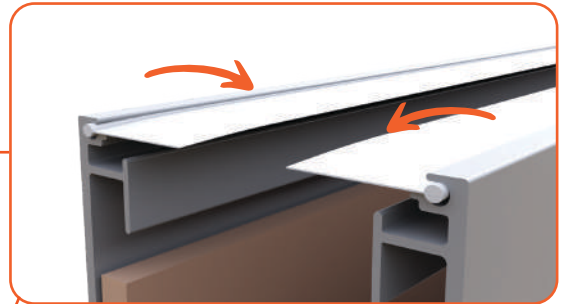
* Insert an SG-13 sensor transmitter into to one track and reciver into the other
Note: Sensor should be facing up



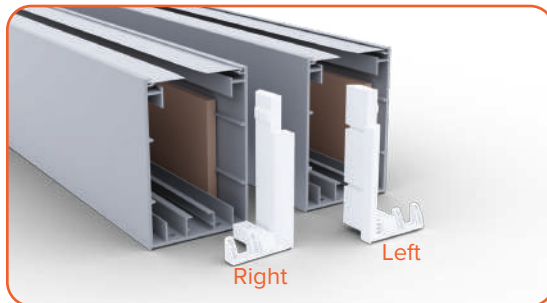
To secure the wire, insert the raceway on top of the sensor cable from the top



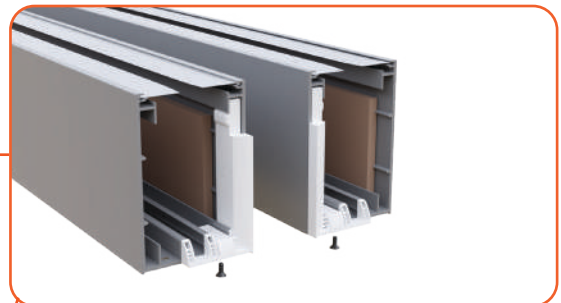
Slide the rubber seals into the side guide



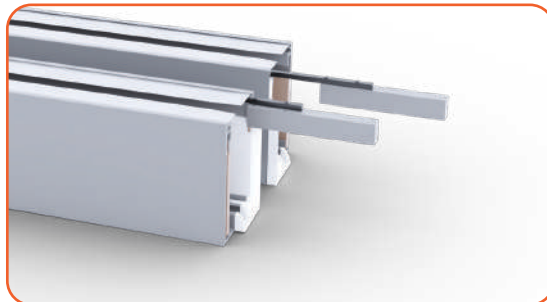
Make sure the rubber are facing inside



Insert the top attachments on top of each system (facing inside)



Insert screws to lock it into place



Slide both top attachments on top of each system (facing inside)

*this piece is ONLY available if ordered separately.

SIDE GUIDE : INSTALLATION

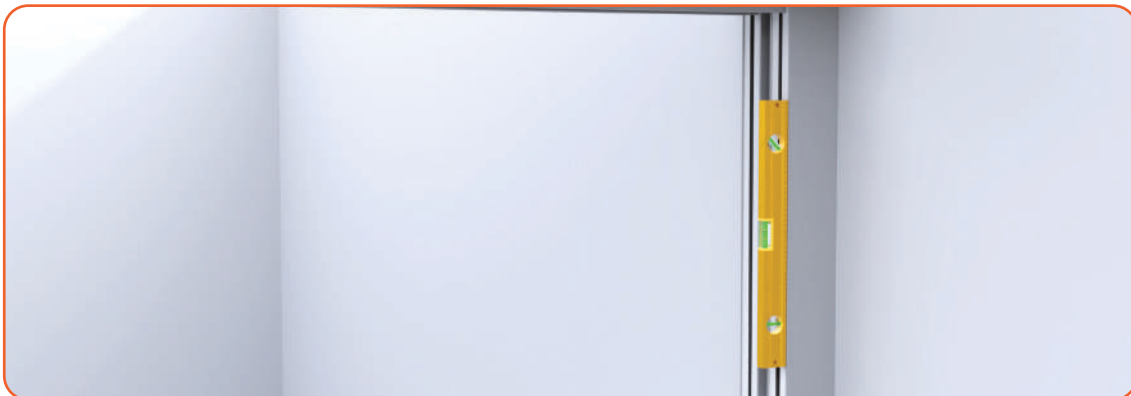
INSTRUCTIONS



Insert the side guide into the middle of the housing



Push it against the wall



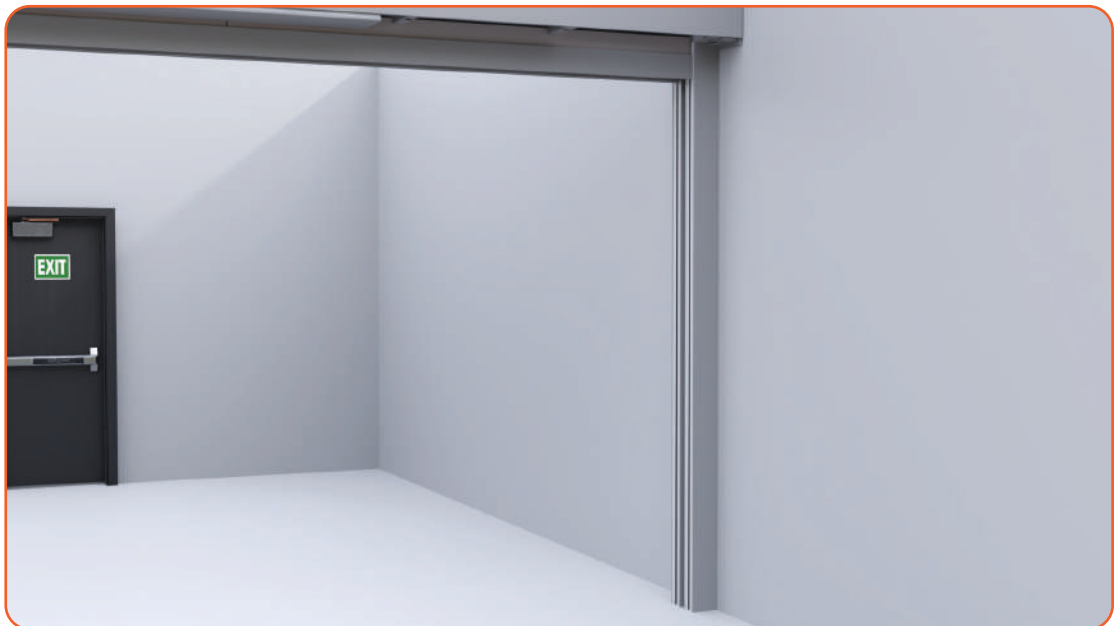
Use a level to make sure the front and side are leveled

Note: the side with the longer wire should go the opposite side of the motor

SIDE GUIDE : INSTALLATION

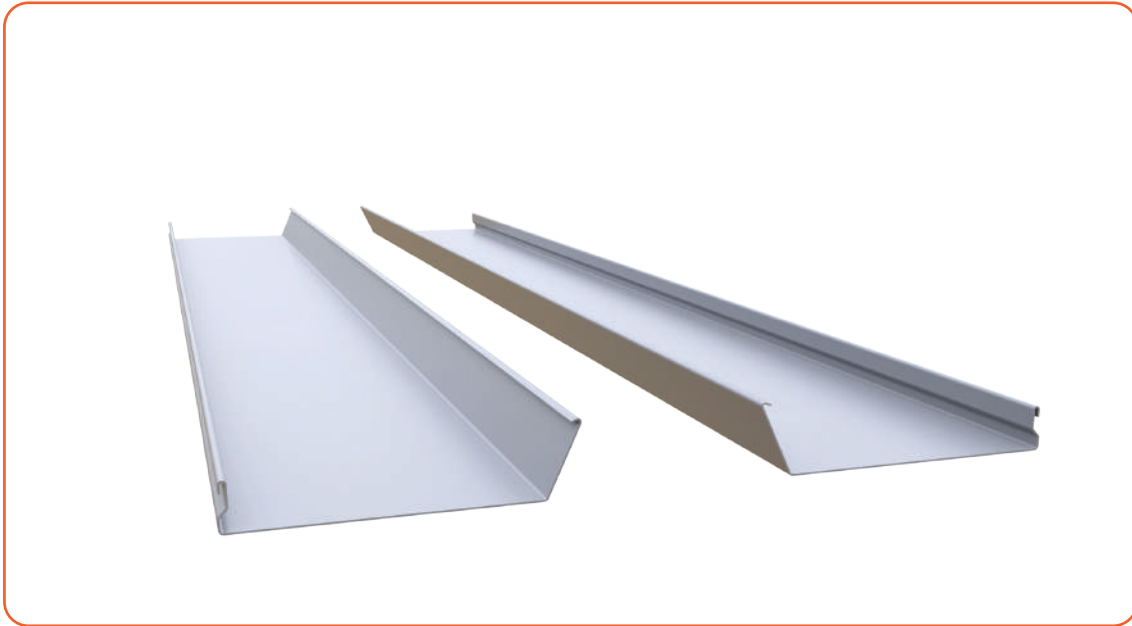


Insert the bolts into the side guide

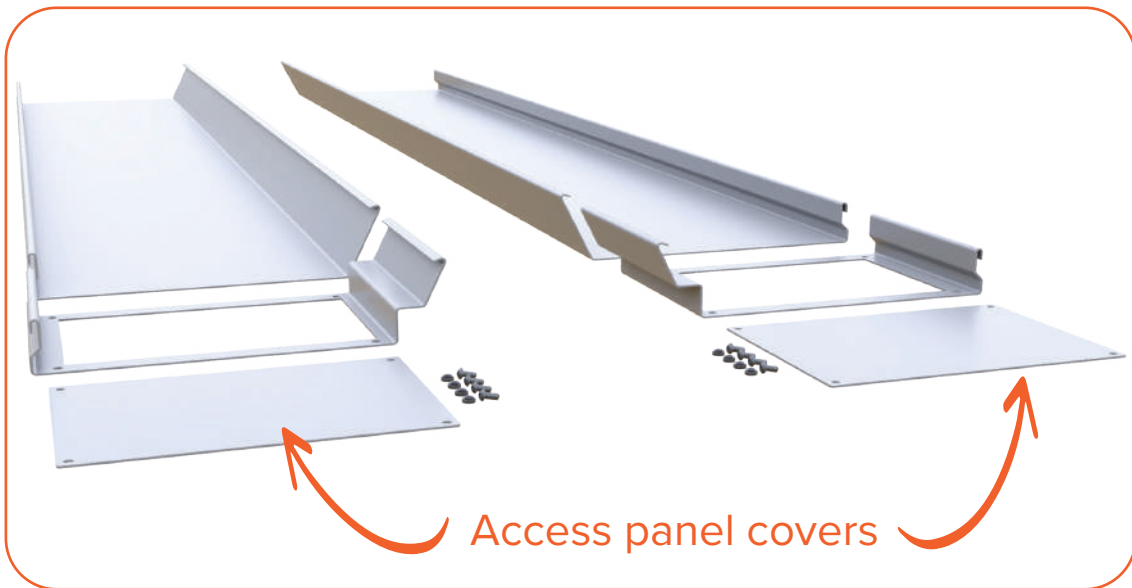


END RESULT

UNDER-HOUSING COVER : INSIDE THE BOX



Middle under-housing covers

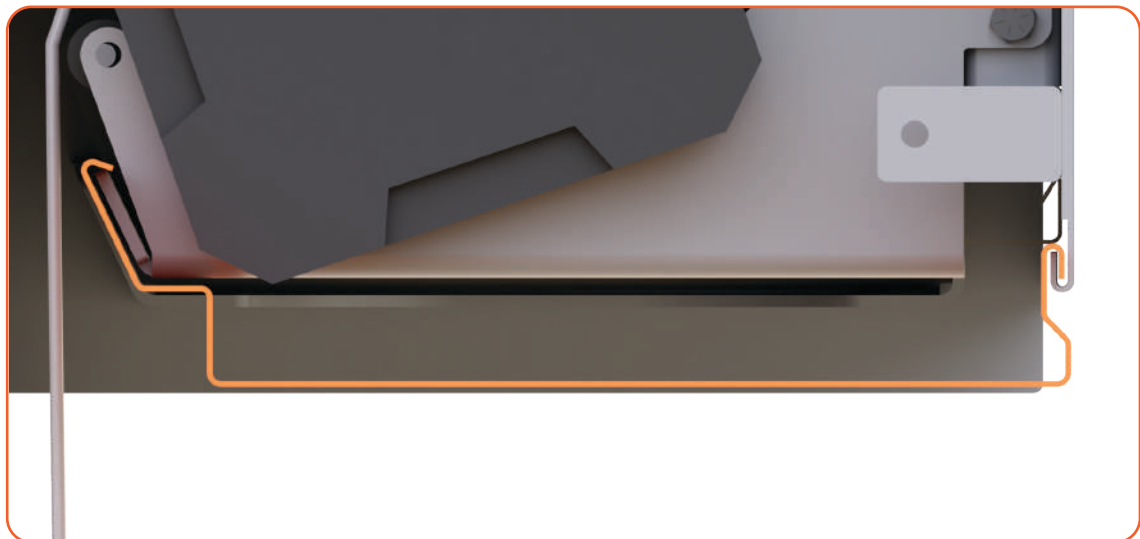


Beginning/ending under-housing covers

DO NOT REMOVE PROTECTIVE FILM UNTIL CONSTRUCTION IS COMPLETE

UNDER-HOUSING COVER : INSTALLATION

END RESULT



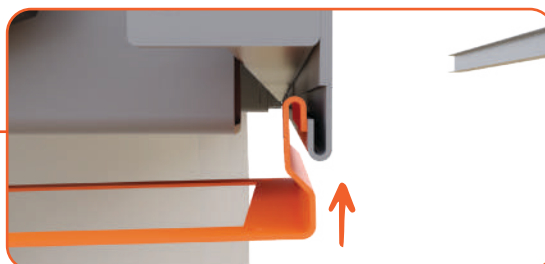
Side view of under-housing cover

UNDER-HOUSING COVER : INSTALLATION

INSTRUCTIONS



Hook the under-housing cover to the inside of the housing



Hook onto the other side



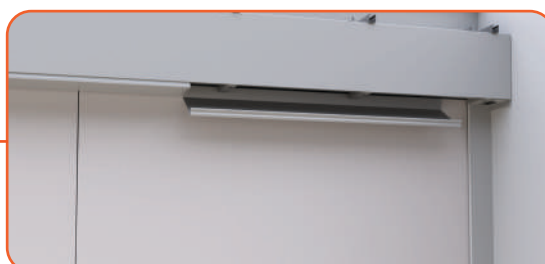
Insert the beginning under-housing access panel



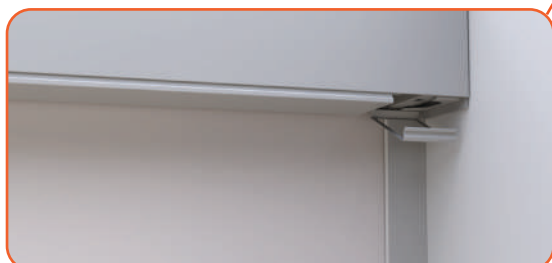
Clip it in



Insert the smallest size (lengthwise) under-housing cover and clip it in



Repeat the previous steps for the rest of the under-housing covers



Insert the access panels covers in the beginning and ending housing



Insert the aligner piece and tighten the screws



Screw the bottom covers on the idler end

CONTROL BOX : INSTALLATION



Screw control box into access panel in beginning housing and then into wall



Insert the control box



Connect all the wires and wait for the green light

Wires need to follow the “Side A” and “Side B” as shown on the box
Make sure all connectors are in the correct place **DO NOT FORCE THEM IN!**



close the box and insert the screws

HEAT STRIPS : INSTALLATION



Heat up the edge of your panel



Use the scraper to blend both pieces together

CAUTION fabric will be hot

If any section does not completely connect after cooled, use
vinyl glue to patch any holes

CONGRATULATIONS ON YOUR MASTERPIECE!

View with the partition raised



View with the partition lowered

