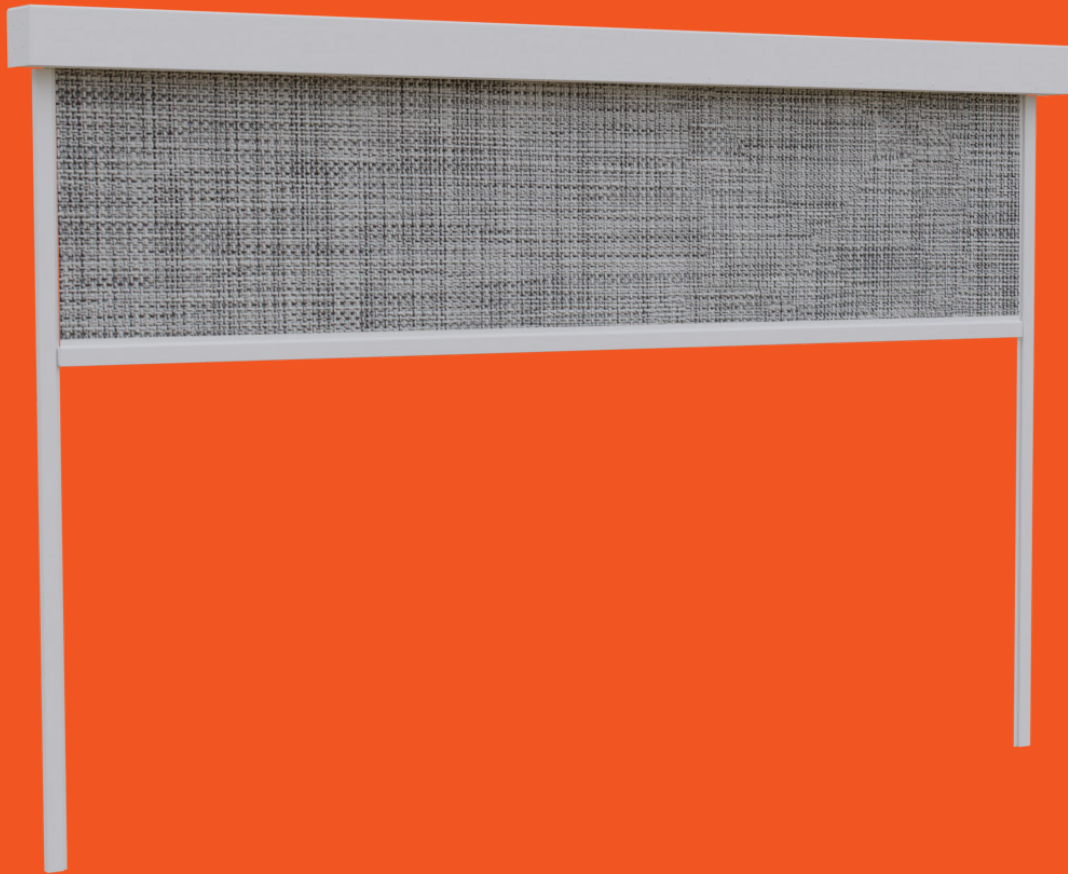


# Installation Manual



**SYSTEM:**  
Closure



**Tudelu®**

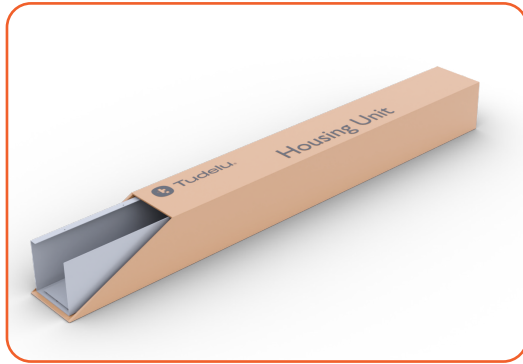


## TABLE OF CONTENTS

PRE-INSTALLATION CHECKLIST	
BOXES CHECKLIST	4
TOOLS CHECKLIST	5
BRACKETS:	
INSIDE THE BOX	6
INSTALLATION	7
HOUSING UNIT:	
INSIDE THE BOX	8
INSTALLATION	9
LASER CHECK	10
TUBE UNIT:	
INSIDE THE BOX	11
INSTALLATION	12
REMOTE CONNECTION	13
WALL PANEL:	
INSIDE THE BOX	14
INSTALLATION	15
SIDE GUIDE:	
INSIDE THE BOX	18
INSTALLATION	19
HOUSING COVER	21
MOTOR LIMITS	22

## BOXES CHECKLIST

Before getting started, make sure you received each of the following boxes.



Housing Unit/s\*



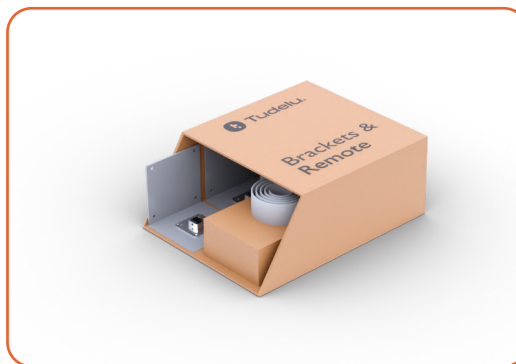
Tube and Bottom Bar



Wall Panel



Side Guide



Brackets & Remote

\*amount depends on the length of your specific system

# TOOLS CHECKLIST

These are the tools you'll need to install your system.



Laser



Flat screwdriver



Drill bits/  
Hex Head Bits



Tape measure



Ladder



Drill



Leveler



Extension cord



Plier



Duct tape

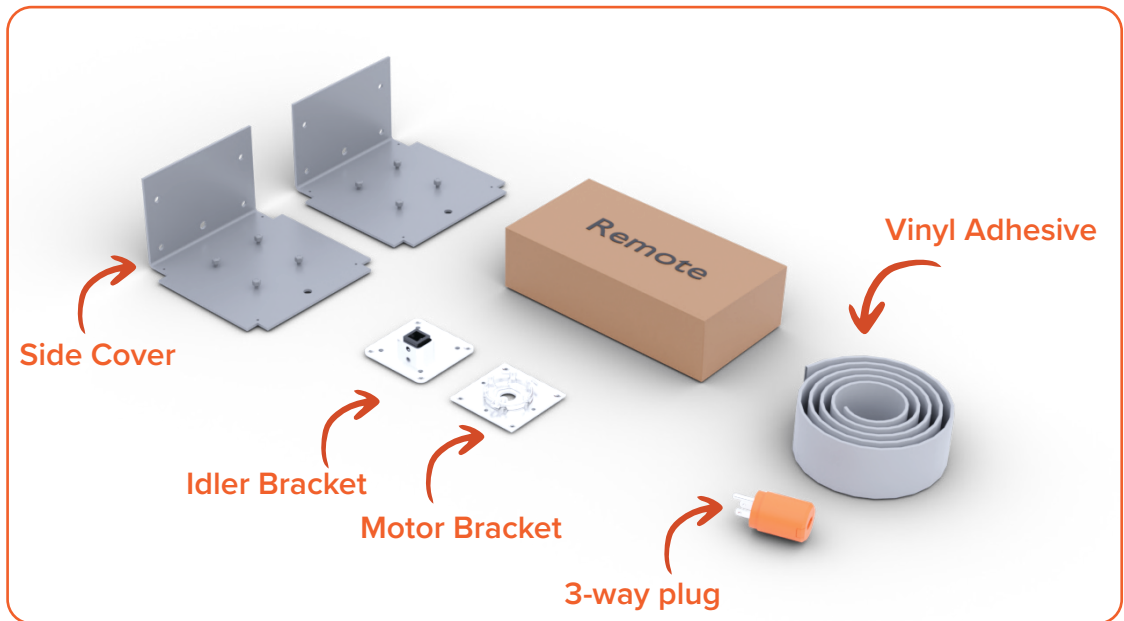


Saw  
With aluminum blade



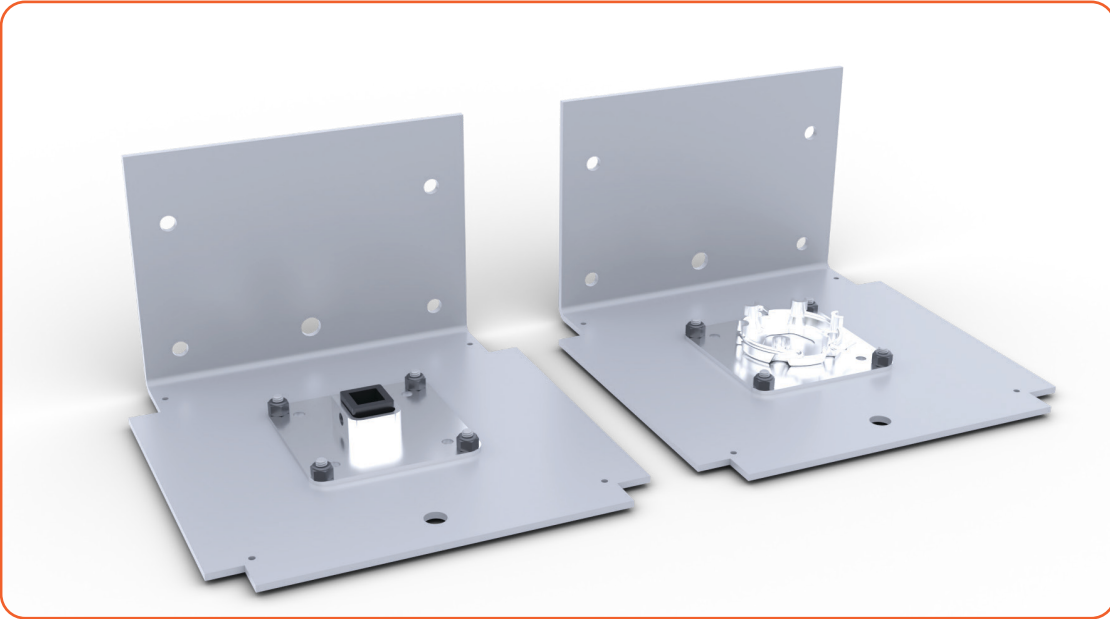
Material lift

## BRACKETS: INSIDE THE BOX

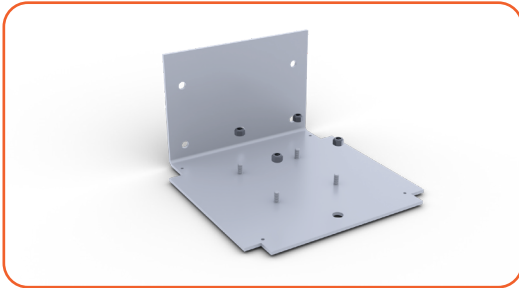


## BRACKETS: INSTALLATION

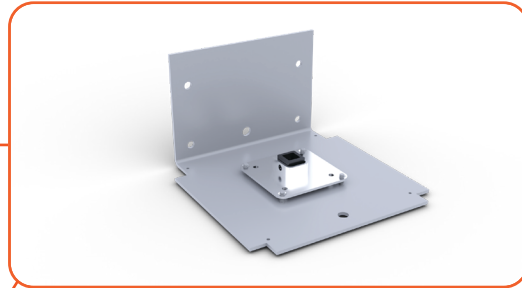
END RESULT



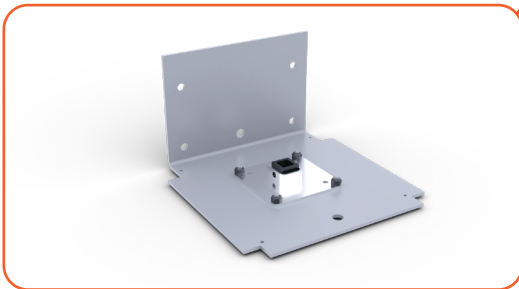
### INSTRUCTIONS



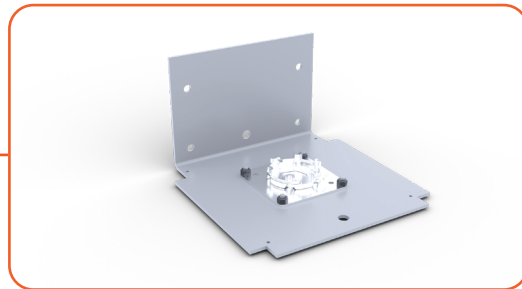
Remove the nuts



Insert the bracket

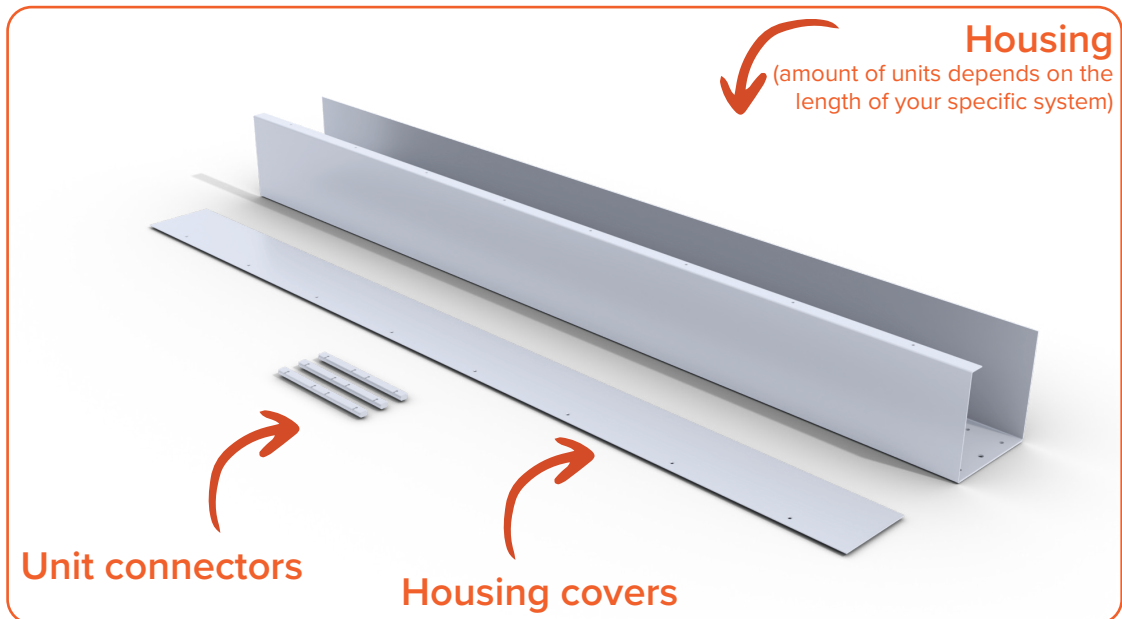
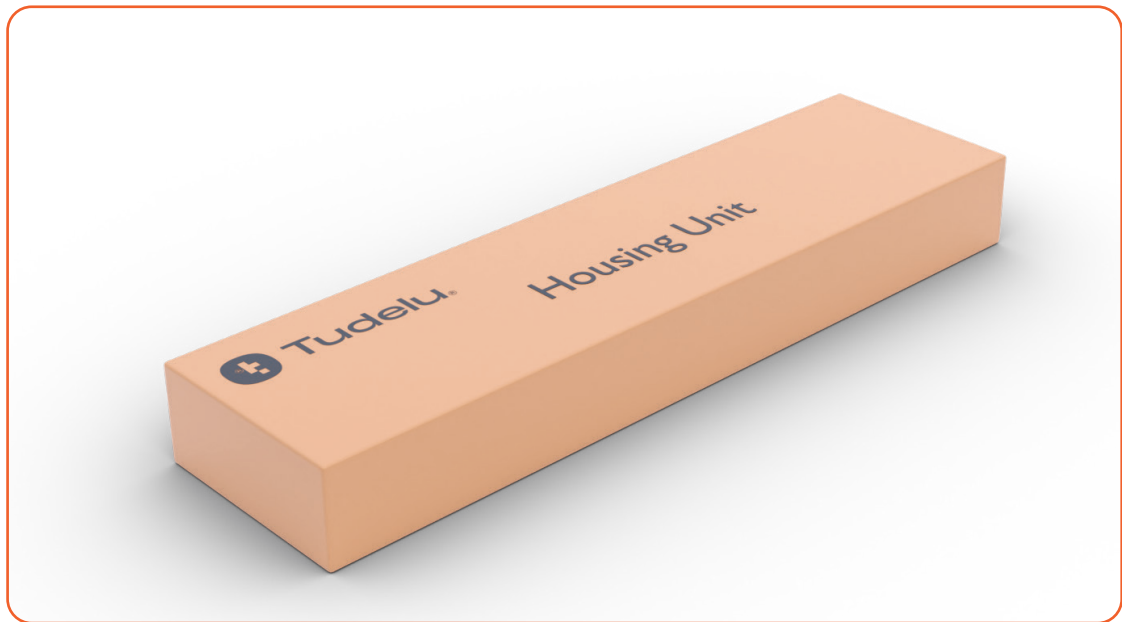


Tighten the nuts



Repeat for the motor bracket

## HOUSING UNIT: INSIDE THE BOX



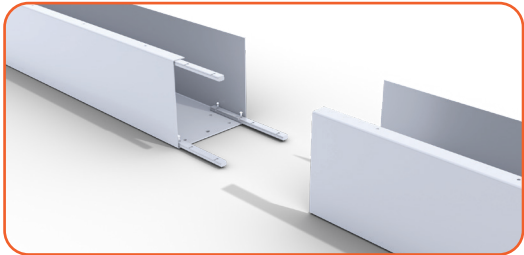
# HOUSING UNIT: INSTALLATION

END RESULT

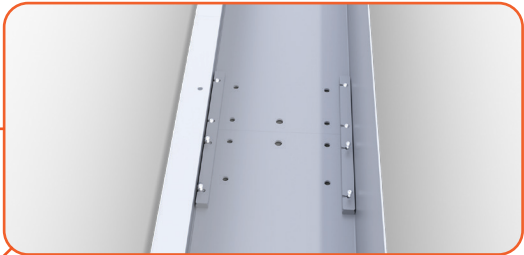


## INSTRUCTIONS

NOTE: Start with the side closest to the room power



Insert the housing connector



Connect the section housing



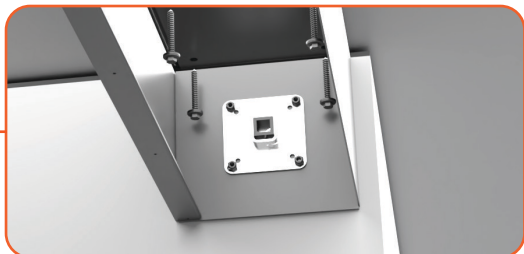
Lift up the housing



Insert screws into the ciling



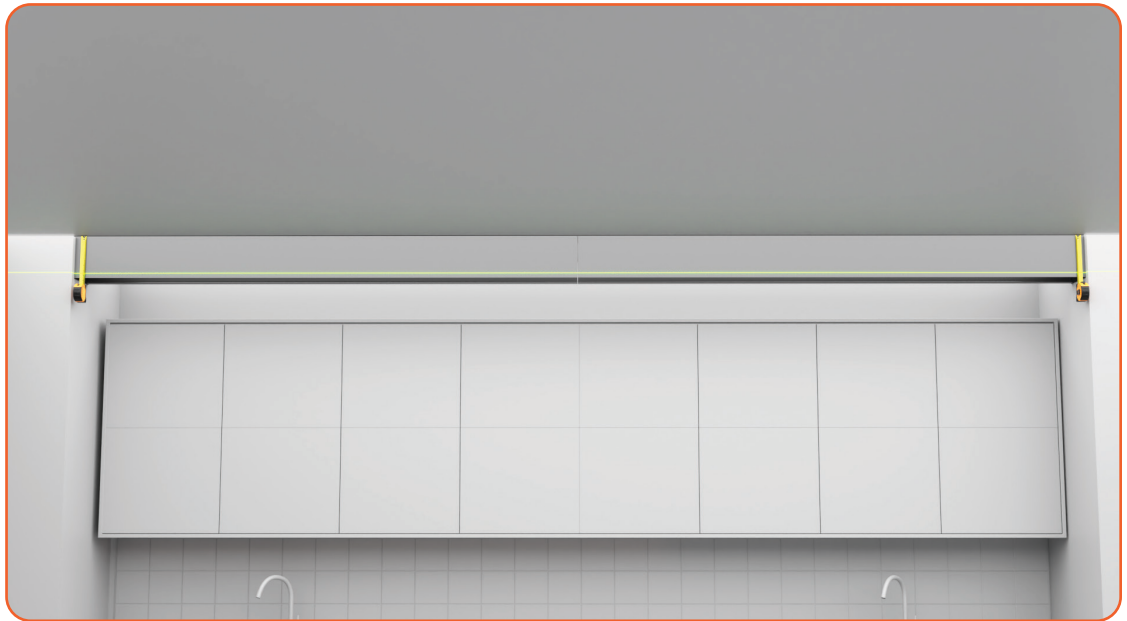
Insert screws to top and side of idler bracket and tighten into ciling



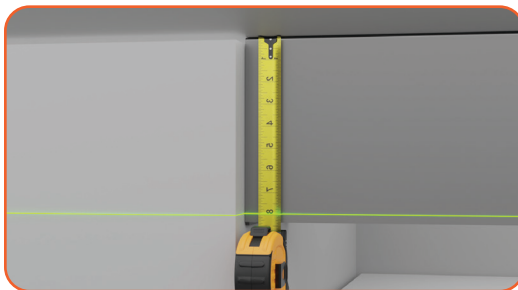
Repeat with motor bracket

## HOUSING UNIT: LASER CHECK

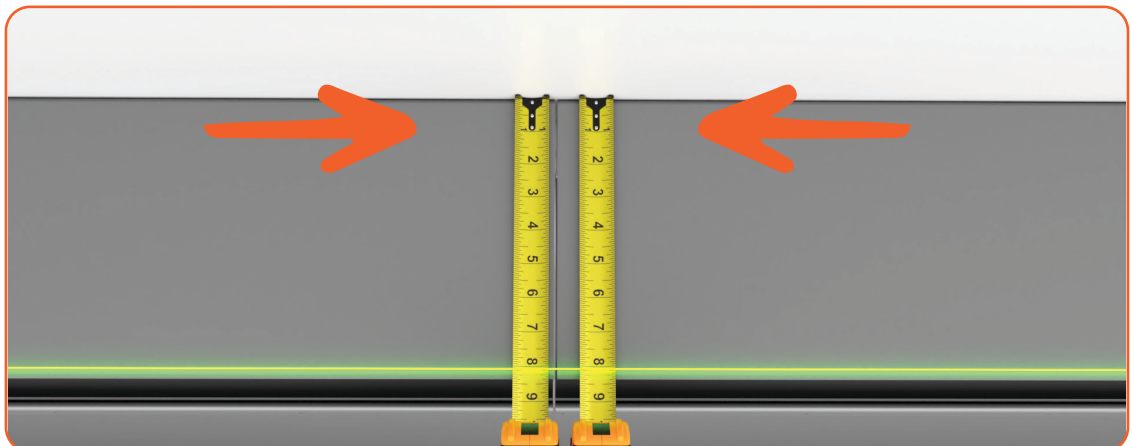
NOTE: it is extremely important that all housing units are the same exact height.



Use the laser to ensure the housing unit is leveled

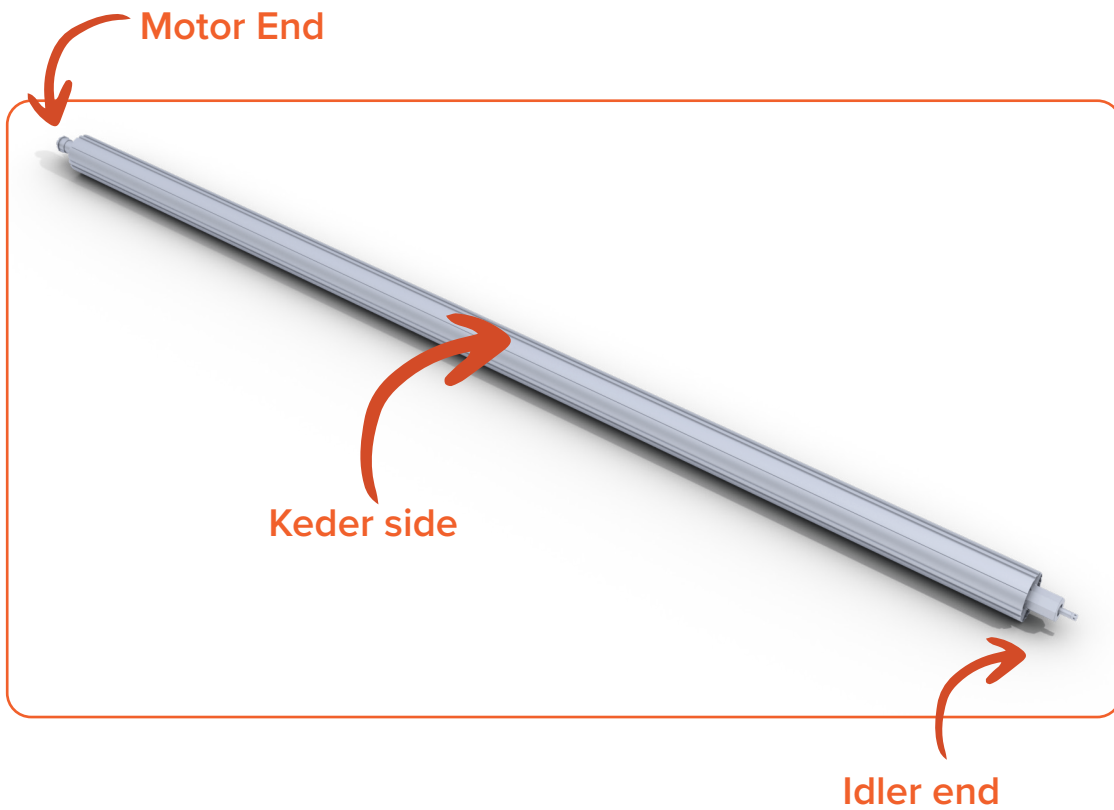
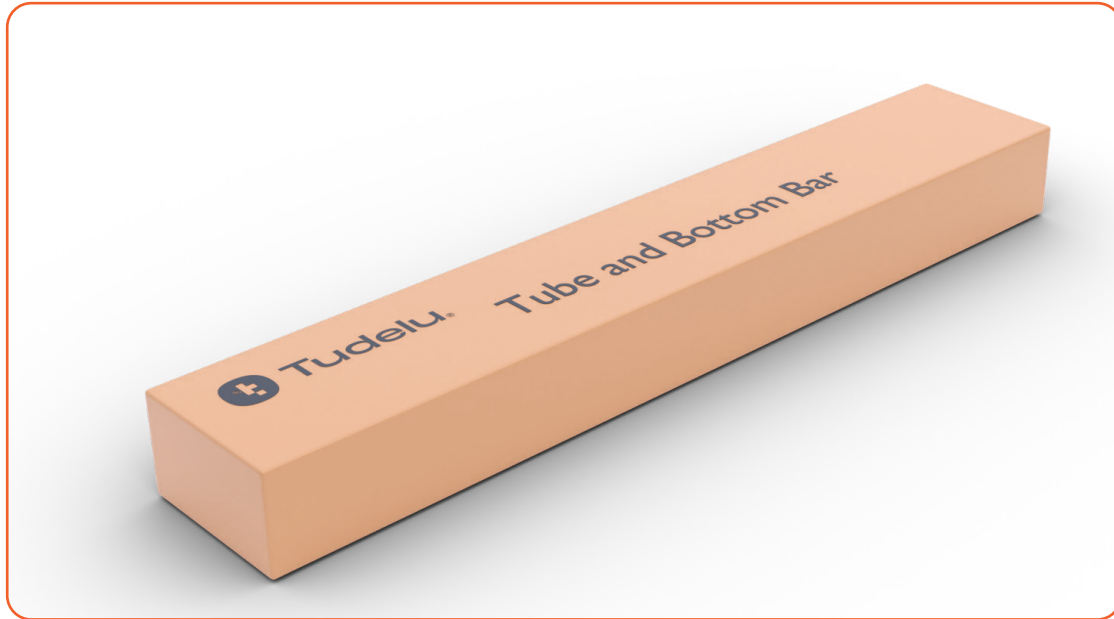


Double check both sides using a laser and a tape measure



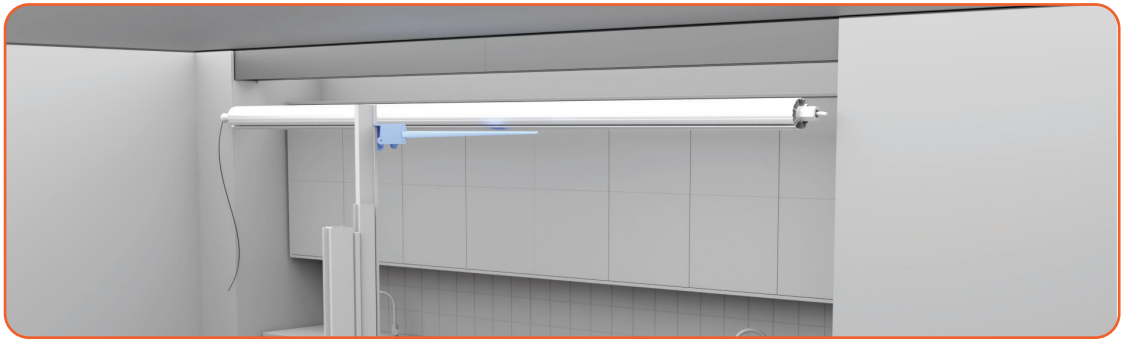
Make sure there is no space between housing units

## TUBE UNIT: INSIDE THE BOX



## TUBE: INSTALLATION

### INSTRUCTIONS



Use material lift to raise tube to housing system



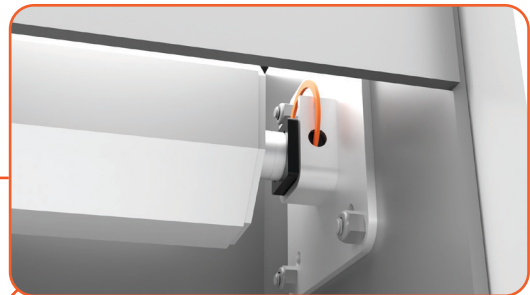
Insert motor end of tube into the motor bracket



Insert pin to secure the tube  
**NOTE: Make sure the wire is not stuck in the pin**



Insert idler end of tube into the idler bracket



Insert pin to secure the tube



Secure the wire by sliding the motor end of the tube all the way into the motor bracket

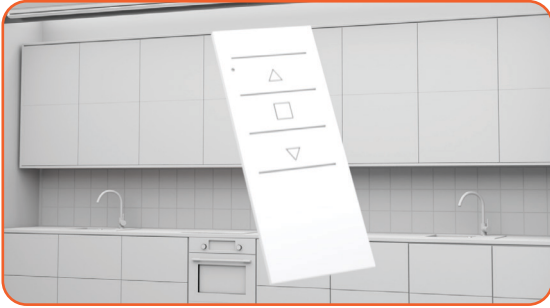


Connect wire to the rooms electricity

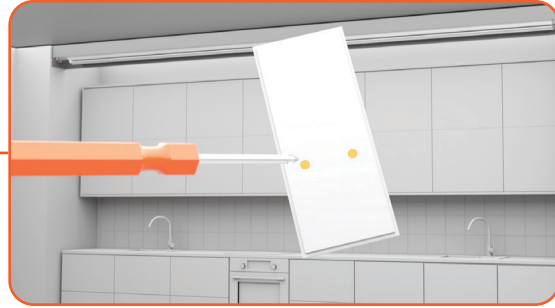
**NOTE: If you want the wire to hang on the side of the housing, bring it to the side now. Otherwise, leave the wire in the back**

## REMOTE CONNECTION

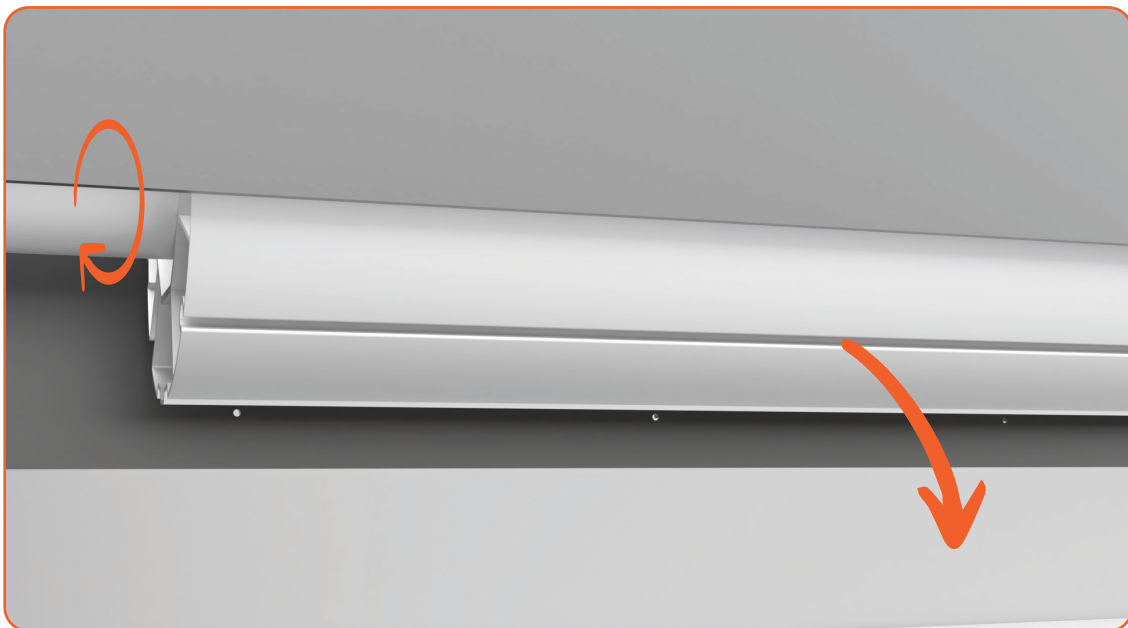
### INSTRUCTIONS



Hold the remote facing housing unit

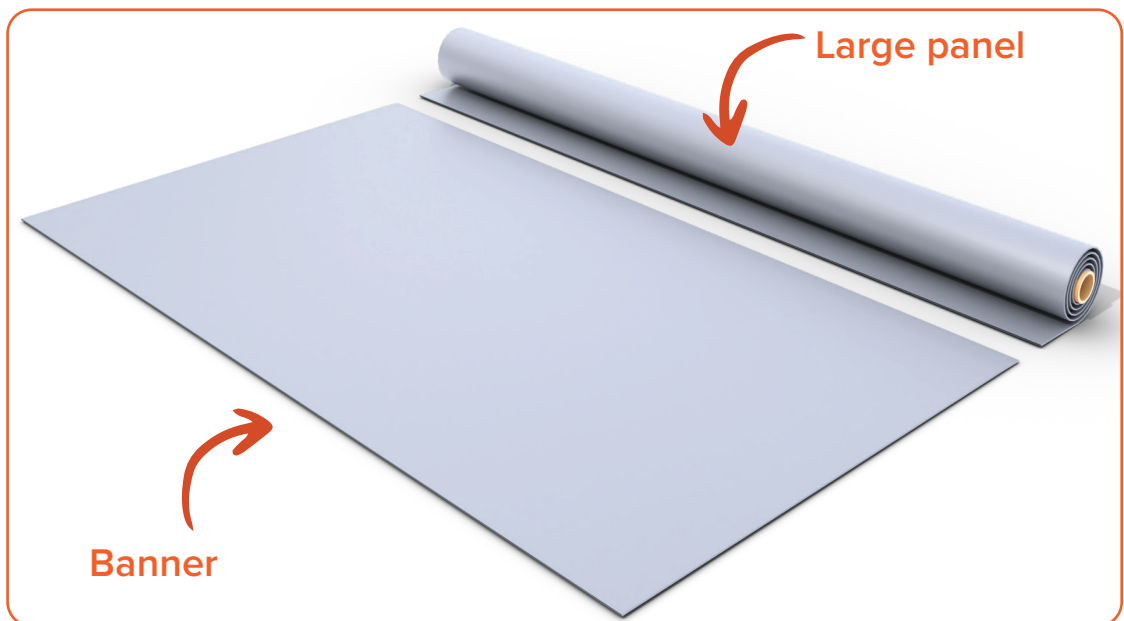


Turn remote over and use a screwdriver to press the left reset button for 6 seconds  
(motor will begin moving up and down)



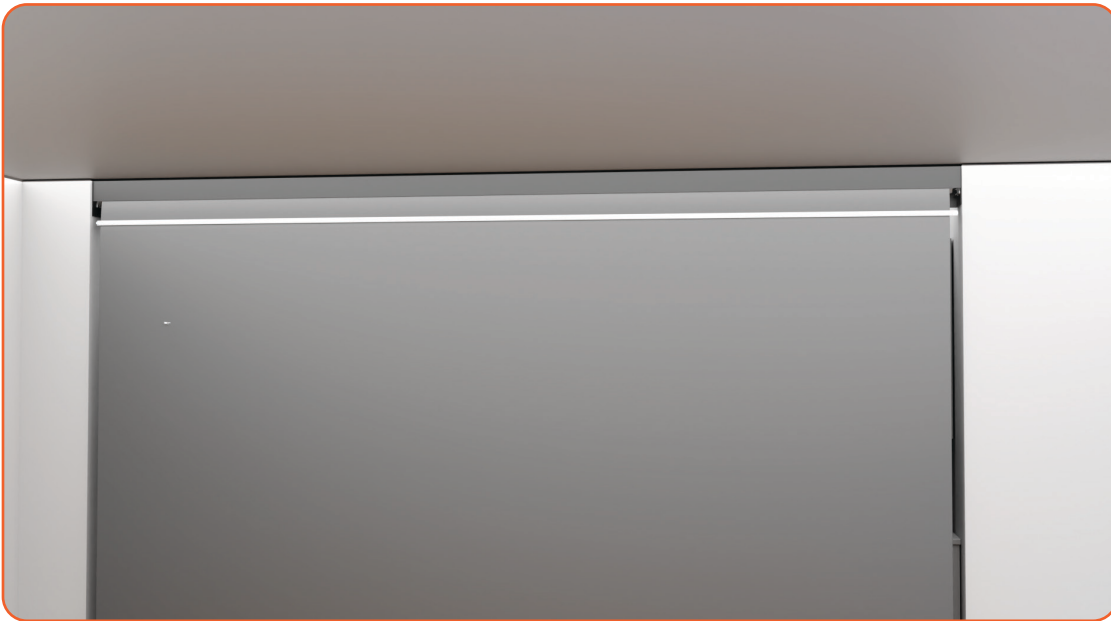
Use up and down buttons to bring keder side of tube to the bottom (facing the floor)

## WALL PANEL: INSIDE THE BOX



## WALL PANEL: INSIDE THE BOX

END RESULT



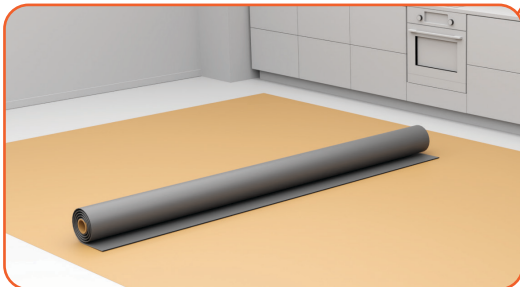
### INSTRUCTIONS



Raise banner to housing unit  
**NOTE: Banner should be in middle of the housing not the tube**



Slide banner into keder side of tube  
**NOTE: Zipper must be hanging down**



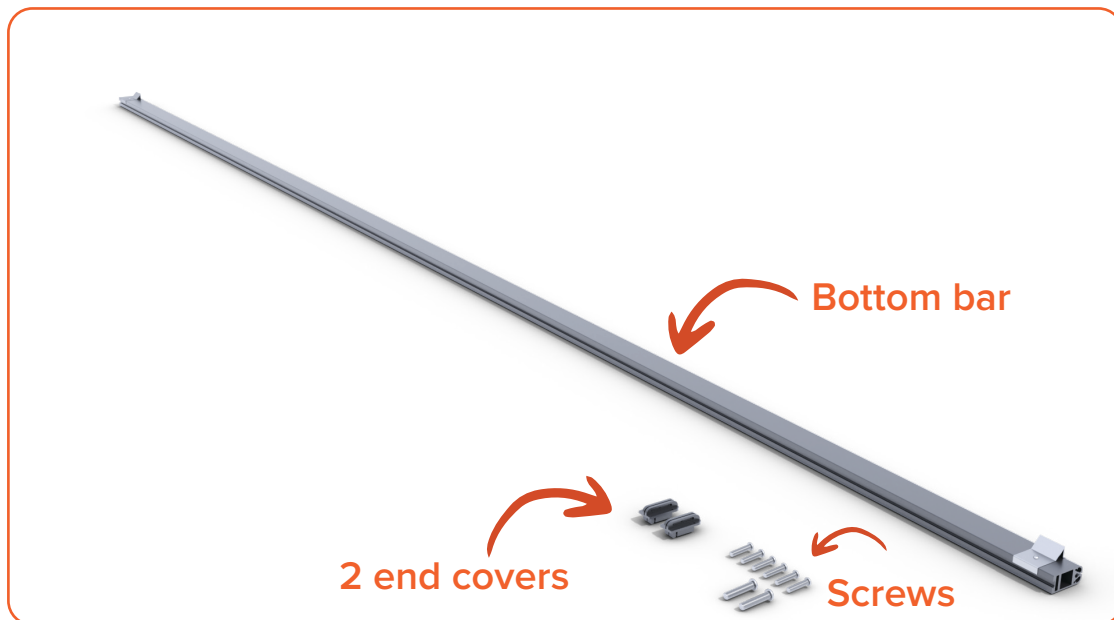
Put material (Or brown paper) on the floor and place large panel on top



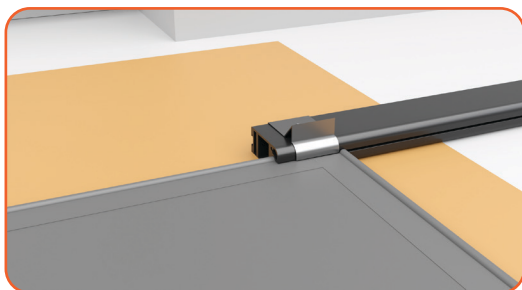
Roll out wall panel and place roller on the keder side

**NOTE: Before lifting panel you are going to insert bottom bar (see next page)**

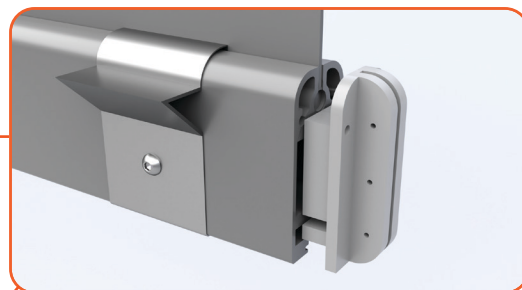
## WALL PANEL: INSTALLATION



### INSTRUCTIONS



Slide bottom bar into keder side of large panel



Push end covers into either sides of the bottom bar

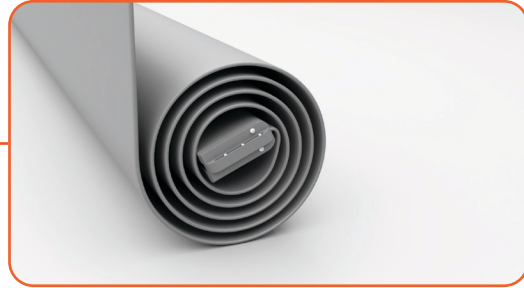


Insert screws to connect end covers to bottom bar

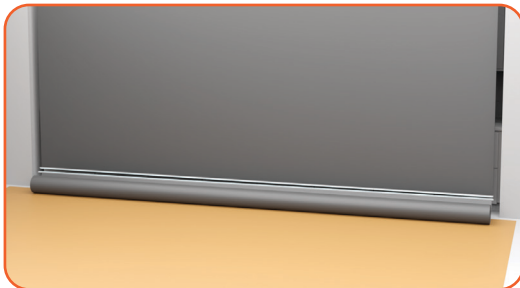


Make sure keder is in between end covers and screw end covers together

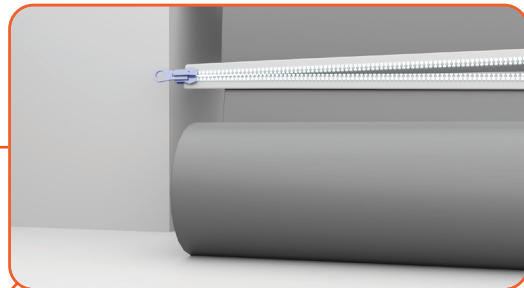
## WALL PANEL: INSTALLATION



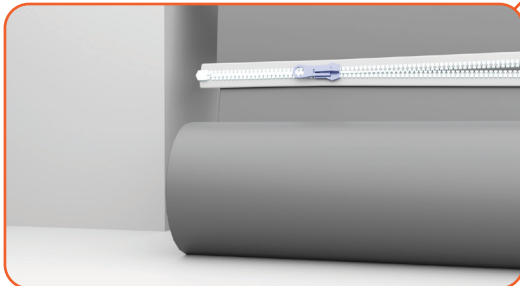
Use roller to roll large panel from keder side



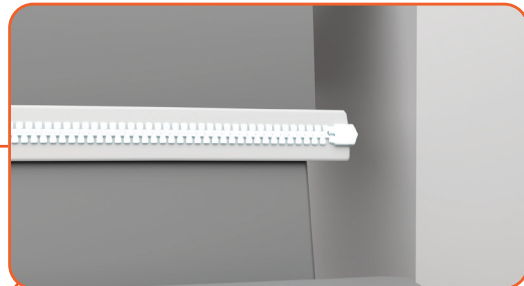
bring the wall panel to the banner  
and start zipping



Start zipping large panel to small  
panel



insert stopper in beginning to  
secure connection



Zip all the way and insert stopper at  
the end

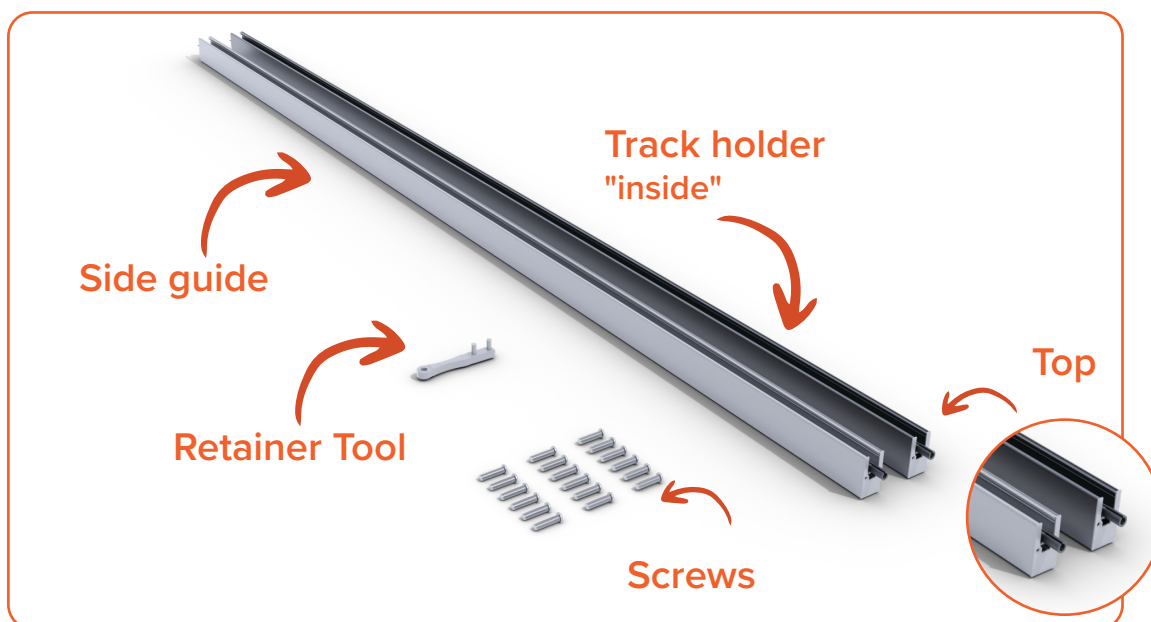
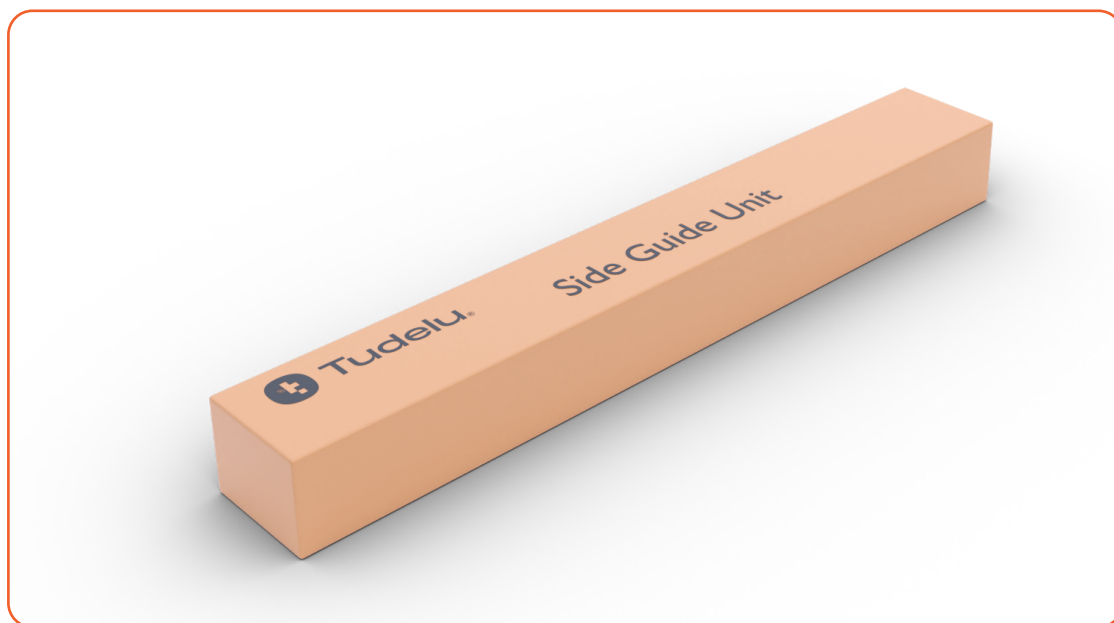


Roll up the wall panel before  
screwing the banner to the tube



screw banner to the tube

## SIDE GUIDE: INSIDE THE BOX



When cutting make sure to cut from the bottom

## SIDE GUIDE: INSTALLATION

### INSTRUCTIONS



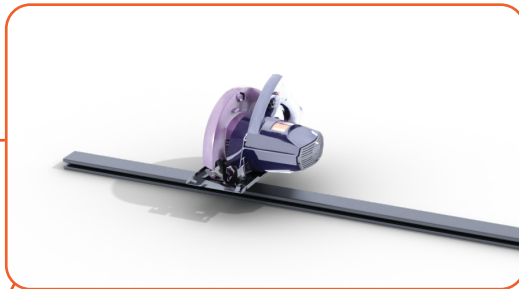
Use tape measure to measure exact height from floor to bracket (which is inside the end of the housing)



Remove track holders from side guides



Use metal on the side guide to detect where the magnets are  
**NOTE: This is extremely important!**



Use saw to cut side guides from the bottom to correct size - making sure to avoid magnets



Make sure to measure from after the plastic



Use saw to cut track holders from the bottom to the correct size

Before cutting make sure the magnets on the side guide is aligned with the magnets on the track holder (Magnets could be moved if needed)

## SIDE GUIDE: INSTALLATION



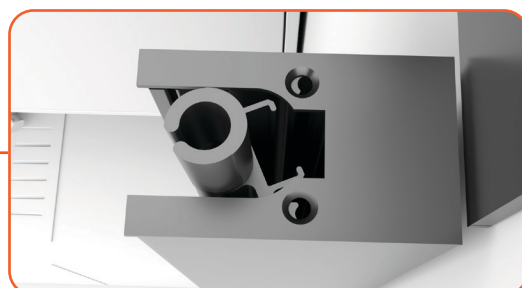
Lift side guides against either side of wall



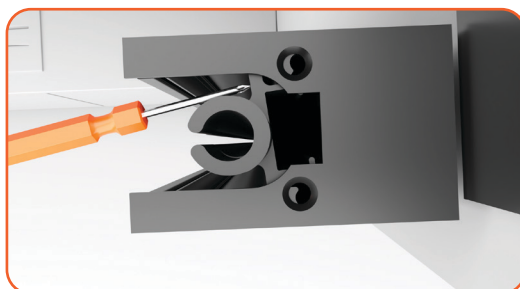
Make sure side guides are leveled and perfectly aligned with walls



Insert screws into side guide and screw into wall



side track holder into side guides horizontally



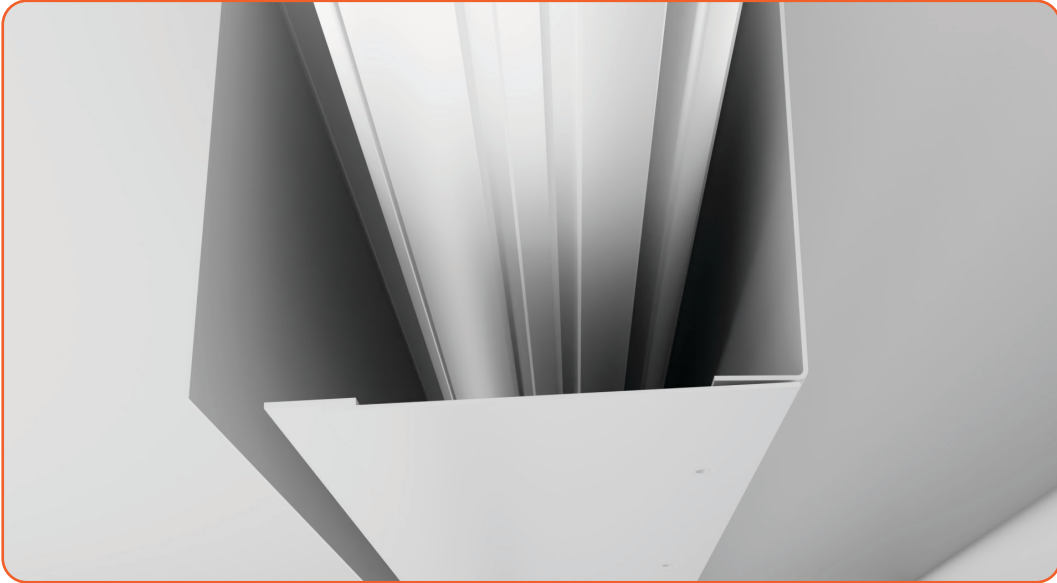
Use screw driver to prop track holders up



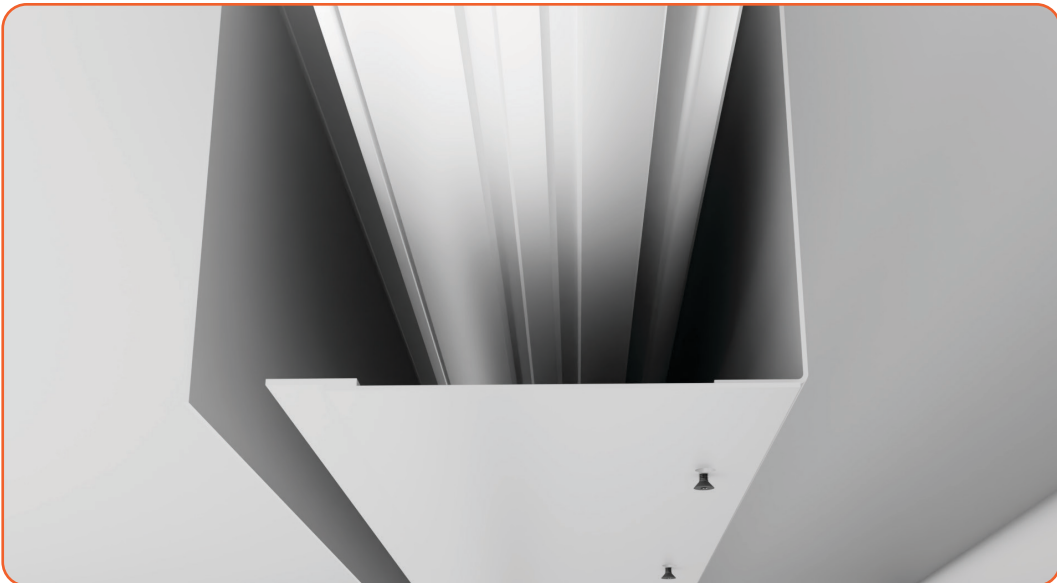
Insert side of wall panels into track holders

# HOUSING COVER : INSTALLATION

## INSTRUCTIONS

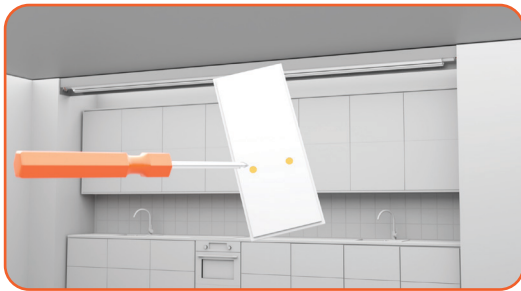


Slide housing covers into bottom of housing unit

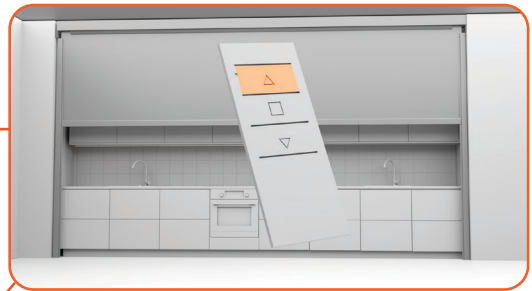


Slide housing covers into bottom of housing unit

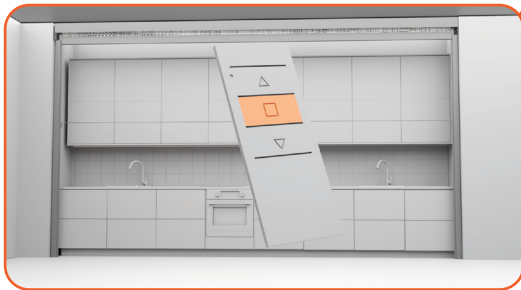
## MOTOR LIMITS



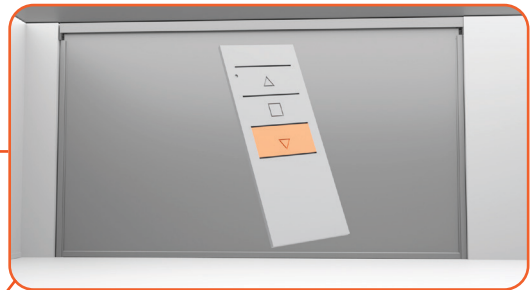
Use a screwdriver to press reset button for 6 seconds



Use up button to raise wall panel until desired height limit



Hold stop button for 5 seconds



Use up button to lower wall panel to desired height limit



Hold stop button for 5 seconds



insert screws to connect remote holder into wall



insert remote into the remote holder



place remote holder cover

# MOTOR LIMITS

## Gaposa Motor Programming

1. "Press and hold the SYNC button (left button on back) until the motor moves, check the direction and release the programming button, the motor will stop. "
2. "To synchronize the motor with the transmitter, press UP or DOWN. If in the previous step, the motor moved up, press the UP button. If in the previous step, the motor moved Down, press the DOWN button.

### Transmitter is now programmed to the motor

3. Press and Hold the LIMIT button (right button on the back of the transmitter) until the motor makes a jog (a brief up and down Movement).
4. "IMPORTANT: THE "UP" LIMIT MUST ALWAYS BE SET FIRST  
Press and hold the UP button until the "UP" limit is reached. "
5. When the "UP" limit is reached, press the STOP button. The motor will jog.
6. Press and hold the DOWN button until the "DOWN" limit is reached.
7. When the "DOWN" limit is reached, press the STOP button. The motor will jog.

### Limit Program is Now Complete. The motor will operate normally

#### Notes

- Remember the direction the motor has moved. That Information is needed for the next step.
- If the Direction of rotation is incorrect, it will need to be corrected before the limits are set.
- when in limit setting mode the motor operates in deadman control, meaning you must press and hold UP button to get the motor to move.
- The "UP" limit is set when the motor jogs.
- when in limit setting mode the motor operates in deadman control, meaning you must press and hold DOWN button to get the motor to move.
- The "UP" limit is set when the motor jogs.

## MOTOR LIMITS

### To Change UP/DOWN Direction

Press and hold the SYNC button (left button on back) until the motor moves and then Press the Stop Button.

### To Reset ONLY The UP Limit

Press and hold the Limits button (Right button on back) and UP Button at the same time until the Motor Jogs

Set The UP Limit And then Press the Stop Button, The motor will Jog Again.

Now your Up Limit is Now Set.

### To Reset ONLY The Down Limit

Press and hold the Limits button (Right button on back) and DOWN Button at the same time until the Motor Jog

Set The DOWN Limit And then Press the Stop Button, The motor will Jog Again.

Now your DOWN Limit is Now Set.

### What To Do If The Motor Is Over Heated

Wait until the Motor Cools Down (Approximately 25-35 Minutes)

After Waiting, It should Operate Perfectly

### What To Do If The Motor Isn't Responding

If the Motor is Not Responding at All, Not Even With The Remote. Then It Will Need To Be Hard Reset Manually.

To Hard Reset The Motor, You Need To Press The Reset Button On The End Of The Motor until the Motor Response and Jogs.  
(The Reset Button is a White Button At The End Of The Motor)

After Doing So, The Motor Will Need To Be Re- Programmed.  
(Follow The Programming Steps)

CONGRATULATIONS ON YOUR MASTERPIECE!

View with partition raised



View with partition lowered

