

Installation Manual



SYSTEM:

MUTE

CROSS/DROP SECTION METHOD

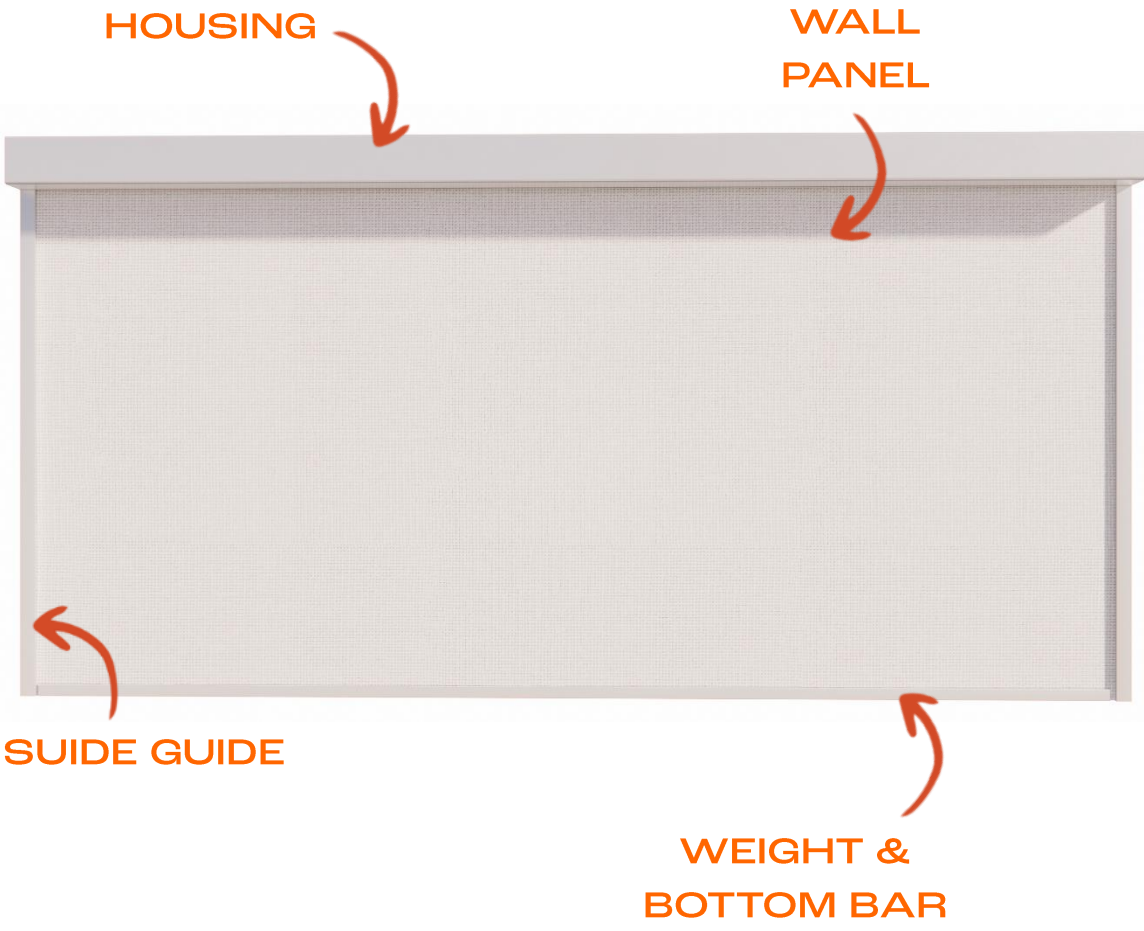


Tudelu®

TABLE OF CONTENTS

MEET THE SYSTEM	3
PRE-INSTALLATION CHECKLIST:	
- BOXES	4
- TOOLS	5
- ROOM	6
HOUSING INSTALLATION:	
- INSIDE THE BOX:	
- BEGINNING UNIT	8
- MIDDLE UNIT	9
- END UNIT	10
- ASSEMBLY	11
- INSTALLATION	12
- ROLLERS	15
- MOTOR:	
- INSIDE THE BOX	16
- TUBE:	
- ASSEMBLY	17
- INSTALLATION	18
WALL PANEL UNIT:	
- INSTALLATION	21
WEIGHT & BOTTOM BAR UNIT:	
- INSIDE THE BOX	24
- INSTALLATION	25
SIDE GUIDE:	
- INSIDE THE BOX	27
- ASSEMBLY	28
- INSTALLATION	31
UNDER HOUSING COVER:	
- INSIDE THE BOX	33
- INSTALLATION	35
CONTROL BOX:	
- INSTALLATION	36

MEET THE SYSTEM



PRE-INSTALLATION CHECKLIST

Before getting started, complete the following checklists to ensure you are set for installation:

1. Boxes checklist
2. Tools checklist
3. Room checklist

CHECKLIST #1 : BOXES

Make sure you received your full order.



Starting Unit



Intermediate Units (Amount varies)



Ending Unit



Motor Unit



Wall Panel Units



Weight and Bottom Bar Units (amount varies)



2 Side Guide Units

*Amount depends on the length of your specific system

CHECKLIST #2 : TOOLS

These are the tools you'll need to install your system:



Wrenches

Socket / Wrench:
7/16 +
3/8 +
9/16



**Phillips # 2 &
Flat screwdriver
& angle screwdriver**



Drill bits



Tape measure



Utility knife



Stapler



Leveler



Extension Cord



Laser



**Saw
Or Band Saw
With aluminum blade**



Material Lift



Drill



**2 Ladders and
Scaffolding**



Plier



Duct Tape



Rubber Mallet



Hammer



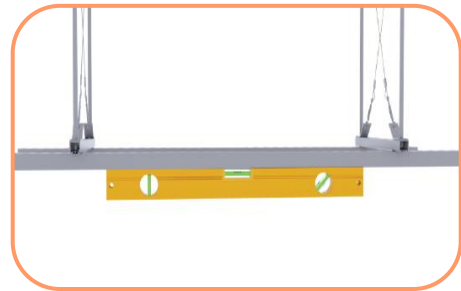
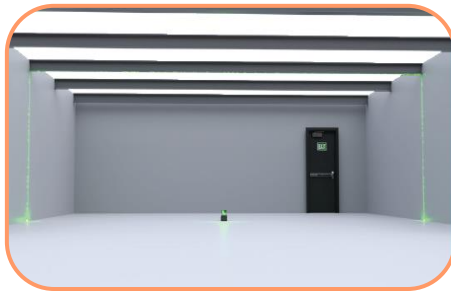
Triangle square



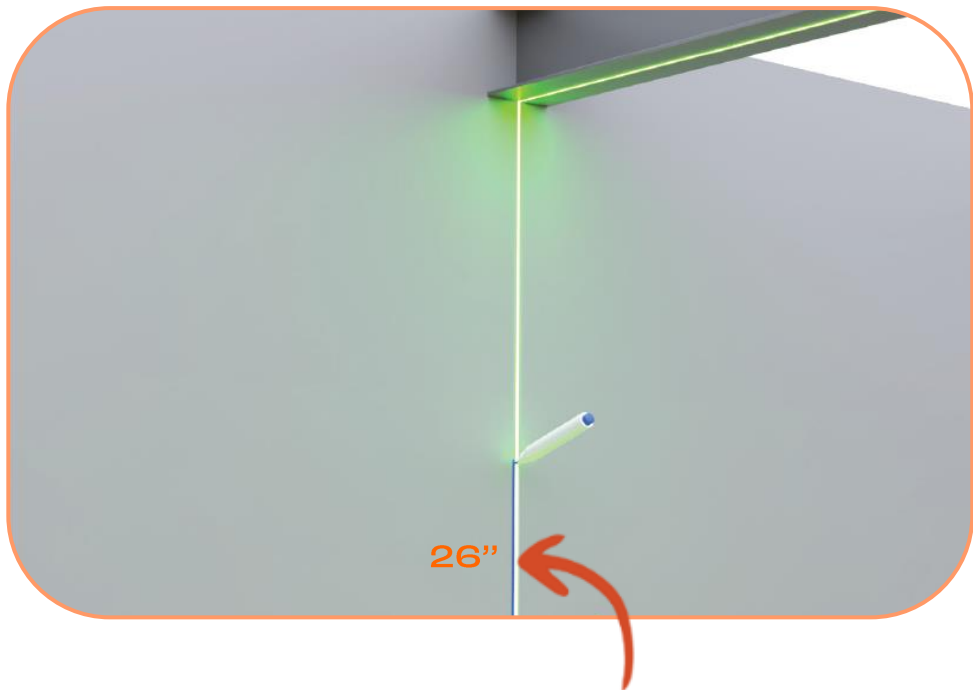
Allen Key

CHECKLIST #3 : ROOM

- A. Make sure you have power to operate your tools and the system
- B. Ensure the power is a convenient location
- C. Clear the room for installation
- D. Use the laser to check that the structural support is leveled



- E. Mark both sides of the wall



This is where the side tracks will go

CHECKLIST #3 : ROOM

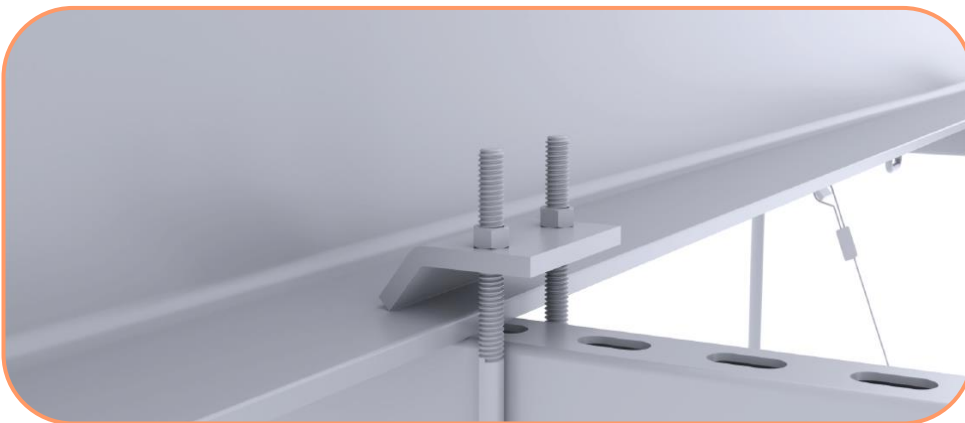
- F. Verify once more that the system you ordered and the room measurements match



- G. Mark 26" on the ceiling
(this is where the system will be installed)



- H. If installed on a drop, ensure that each nut and bolt is firmly tightened



- I. Make sure structure location are at 16-18' apart connecting unistrut

HOUSING INSTALLATION : INSIDE THE BOX

BEGINNING UNIT – HM1066



Beginning housing frame



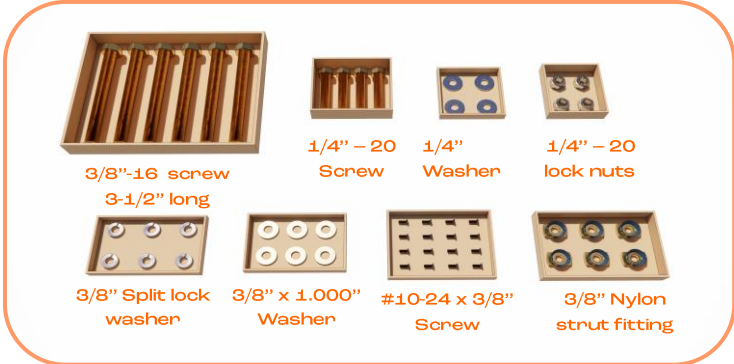
2 Tubes



Under-housing covers and access panels



3 sets of rollers



3/8"-16 screw
3-1/2" long

1/4" - 20
Screw

1/4"
Washer

1/4" - 20
lock nuts

3/8" Split lock
washer

3/8" x 1.000"
Washer

#10-24 x 3/8"
Screw

3/8" Nylon
strut fitting

Bolts, Washers and screws

HOUSING INSTALLATION : INSIDE THE BOX

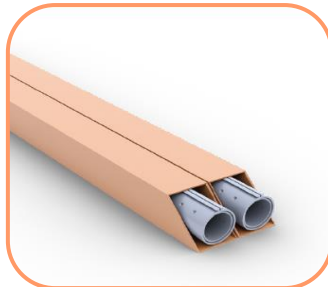
INTERMEDIATE UNIT – HM1060



Each Middle Unit box contains:



Intermediate housing frame



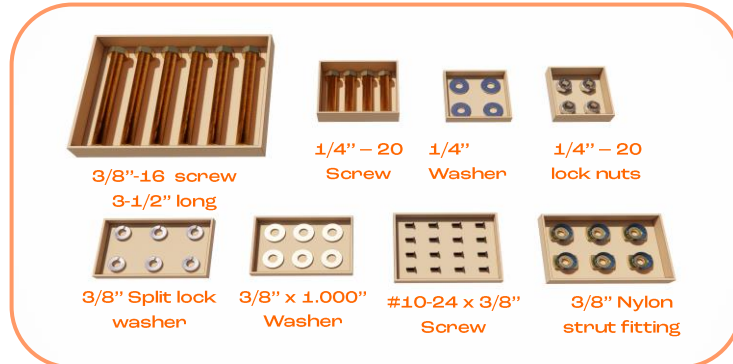
2 Tubes



Under-housing covers and access panels



3 sets of rollers



Bolts, Washers and screws

HOUSING INSTALLATION : INSIDE THE BOX

END CAP



End Cap



HOUSING INSTALLATION : ASSEMBLY

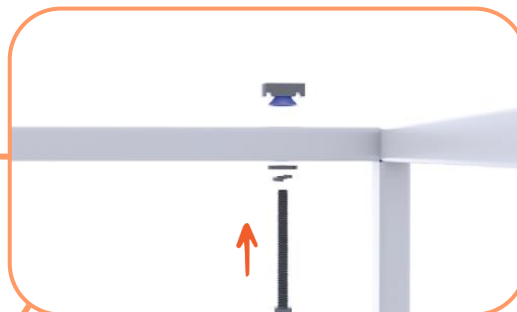
Follow the instructions that are relevant to your system and refer to the mini manual for more information



CROSS/DROP SECTION



Disconnect the screws from the housing

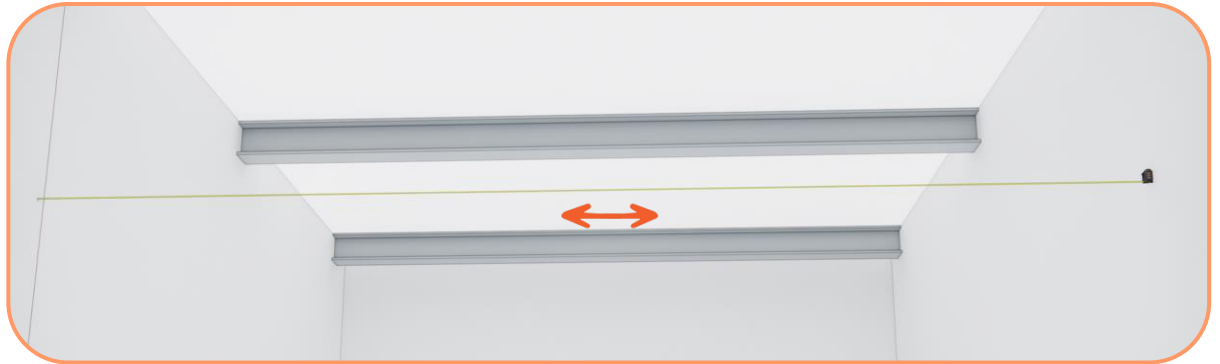


Insert the screws and washers into the housing



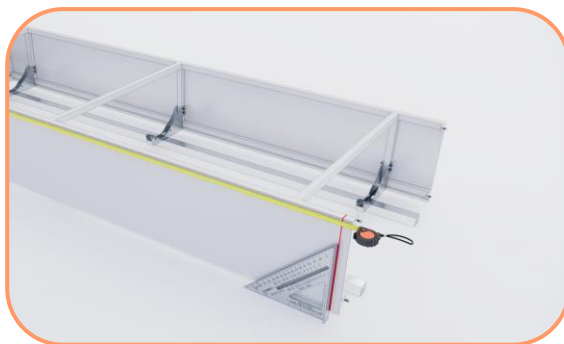
Connect all 6 screws

HOUSING INSTALLATION : INSTALLATION

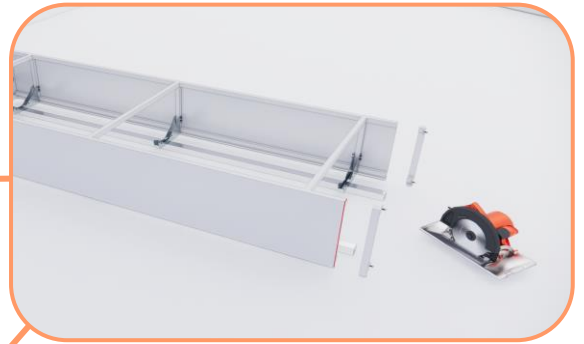


Measure the distance between the walls

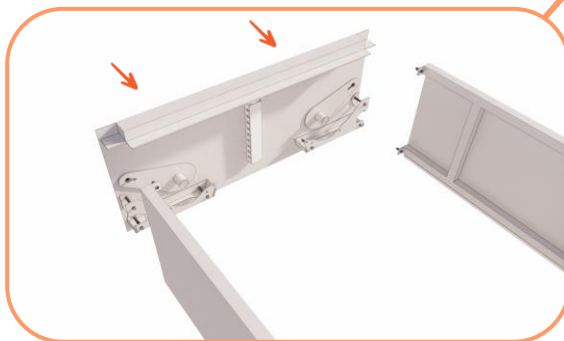
NOTE: There should be a 1/8 inch setback between the wall and the end of the housing at both sides



Measure the end housing. Using a triangle, mark-up the excess to be cut



Start cutting the excess using a circular saw

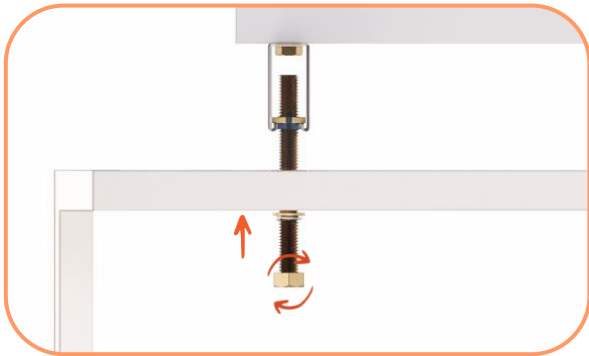


Slide end cap and push in



Use the material lift to raise the first housing unit

HOUSING INSTALLATION : INSTALLATION



Push the screw clamp in and rotate

Note: Do not tighten the screw all the way



Repeat the previous steps to install the middle housing frame/s

Note: Make sure housing is against the wall with no extra space.

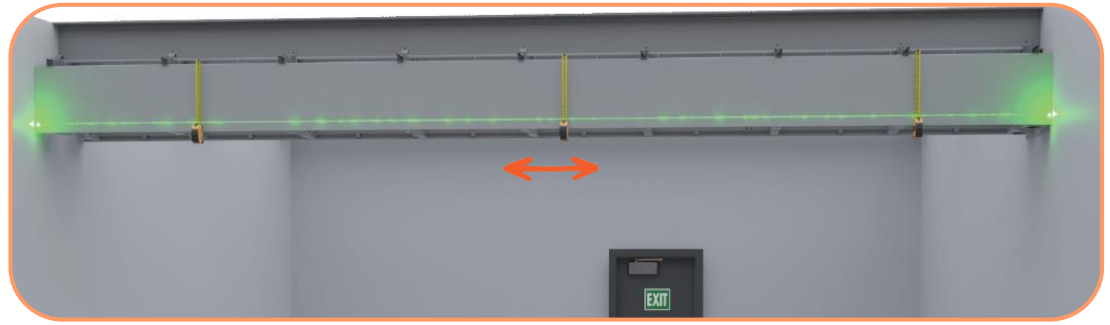


Repeat the previous steps to install the ending housing frame

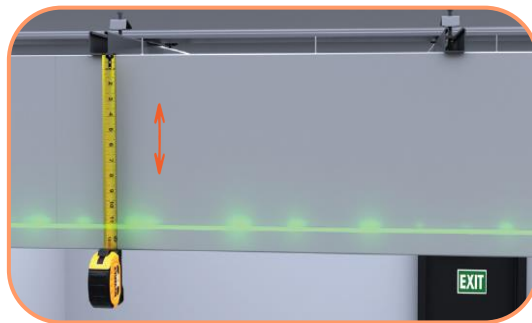


Observe a 1/8 inch setback from the wall

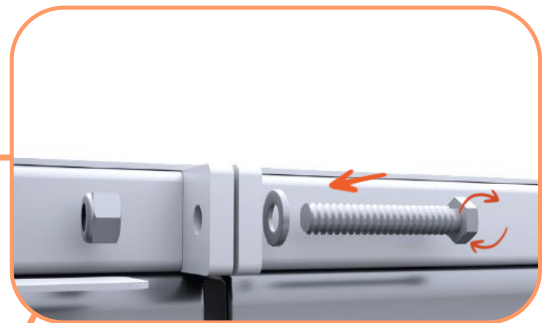
HOUSING INSTALLATION : INSTALLATION



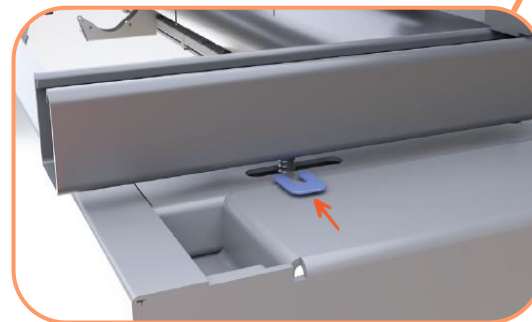
Project a laser beam across the housing. If it isn't leveled, use the laser's lowest point as a guide to level the housing



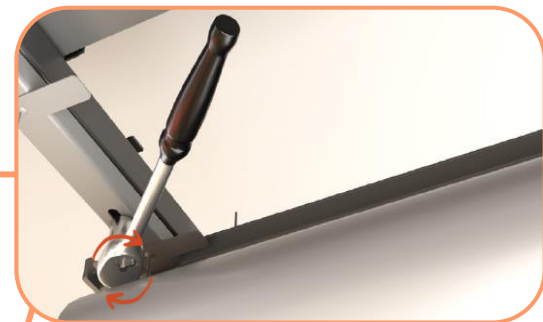
Check all 4 corners of each housing to ensure they are all leveled



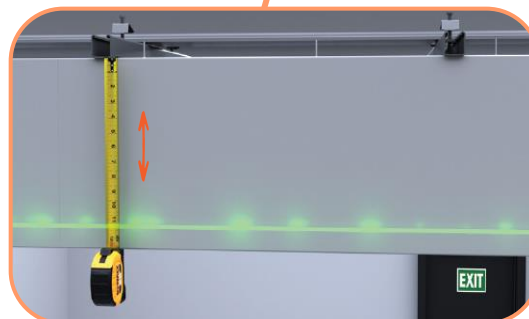
Join each housing unit together



If needed insert a shim to lower the housing



Tighten the screws that connect the housing to the unistrut



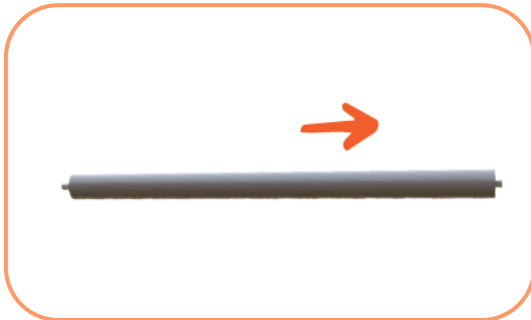
Use laser again to ensure all the housing is leveled

HOUSING INSTALLATION : ROLLERS

END RESULT



INSTRUCTIONS



All rollers should be facing the same way



Note: Only one side could be pushed in



Insert the rollers and click into the arms

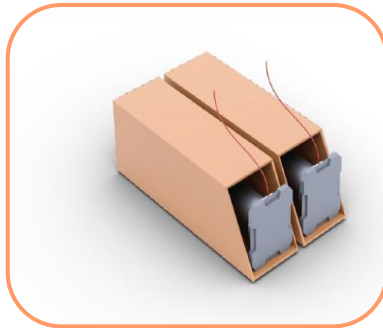
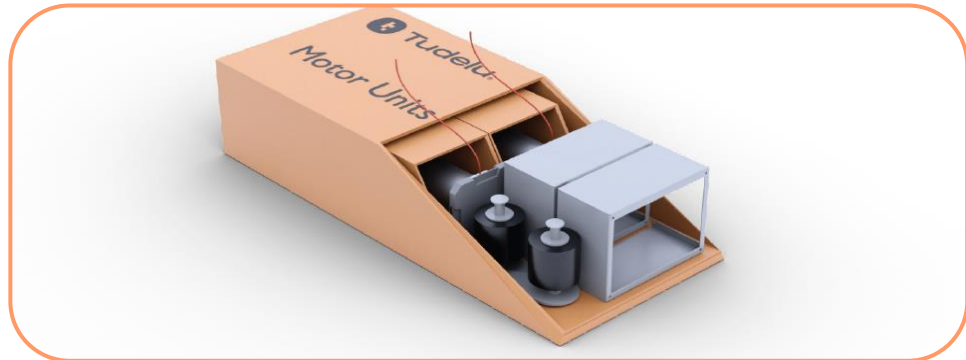


Repeat on the other side

NOTE: When opening and unraveling the rollers, start with the beginning until and continue next to the intermedium until followed by the last unit.

MOTOR UNIT : INSIDE THE BOX

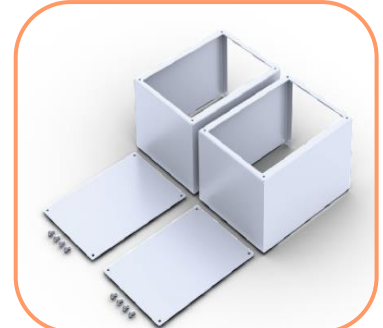
MOTOR UNIT HM1138



2 Motors



2 Idlers



2 Access box

CONTROL BOX



Push
definition



Cables

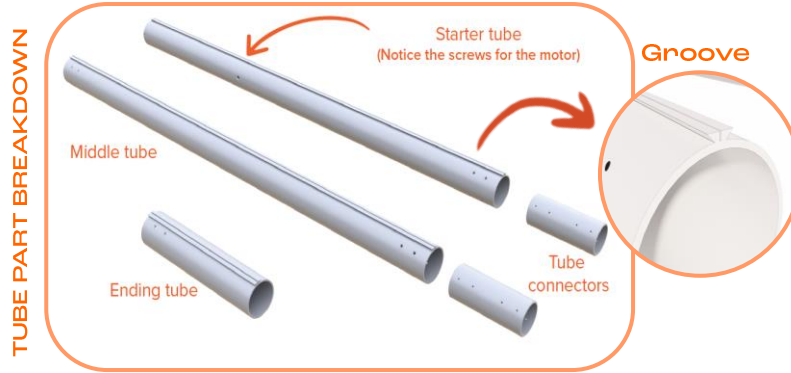


Switch



Control
box

HOUSING INSTALLATION : TUBE ASSEMBLY

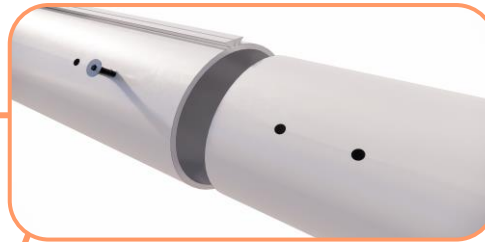


INSTRUCTIONS

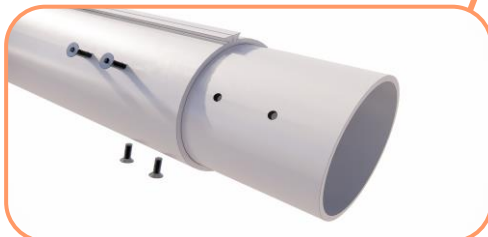


Connect the motor to the starter tube

Note: The screws connecting the motor are different than the screws connecting the tubes to the connectors



Connect the starter tube to the tube connector



Push the tube connector halfway to secure



Connect the middle tube to the other end of the tube connector

HOUSING INSTALLATION : TUBE ASSEMBLY



Repeat until all the tubes are connected



Measure wall to wall



Measure the length of the tube based on the wall's measurement and prepare to cut out the excess and 3"



Cut out 3" together with the excess length



Insert the idler to secure the system
Insert tape so that the idler does not move

Note: Make sure it is the correct size

Note: Add tape during installation to stop it from slipping

HOUSING INSTALLATION : TUBE INSTALLATION

INSTRUCTIONS



Use the material lift to raise the connected tubes to the housing system



Lift the tubes to the center of housing

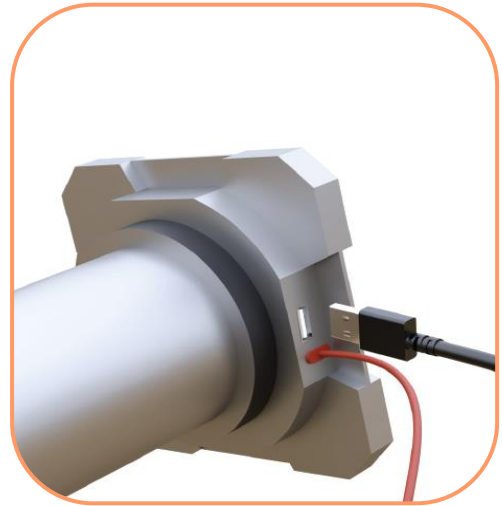


Push the tubes into the arms on both sides

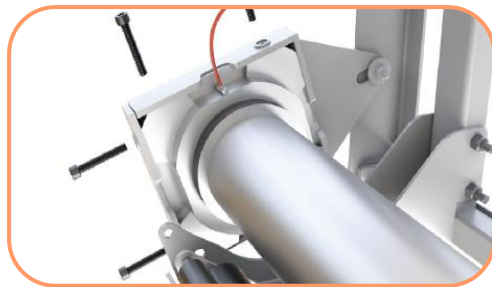
HOUSING INSTALLATION : TUBE INSTALLATION



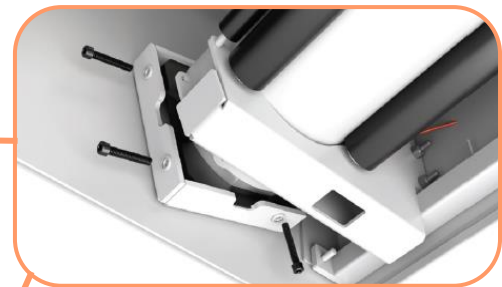
Ensure that the limit adjusters are on the bottom of the housing (facing the floor)



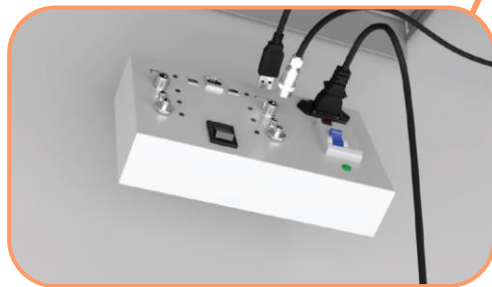
Connect the second wire



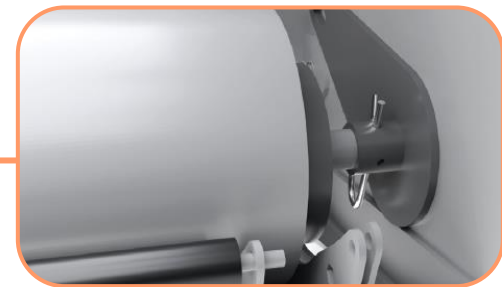
Remove the screws and insert the motor into the motor connector (make sure it's all the way in)



Insert and tighten the screws



Connect the tube wire to the temporary connection and rotate the motor downwards



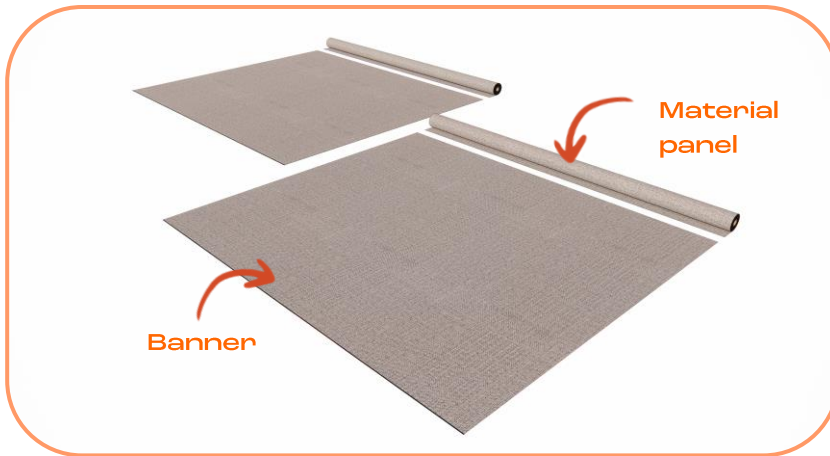
Connect the idler side of the tube and insert the pin to secure it

You can use the black flip switch for temporary operation and testing during assembly

Warning: Avoid toggling the control box frequently to prevent potential damage

WALL PANEL UNIT : INSTALLATION

INSTRUCTIONS



Wall panel unit



Prepare the banner and hook attachment

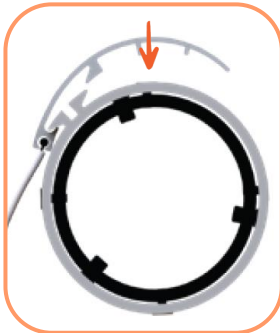
WALL PANEL UNIT : INSTALLATION



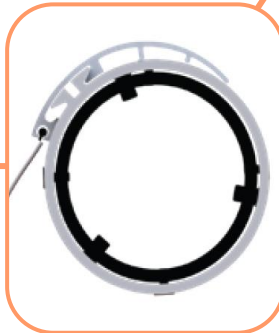
Slide the hook attachment to the keder side of the banner



Cramp the ends of the first attachment using a pliers



Press the hook attachment to lock



Slide the attachments and hook them to tube

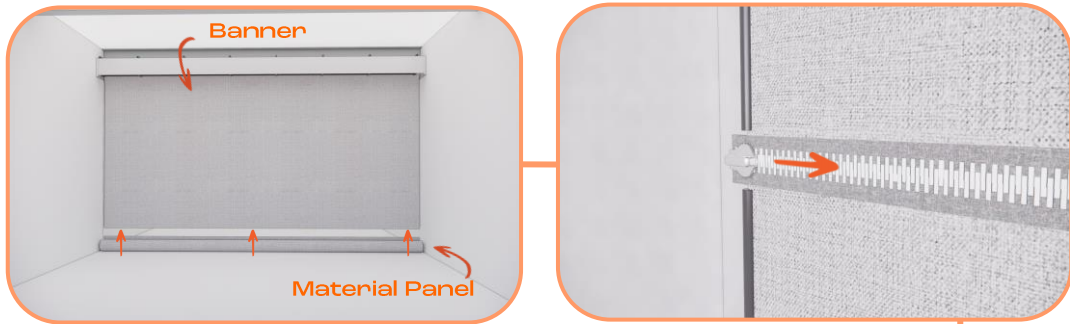


Repeat process



Measure a 3" setback both sides of the wall

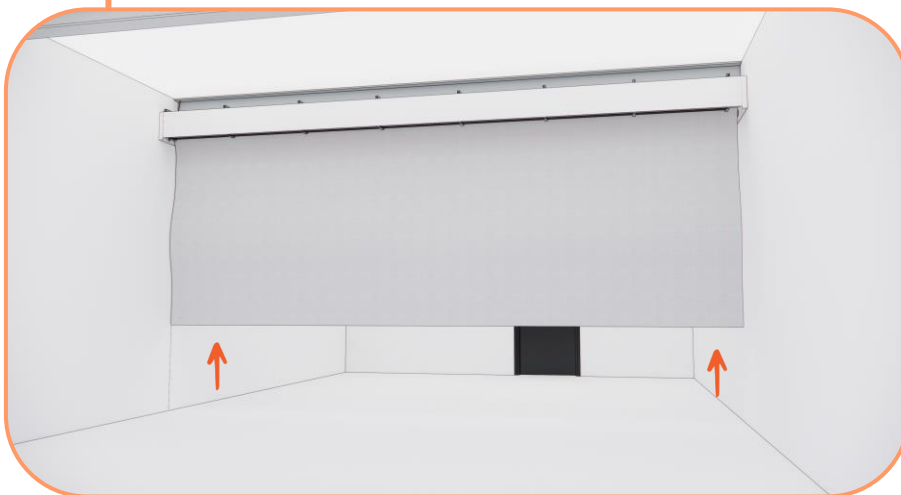
WALL PANEL UNIT : INSTALLATION



Lower the banner to the floor and zip material panel to banner and add stoppers



NOTE: If your system is more than 10ft in width, it is required to put three stoppers at each end and additional stopper every 3ft



Raise the wall system up

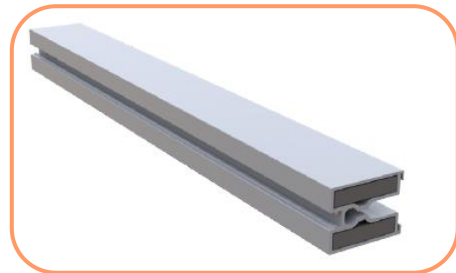
*Repeat the steps to install the other wall system

*Prepare 4 weight bars to be added

WEIGHT AND BOTTOM BAR : INSIDE THE BOX



2 Bottom bars



2 Weight bars



Bottom bar connectors
(Thick)



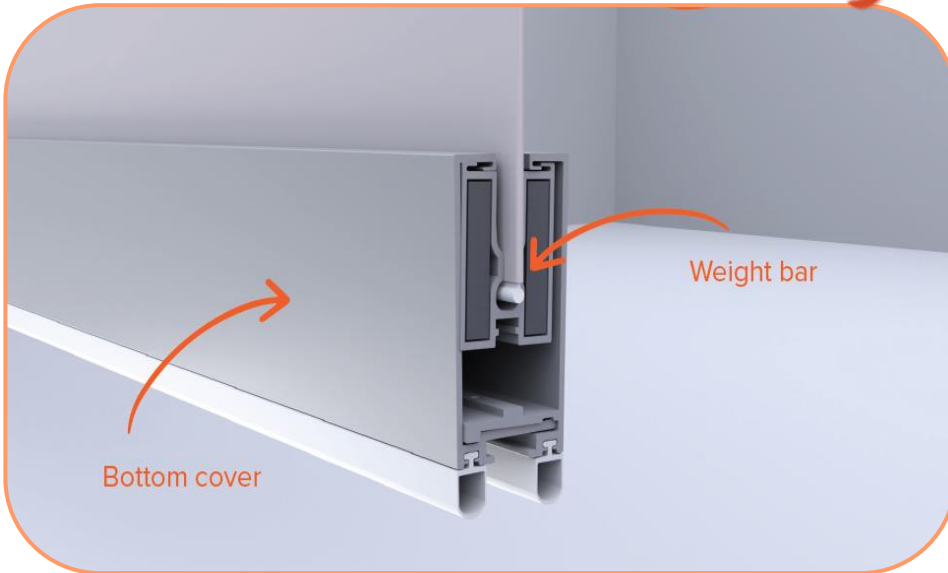
Weight bar connectors
(Thin)



Screws

WEIGHT AND BOTTOM BAR : INSTALLATION

END RESULT



Side view

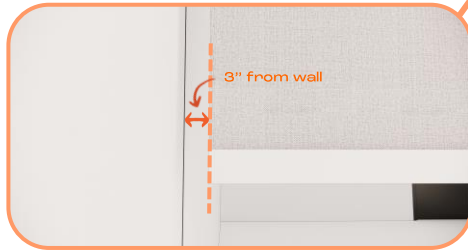
WEIGHT AND BOTTOM BAR : INSTALLATION



Raise the wall panels off the floor to make it easier to insert the bars



Slide the weight bar into the wall panel



Make sure to align the end of the weight bar to the wall panel



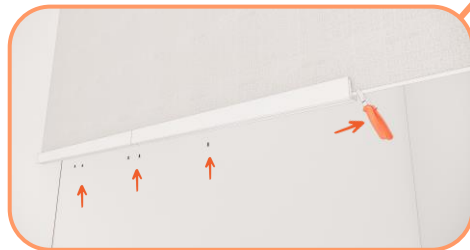
Insert the first screw at the beginning of the weight bar



Insert thinner connector halfway through the weight bar



Slide in second weight bar and prepare to stretch the wall panel

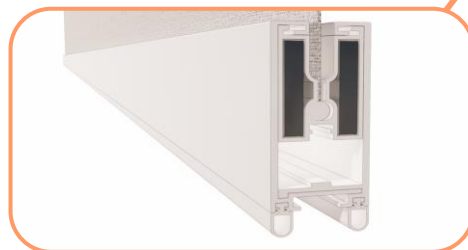


Stretch the wall panel against material using pliers and screw it into place

Note: screw the part where the connector is at place



Add thin connector and repeat until finished



Hook the covers to the weight bar



Insert thick connector and screw it into place

SIDE GUIDE : INSIDE THE BOX

SIDE GUIDE UNIT – GM1018



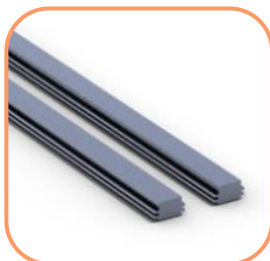
Side guide
extrusion



Aligners



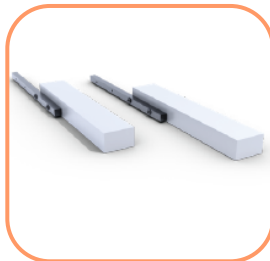
Connectors



SG-13 sensor
Transmitter
(ONLY IF CUSTOM ORDERED)



Rubben seal



Top attachment



Tools & screws

DO NOT REMOVE PROTECTIVE FILM UNTIL CONSTRUCTION IS COMPLETE

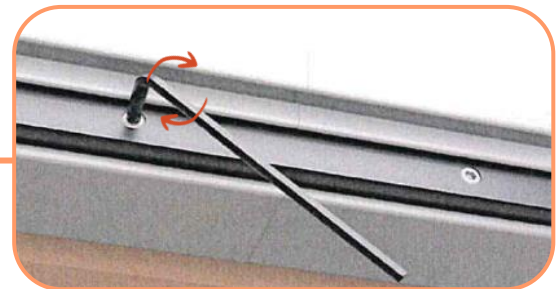
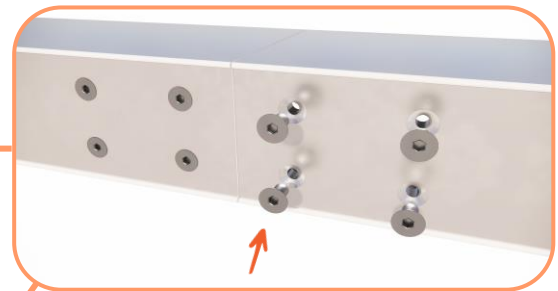
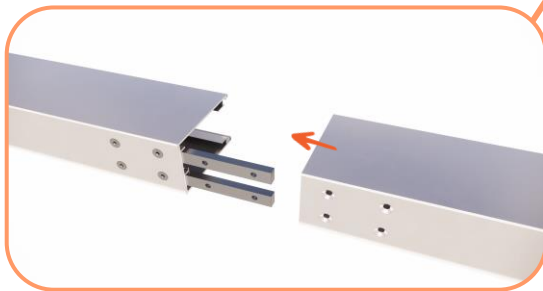
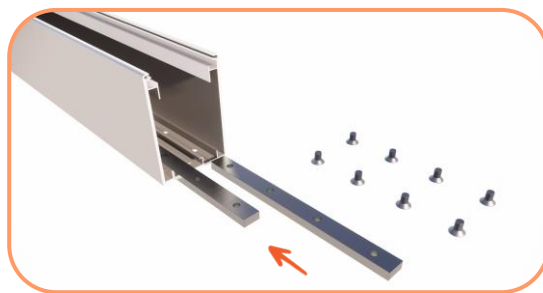
*this piece is ONLY available if ordered separately.

SIDE GUIDE : ASSEMBLY

END RESULT

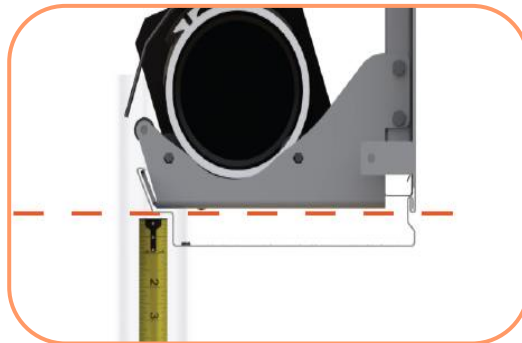
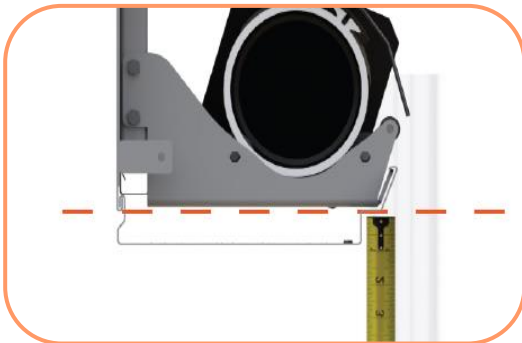
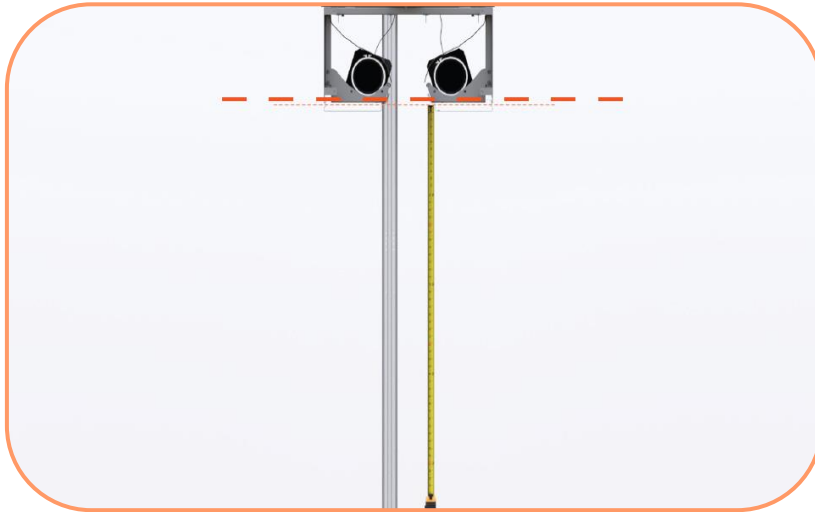


INSTRUCTIONS



SIDE GUIDE : ASSEMBLY

After assembling the side guides, measure the height from the housing to the floor and cut the side guides accordingly



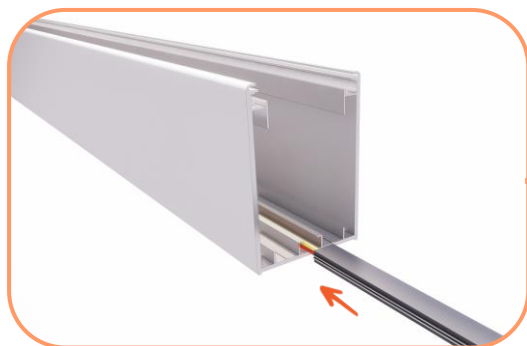
Insert the first housing cover temporarily to ensure the measurements are correct



cut side guide accordingly

SIDE GUIDE : ASSEMBLY

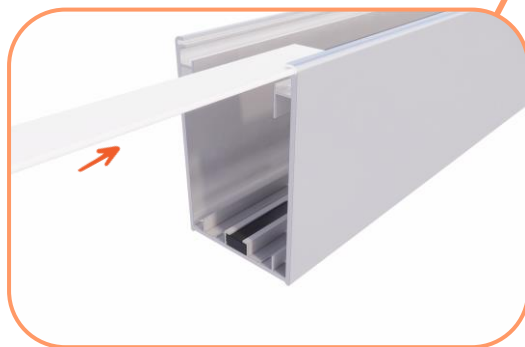
INSTRUCTIONS



* Insert an SG-13 sensor transmitter into to one track and receiver into the other
(ONLY IF CUSTOM ORDERED)
Note: Sensor should be facing up



To secure the wire, insert the raceway on top of the sensor cable from the top
(ONLY IF CUSTOM ORDERED)



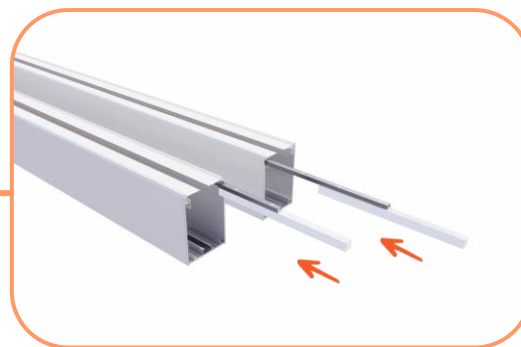
Slide the rubber seals into the side guide



Make sure the rubbers are facing inside



Press on both ends top and bottom to lock the seal in



Slide both top attachments on top of each system (facing inside)

* this piece is ONLY available if ordered separately.

SIDE GUIDE : INSTALLATION

INSTRUCTIONS



Insert the side guide into the middle of the housing



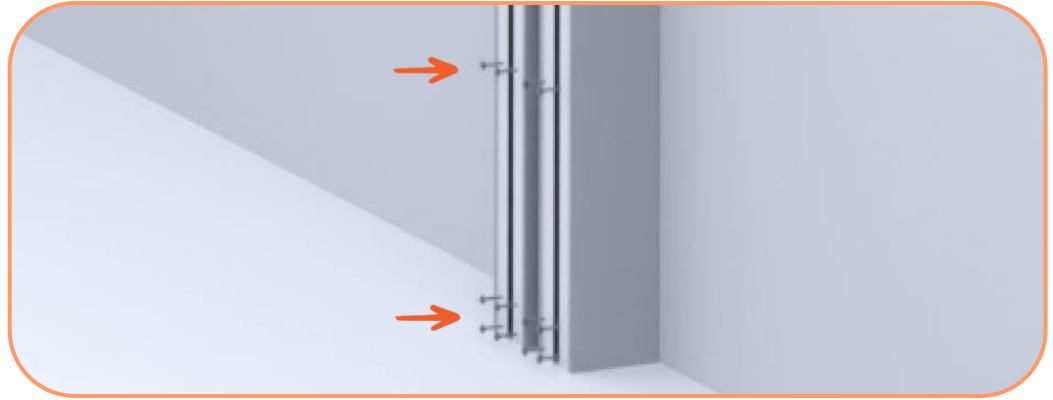
Push it against the wall



Use a level to make sure the front and side are leveled

NOTE: The side with the longer wire should go the opposite side of the motor

SIDE GUIDE : INSTALLATION

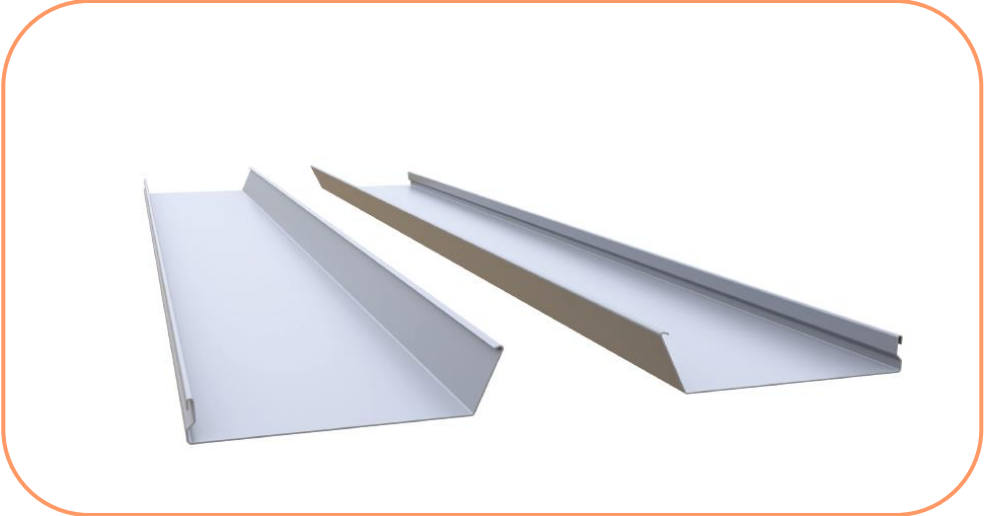


Insert the bolts into the side guide

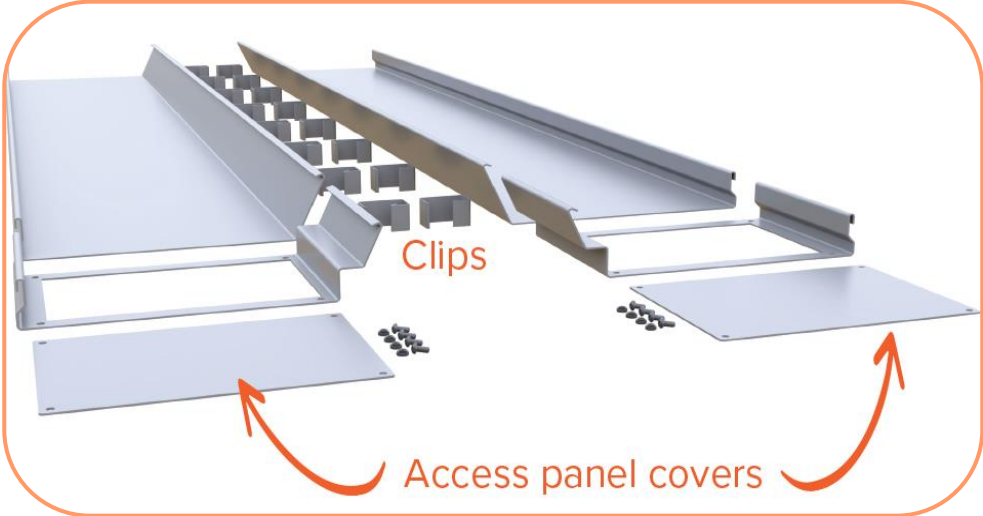


END RESULT

UNDER-HOUSING COVER : INSIDE THE BOX



Middle under-housing covers



Beginning/ending under-housing covers

NOTE: access cover screws all come in labeled bags

DO NOT REMOVE PROTECTIVE FILM UNTIL CONSTRUCTION IS COMPLETE

UNDER-HOUSING COVER : INSTALLATION

END RESULT



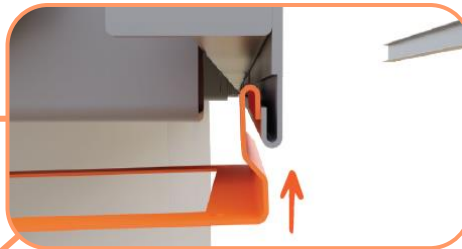
Side view of under-housing cover

UNDER-HOUSING COVER : INSTALLATION

INSTRUCTIONS



Hook the under-housing cover to the inside of the housing



Hook onto the other side



Insert the beginning under-housing access panel



Clip it in



Insert the smallest size (lengthwise) under-housing cover and clip it in



Repeat the previous steps for the rest of the under-housing covers



Insert the access panels covers in the beginning and ending housing

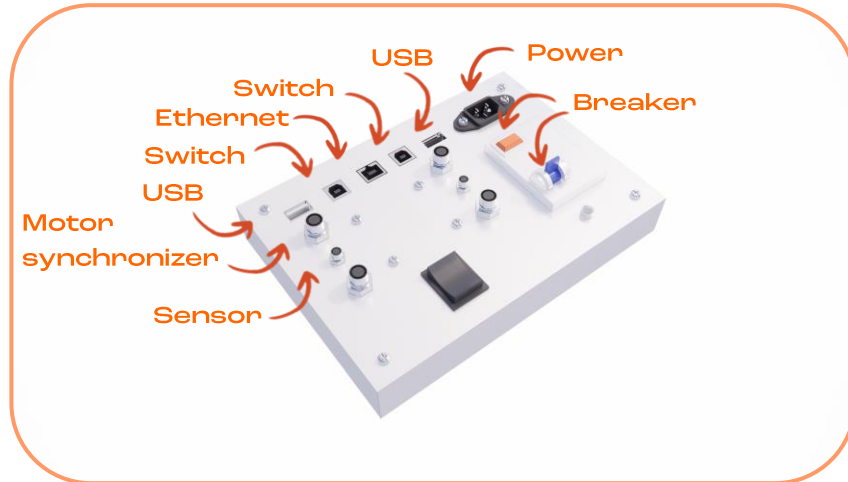


Insert the aligner piece and tighten the screws



Screw the bottom covers on the idler end

CONTROL BOX : INSTALLATION



Screw control box into access panel in beginning housing and then into wall



Note: Second access box is optional



Insert the control box



Connect all the wires and wait for the green light

Must Follow and Confirm Side A goes to Side A and Side B goes to side B
Make sure all connectors are in the correct place DO NOT FORCE THEM IN!

Note: If you wish to keep this unit in the wall, you must have a close junction box to run the line to



close the box and insert the screws

CONGRATULATIONS ON YOUR MASTERPIECE!

View with the partition raised



View with the partition lowered

